



IPS TFT LCD Capacitive Touchscreen 480x800 2 Lane MIPI DSI Interface

Basic Information

- Place of Origin: ShenZhen, China
- Brand Name: Chenghao/Oem
- Certification: ROHS ISO9001 CE
- Model Number: CH430WV15A-CTC
- Minimum Order Quantity: 100 pcs
- Price: /
- Packaging Details: All the products are packed in right way to keep it safe. For small sizes of products we use tray + carton, For bigger sizes we use foam slot + carton. we also design packages according to customers' requirements
- Delivery Time: 7-15 working days
- Payment Terms: T/T
- Supply Ability: 300Kpcs/month



Product Specification

- Product Name: IPS TFT LCD Capacitive Touchscreen
- Module Type: 4.3"TFT + CTP
- Display Mode: IPS / Transmissive / Normally Black
- Number Of Dots: 480*(RGB)*800
- Viewing Direction: ALL
- Module Size: 75.56(W)×154.37(H)×3.75(T) Mm
- Highlight: Capacitive Touchscreen 2 Lane,
400cd/m2 LCD Capacitive Touchscreen,
2 lane MIPI DSI Capacitive Touchscreen



Product Description

IPS TFT LCD Capacitive Touchscreen 480x800 2 Lane MIPI DSI Interface

1. Specification of wvga ips tft lcd

Feature		Specification	Unit
Display Specification		Chenghao	-
	Size	4.3	inch
	Resolution	480x3(RGB)x800	dots
	Pixel pitch	0.117(W)×0.117(H)	mm
	Display Mode	IPS/NB	-
	Viewing Direction	80808080	--
	Luminance	400	cd/m2
Mechanical Characteristics	LCM (W * H * D)	75.56(W)×154.37(H)×3.75(T)	mm
	Active Area (W * H)	56.16(W)×93.6(H)	mm
	With /Without TP	with	-
	LED Numbers	8-LED	pcs
	Operation temperature	-20~+70	°C
	Storage temperature	-30~+80	°C

2. Description of 480x800 ips tft lcd

ChengHao Display model CH430WV15A-CTC is a color active matrix thin film transistor (TFT) liquid crystal display (LCD) that uses amorphous silicon TFT as a switching device. This model is composed of a Customized capacitive touch panel, TFT LCD panel, a driving IC, a back-light and FPC.

This TFT LCD has a 4.3 (vertical screen) inch diagonally measured active display area with WVGA (480 horizontal by 800 vertical pixel) resolution.



The driver used for this project is the NT35510 and can display 16M colors by 24 bit R.G.B. signal input. The driver is mounted on the glass and the interconnection via FPC including components to drive the display module. Support 2 lane-MIPI DSI interface.

In addition, FPC can also be customized according to customer requirements, such as modifying back-light and CTP structure, interface definition, etc.

RoHS Compliance & Halogen Free.

Contact Us to get the Detailed Datasheet

[Please Click Here](#)

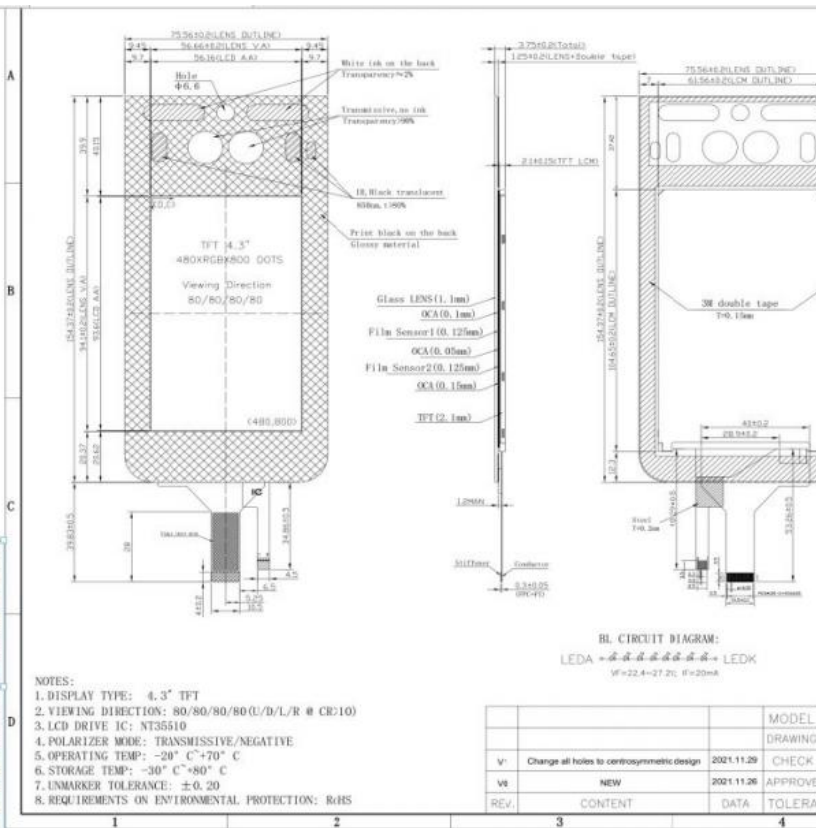
4. Quick Detail of 480x800 ips touchscreen

- * MODEL NO. :CH430WV15A-CTC
- * Module type:4.3" TFT+CTP
- * Display shape: vertical screen
- * Display Mode:IPS / Transmissive / Normally Black
- * Number of Dots:480*3(RGB)*800
- * Module size:75.56(W)×154.37(H)×3.75(T) mm
- * TFT Active area:56.16(W)×93.6(H) mm
- * TFT Interface:2 lane-MIPI DSI
- * CTP interface: I2C
- * CTP IC : GT911



- * Color : 16.7M
- * Contrast : 800
- * VIEWING DIRECTION: 80/80/80/80(U/D/L/R @ CR>10)
- * LCD DRIVE IC: NT35510
- * POLARIZER MODE: TRANSMISSIVE/NEGATIVE
- * OPERATING TEMP: -20°C~+70°C
- * STORAGE TEMP: -30°C~+80°C
- * UNMARKER TOLERANCE: ±0.20
- * REQUIREMENTS ON ENVIRONMENTAL PROTECTION: RoHS
- NEW
- * TFT FPC Number: 20 pin
- * CTP FPC Number: 8 pin
- * Back light Type : 8 White LED in serial
- * Life Time: 20000 Hr
- * BL CIRCUIT DIAGRAM:
VF=22.4~27.2 V , IF=20 mA
- * Luminance:400 cd/m2
- * Touch Panel Type: Capacitive

3. External Dimensions



5. Optical Characteristics

Optical Characteristics

The test of Optical specifications shall be measured in a dark room (ambient luminance 1lux and temperature = 25±2°C) with the equipment of Luminance meter system (Goniometer system and TOPCON BM-5) and test unit shall be located at an approximate distance 50cm from the LCD surface at a viewing angle of θ and Φ equal to 0. The center of the measuring spot on the Display surface shall stay fixed.

The backlight should be operating for 30 minutes prior to measurement.

Item	Symbol	Condition	Min.	Typ.	Max.	Unit
Viewing Angle	θ_L	C.R. 10	70	80	-	degree
	θ_R		70	80	-	
	θ_U		70	80	-	
	θ_D		70	80	-	
Contrast Ratio	-	T = 25°C	650	800	-	-
Transmittance	T%(with polarizer + D65 light)	T = 25°C	4.1	4.3	-	%
Response time	Tr	T = 25°C	35	40	ms	
	Tf					

Figure 1. The definition of Vth & Vsat

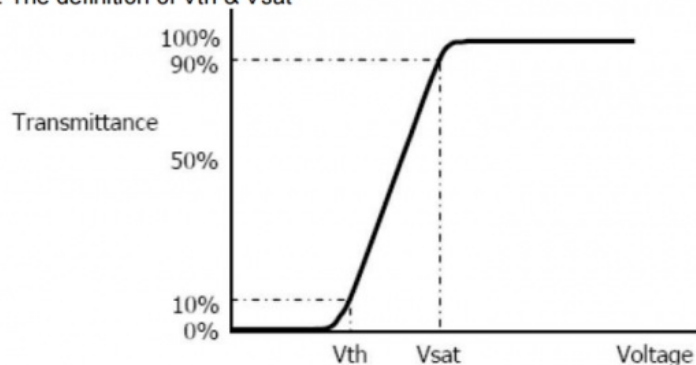
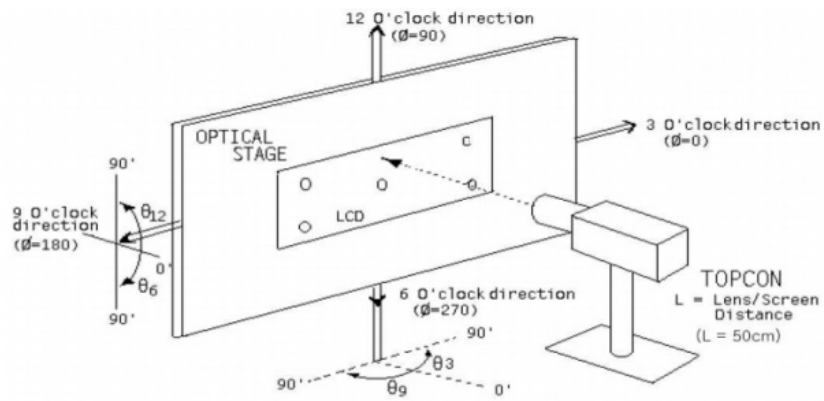


Figure 2. Measurement Set Up

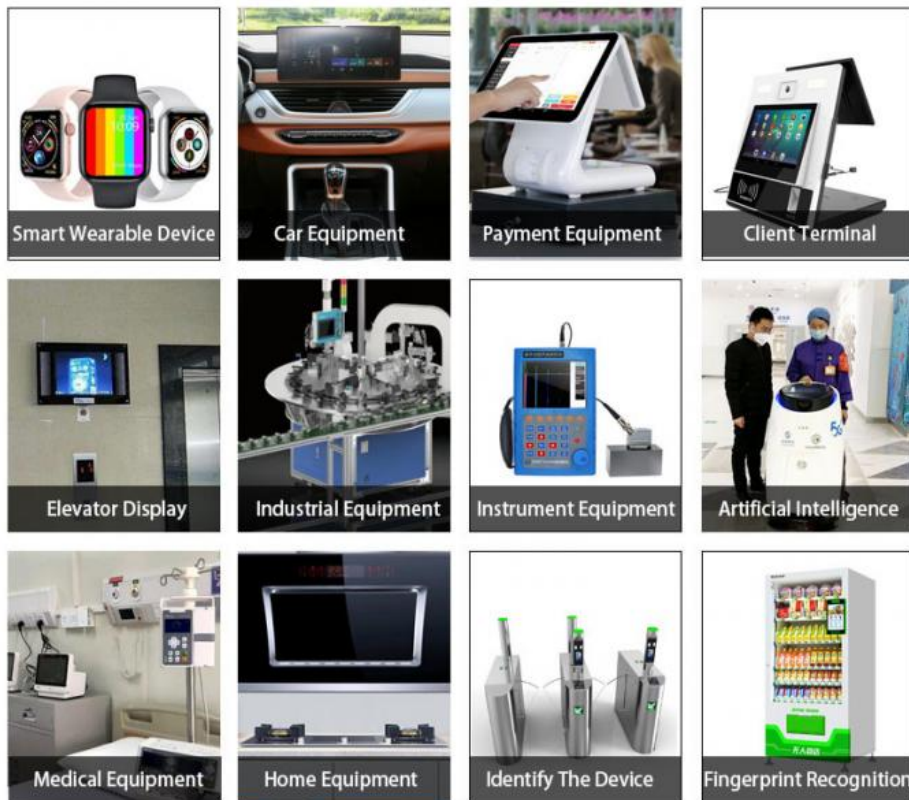


©All Rights Reserved

8/14

V0

5. Application of wvga ips touchscreen



Shenzhen ChengHao Optoelectronic Co., Ltd.

+86 755-27806536

add@chenghaolcm.com

chenghaolcd.com

7th floor, building C5, Hengfeng Industrial City, Hangcheng street, Bao'an District, Shenzhen