



800*480 TFT LCD Capacitive Touchscreen 7 Inch With 40 Pin Rgb Interface

Our Product Introduction

Basic Information

- Place of Origin: ShenZhen, China
- Brand Name: Chenghao/Oem
- Certification: ROHS ISO9001 CE
- Model Number: CH700WV03A-CTA
- Minimum Order Quantity: 100 pcs
- Price: /
- Packaging Details: All the products are packed in right way to keep it safe. For small sizes of products we use tray + carton, For bigger sizes we use foam slot + carton. we also design packages according to customers' requirements
- Delivery Time: 7-15 working days
- Payment Terms: T/T
- Supply Ability: 300Kpcs/month



Product Specification

- Product Name: 800*480 TFT LCD Capacitive Touchscreen
- Gray Scale Inversion Direction: 6 O'clock
- CTP Type: LENS Glass+ITO Glass+FPC+Adhesive
- Surface Treatment: 6H
- CTP Driver IC: GT911
- Module Size: 180(W)×119(H)×5.27(T)
- Highlight: 280 cd/m2 Tft Lcd Touch Screen,
7.0 inch TFT LCD Capacitive Touchscreen,
Lcd Tft Touchscreen 800x480



More Images

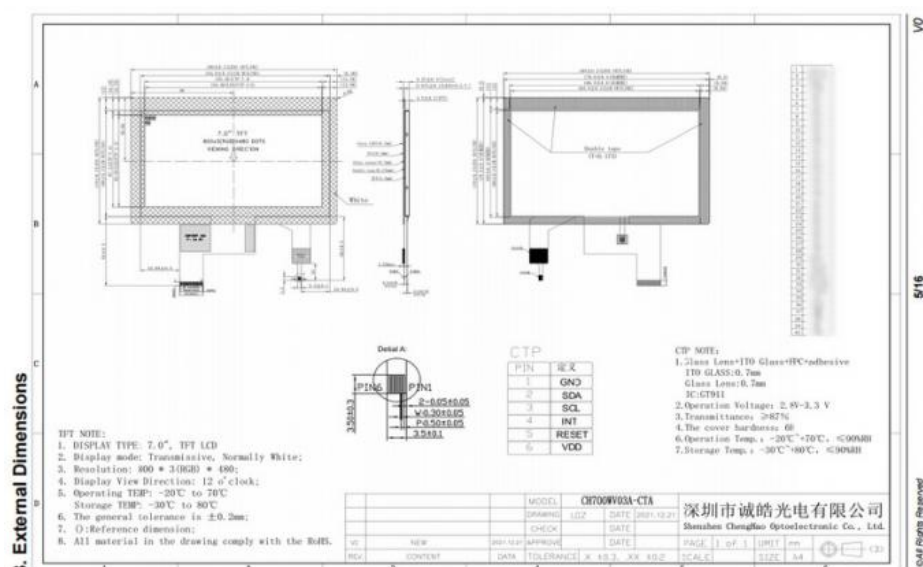


800*480 TFT LCD Capacitive Touchscreen 7 Inch With 40 Pin Rgb Interface

General Features			
Diagonal Size	7.0 inch	Type	LCM , TFT-LCD
Pixel Format	800(RGB)×480	Configuration	RGB Vertical Stripe
Active Area	154.08(W)×85.92(H) mm	Outline Dim.	180(W)×119(H)×527(T) mm
Luminance	280 cd/m ² (Typ.)	Contrast Ratio	500:1 (Typ.) (TM)
Viewing Angle	12:00	Operating Mode	TN, Normally White, Transmissive

ChengHao Display model CH700WV03A-CTA is a capacitive touch LCD module with a display area measuring 7.0 inch diagonally and a resolution of 800x3(RGB)x480 resolution.

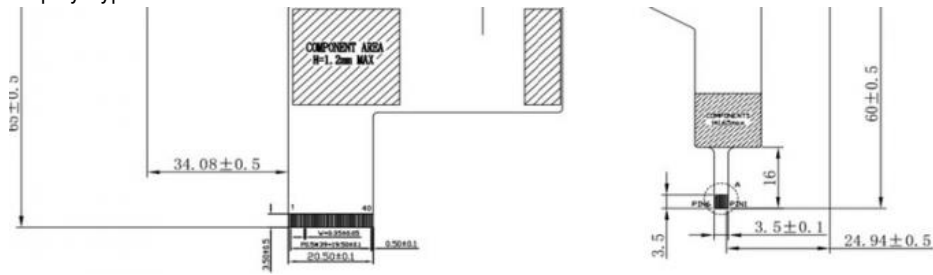
The 7inch capacitive touchscreen lcd includes a touch panel (TP), control IC, back light (BL), tft lcd panel and FPC and other components, of which TP, BL, FPC can be customized according to customer requirements, please consult our customer service.



[Please Click Here](#)

Diagonal Display Size: 7.0 inch
Interface Type: 24-Bit Parallel Digital RGB Interface
Resolution: 800 x 480 pixels
Touch Screen: Yes
Viewing Area Dimensions: 155.28*87.12*5.27 mm
Touch Screen Type: Capacitive
Backlight Type: white LED
Display Mode: Tn / Transmissive
Dimensions: 180(W)×119(H)×5.27(T) mm
Display Matrix Technology: TFT
Minimum Operating Temperature: -20°C
Maximum Operating Temperature: +70°C
Brightness: 280 cd/m²
Number of Colours: 16.7 Million
Standards Met: CE, RoHS Compliant

Operating Temperature Range: -20 → +70°C
 Contrast Ratio:500
 Display Type: LCD TFT



5. Application of 7 inch tft lcd

* Products are widely used in general communications, household appliances, industrial control, medical equipment, POS machines, instrumentation, GPS navigation, digital photo frames, netbooks, financial electronics, communication electronics, consumer electronics, information appliances, culture, education, sports and entertainment and other fields .

* Such as smart wearable devices (such as watches, fingertip pulse meters), car display devices (car central control display, navigation display/headrest display, etc.), payment financial equipment (card reader, cash register, etc.), customer terminal equipment (refrigerator, Coffee machine, smart rice cooker, etc.), elevator display equipment (elevator digital display), industrial control equipment (industrial display), instrument measuring equipment (detector, monitor), artificial intelligence equipment (smart robot), medical equipment (heart rate monitoring display) , smart home equipment (kitchen smoke machine), security identification equipment (smart access control, punch card machine, etc.), vending equipment (vending machine), etc.



Shenzhen ChengHao Optoelectronic Co., Ltd.



+86 755-27806536



add@chenghaolcm.com



chenghaolcd.com

7th floor, building C5, Hengfeng Industrial City, Hangcheng street, Bao'an District, Shenzhen