



Wide Temperature 4.3 IPS LCD Display 480x800 WVGA Color Screen Module With MIPI Interface

Our Product Introduction

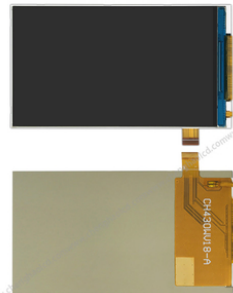
Basic Information

- Place of Origin: ShenZhen, China
- Brand Name: Chenghao/Oem
- Certification: ROHS ISO9001 CE
- Model Number: CH430WV18A
- Minimum Order Quantity: 100 pcs
- Price: /
- Packaging Details: All the products are packed in right way to keep it safe. For small sizes of products we use tray + carton, For bigger sizes we use foam slot + carton. we also design packages according to customers' requirements
- Delivery Time: 7-15 working days
- Payment Terms: T/T
- Supply Ability: 300Kpcs/month



Product Specification

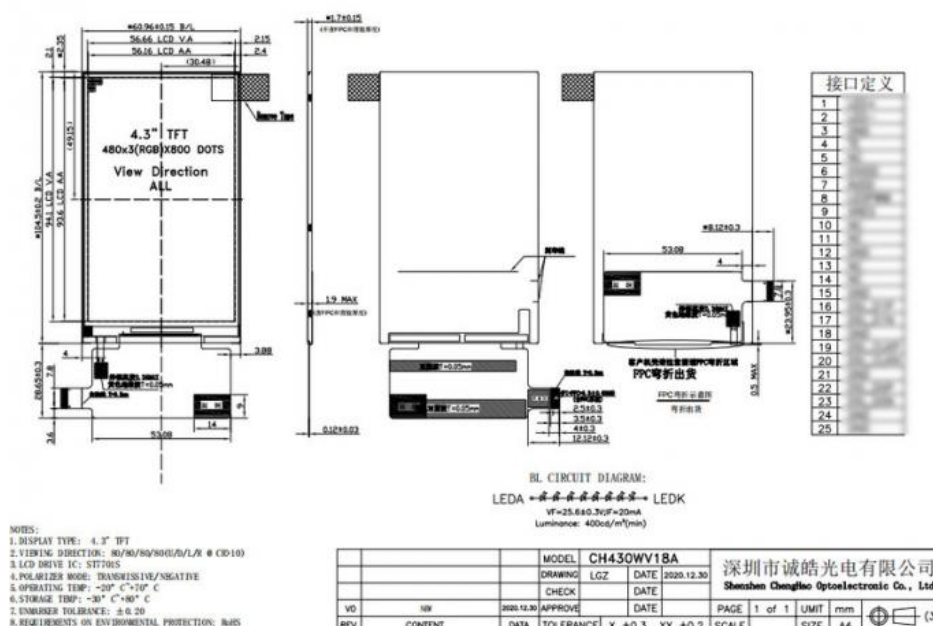
- Product Name: Wide Temperature 4.3 IPS LCD Display
- Module Size: 4.3 Inch
- Resolution: 480x800 Dots
- Tft Interface: MIPI
- Back Light: 400 Cd/m2
- Display Mode: Transmissive
- Highlight: Wide Temperature IPS LCD Display ,
IPS LCD Display 480x800 dots ,
MIPI Interface IPS LCD Display



Wide Temperature 4.3 IPS LCD Display 480x800 WVGA Color Screen Module With MIPI Interface

Model no	CH430WV18A
Size	4.3 inch
Active Area	56.16*93.6 mm
Panel Type	IPS Panel
Backlight	LED
Backlight Life	20,000 hrs
Resolution	480x800
Aspect Ratio	0.6
Contrast	800
Brightness	400 cd/m
Viewing Angle (H/V)	80/80/80/80
Display Color	16M

- * Wide Temperature 4.3 IPS LCD Display 480x800 WVGA Color Screen Module With MIPI Interface
- * The 4.3 Ips Tft Display is composed of a TFT LCD panel, driver IC, FPC, backlight.
- * The 4.3 Ips Tft Display is 480*800 resolution(vertical screen) TFT LCD module.
- * The 4.3 Ips Tft Display supports customization services, including touch function, back light, fpc shape structure, interface definition, etc.
- * The 4.3 Ips Tft Display is a wide temperature display that can work in a complex environment between -20~+70°C.
- * Backlight with different brightness options from 200 - 1500cd/m2 are available.
- * RoHS & REACH compliant.
- * If you can't find a suitable one, contact us to get a recommendation.



Contact Us to get the Detailed Datasheet

[Please Click Here](#)

Diagonal Display Size:4.3in
Interface Type:MIPI Interface
Resolution: 480x800 pixels
Touch Screen: No
Viewing Area Dimensions:56.66x94.1 mm
Backlight Type: LED
Display Mode: Transmissive
Dimensions: 60.96(W)*104.5(H)*1.7(T)mm
Display Matrix Technology: TFT
Minimum Operating Temperature: -20°C
Maximum Operating Temperature: +70°C
Brightness: 400 cd/m²

Number of Colours: 16.7 Million
Standards Met: CE, RoHS Compliant
Response Time: ***** ms
Operating Temperature Range: -20 → +70°C
Contrast Ratio:800
Display Type: LCD TFT



5. Application of wvga ips lcd display

Telecommunication Devices
Telephone, interphone, watch, tablet PC, radio, etc
Consumer Products
Camera, DVD player, toy, Cell Phone, game player, etc
Technical Equipment
Elevator controller, Industrial machine, etc
Office Automation
Printer, scanner, attendance machine, fax machine, etc
Home Appliances
Air-condition display, refrigerator, electric cooker, video doorbell, etc
Automobile
GPS, video player, speedometer, audio broadcast, etc
IT Products
Camera, handheld digital video, projector, media play, tablet PC, etc
Medical Equipment
Ultrasound machine, therapeutic equipment Blood pressure meter, etc



6. FAQ

Q:How long is the warranty period?

A:Generally the warranty period is one year. It depends on different products.

Q:What is the Product MOQ?

A:Different product has the different MOQ, please contact us sales for detailed information.

Q: What's your after-sale service?

A: If any problems, you will get our reply within 24 hours. Solution will be offered instantly by our professional technical team.

Q:Can you provide OEM service?

A:yes, we can provide both OEM and ODM service,can customize products according to the drawings you supply

Q: How can I trust your product quality?

A:The company has advanced the incoming inspection, on-line test and reliability test equipment and system, the company products through the ROHS,CE testing



Shenzhen ChengHao Optoelectronic Co., Ltd.



+86 755-27806536



add@chenghaolcm.com



chenghaolcd.com

7th floor, building C5, Hengfeng Industrial City, Hangcheng street, Bao'an District, Shenzhen