



## 480x800 TFT LCD Display 4.3 Inch All Viewing Direction With ST7701 IC

### Our Product Introduction

#### Basic Information

- Place of Origin: ShenZhen, China
- Brand Name: Chenghao/Oem
- Certification: ROHS ISO9001 CE
- Model Number: CH430WV18A
- Minimum Order Quantity: 100 pcs
- Price: /
- Packaging Details: All the products are packed in right way to keep it safe. For small sizes of products we use tray + carton, For bigger sizes we use foam slot + carton. we also design packages according to customers' requirements
- Delivery Time: 7-15 working days
- Payment Terms: T/T
- Supply Ability: 300Kpcs/month



#### Product Specification

- Product Name: 480x800 TFT LCD Display
- Module Type: 4.3" TFT
- Display Mode: IPS / Transmissive / Normally Black
- Number Of Dots: 480\*3(RGB)\*800
- Viewing Direction: ALL
- Luminance: 400cd/m2
- Highlight: CH430WV18A TFT LCD Display, LCD Display Panel With ST7701 IC, 4.3" TFT Lcd display panel



#### More Images



## Product Description

### 480x800 TFT LCD Display 4.3 Inch All Viewing Direction With ST7701 IC

#### 1. Specification of 4.3 wide temp tft lcd

MODEL NO.	CH430WV18A
Module type	4.3"TFT
Display Mode	IPS / Transmissive / Normally Black
Number of Dots	480*3(RGB)*800
Viewing Direction	ALL
Module size	60.96(W)*104.5(H)*1.7(T)mm
TFT Active area	56.16(W)*93.6(H)mm
Interface	MIPI
Luminance	400cd/m2

#### 2. Description of 480x800 wide temp tft lcd

Chenghao Display model CH430WV18A is an LCD panel mounted on a small display. It has a color display area with a diagonal measurement of 4.3 inches and can display 480\*3(RGB)\*800 resolution video images. The 4.3 inch mipi tft lcd module uses ips-tft full viewing angle display technology and has an ultra-wide viewing angle, which can improve the user's outdoor viewing experience.

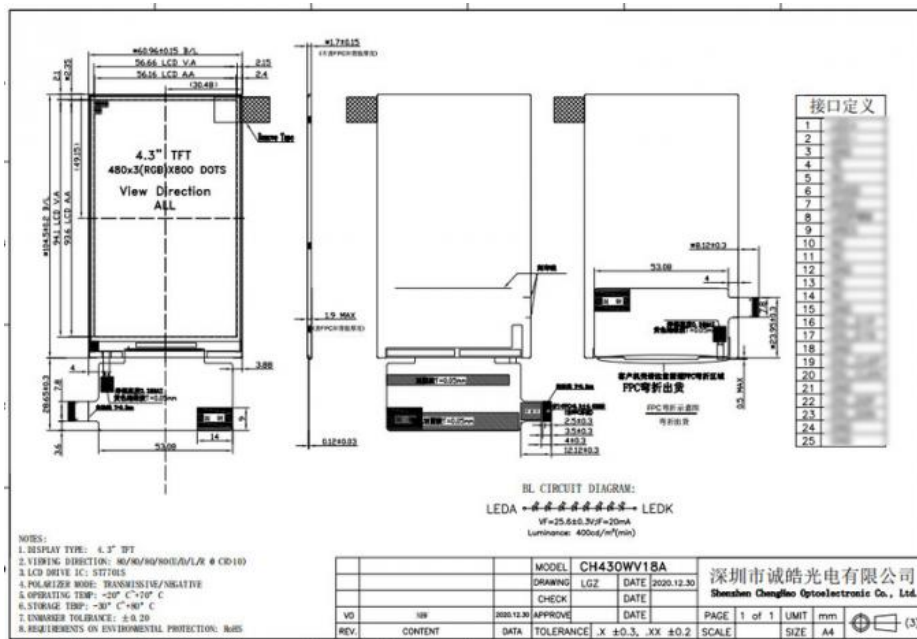
ST7701 is used as driver IC for 480x800 ips tft display, which is fixed on glass panel. By inputting RGB display signal, ST7701 can drive tft lcd display to display 16M colors.

In addition, the 4.3 mipi lcd module can be customized according to customer requirements, and the customized content includes Back light, FPC, touch function, etc.

Comply with CE and RoSH standards.

#### 3. Quick detail of mipi wide temp tft lcd

- \* MODEL NO. : CH430WV18A
  - \* Module type: 4.3"TFT
  - \* Display shape: vertical screen/horizontal screen/square screen/round screen
  - \* Display Mode: IPS / Transmissive / Normally Black
  - \* Number of Dots: 480\*3(RGB)\*800
  - \* Module size: 60.96(W)\*104.5(H)\*1.7(T)mm
  - \* TFT Active area: 56.16(W)\*93.6(H)mm
  - \* TFT Interface: MIPI
  - \* Color : 16.7M
  - \* Contrast : 800
  - \* VIEWING DIRECTION: 80/80/80/80(U/D/L/R @ CR>10)
  - \* LCD DRIVE IC: ST7701S
  - \* POLARIZER MODE: TRANSMISSIVE/NEGATIVE
  - \* OPERATING TEMP: -20°C~+70°C
  - \* STORAGE TEMP: -30°C~+80°C
  - \* UNMARKER TOLERANCE: ±0.20
  - \* REQUIREMENTS ON ENVIRONMENTAL PROTECTION: RoHS
- NEW
- \* FPC Number : 25pin
  - \* Back light Type: White LED
  - \* Life Time: 20000 Hr
  - \* BL CIRCUIT DIAGRAM:  
VF=25.6±0.3 V , IF=20 mA
  - \* Luminance: 400cd/m2



#### 4. Application of



#### 5. FAQ

Q: Can you provide OEM service?

A: yes, we can provide both OEM and ODM service, can customize products according to the drawings you supply.

Q: How can I trust your product quality?

A: We have more than 10 years experience in touch screen industry. From material purchasing to product delivery, we have own professional staff and procedures to prevent potential quality risk. Our products have been approved by ROHS.

Q: What's your after-sale service?

A: If any problems, you will get our reply within 24 hours. Solution will be offered instantly by our professional and strong technical team.

Q: What is the minimum order?

A: our company mainly deals with wholesale deals, but if you insist buying one set, welcome to take a sample for you check quality and function.

once sample is confirmed, we could allow for a small amount of orders (no quantity limitation) to be put into production and once this is confirmed, MOQ is required.

Q: How long is the warranty time for your products?

A:Normally 1 year warranty without damaged by people actions like misuse.It depends on different products.



**Shenzhen ChengHao Optoelectronic Co., Ltd.**



+86 755-27806536



add@chenghaolcm.com



chenghaolcd.com

7th floor, building C5, Hengfeng Industrial City, Hangcheng street, Bao'an District, Shenzhen