



480*800 Spi Lcd Module 4.3 Inch Ips Tft Display With Rgb Interface

Our Product Introduction

Basic Information

- Place of Origin: ShenZhen, China
- Brand Name: Chenghao/Oem
- Certification: ROHS ISO9001 CE
- Model Number: CH430WV08A
- Minimum Order Quantity: 100 pcs
- Price: /
- Packaging Details: All the products are packed in right way to keep it safe. For small sizes of products we use tray + carton, For bigger sizes we use foam slot + carton. we also design packages according to customers' requirements
- Delivery Time: 7-15 working days
- Payment Terms: T/T
- Supply Ability: 300Kpcs/month



Product Specification

- Product Name: 480*800 Spi Lcd Module
- Module Type: 4.3"TFT
- Display Mode: IPS / Transmissive / Normally Black
- Number Of Dots: 480*3(RGB)*800
- Viewing Direction: ALL
- Module Size: 61.56(W)*104.65(H)*2.2(T)mm
- Highlight: TFT LCD Display With Rgb Interface,
Spi Lcd Module 480x800,
400cd/m2 Spi Lcd Module



More Images



Product Description

480*800 Spi Lcd Module 4.3 Inch Ips Tft Display With Rgb Interface

1. Specification of ips tft lcd panel

Module number	CH430WV08A
Resolution	480x800 dots
Active Area	56.16(W)*93.6(H)mm
View angle	R/L/U/D 80/80/80/80(Deg)
Pixel Arrangement	RGB-stripe
Surface Treatment	Plant
Electrical Interface	Parallel RGB
Brightness	400(cd/m2)
Contrast ratio	800

2. Description of 4.3 ips tft lcd panel

Chenghao Display model CH430WV08A is a component of a small color display, which mainly includes a tft lcd panel, driver IC, backlight and FPC.

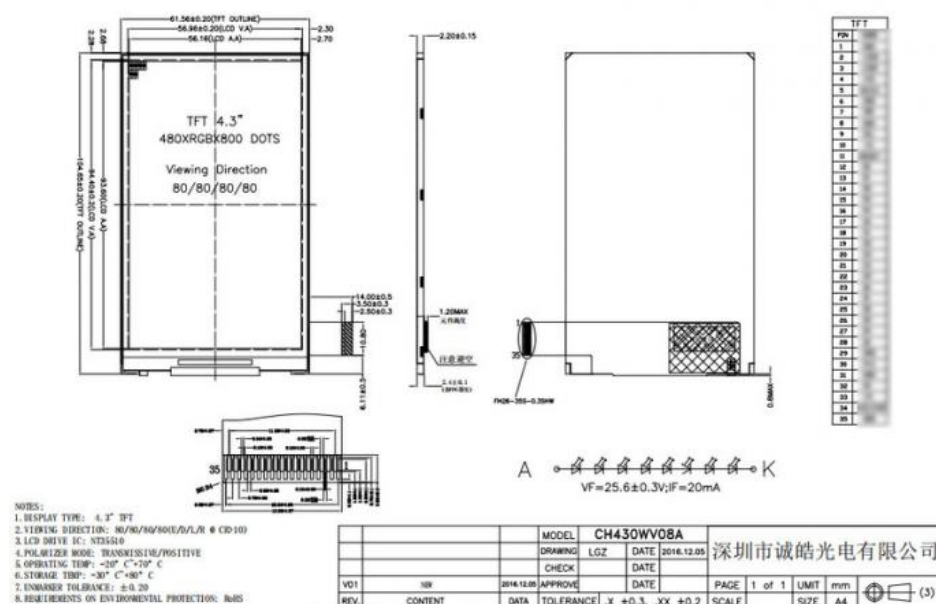
The tft lcd panel has a rectangular display area with a diagonal measurement of 4.3 inches, which can display 480*800 resolution video animations. Due to the use of ips full viewing angle display technology, the 4.3 ips screen display has an ultra-wide viewing angle.

In addition, as a supplier with rich experience in tft lcd production and sales, chenghao can provide OEM customization services for all tft lcd between 1.1~10.1 inch. The customization content of tft lcd module includes CTP/RTP installation or removal, BL modification, FPC design, interface definition, etc.

3. Drawings of 4.3inch ips tft lcd panel

Notes:

- (1) Display Type : 4.3" TFT
- (2) Viewing Direction : 80/80/80/80
- (4) Polarizer Mode : Transmission / Negative
- (5) Operating Temp : -20~70 °C
- (6) Storage Temp : -30~80 °C
- (7) Unmarker Tolerance: ± 0.20
- (8) Protection : ROHS



4. Quick Detail of 4.3" ips tft lcd panel

Model No:CH430WV08A

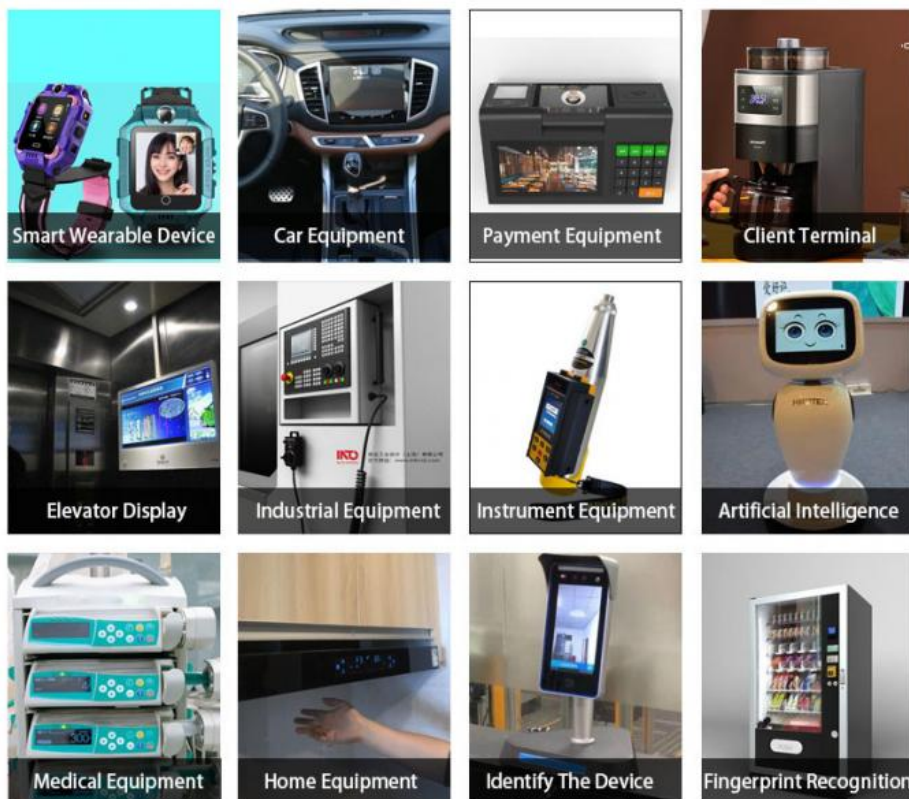
Size :4.3 inch

Active Area:56.16(W)*93.6(H) mm

Panel Type:IPS Panel

Backlight:LED
Backlight Life:20,000 hrs
Resolution:480x800
Aspect Ratio:0.6
Contrast:800
Brightness : 400 cd/m
Viewing Angle:80/80/80/80
Response Time:*****
Display Color:16.7 M
Operating Temperature:-20~70°C
Storage Temperature:-30~80°C
Touch:CTP,RTP (Optional)
Dimension (W*H*D):61.56(W)*104.65(H)*2.2(T)mm
Weight: TBG
Control IC:NT35510
Certificates:CE/ROHS

5. Application of 480x800 ips tft lcd panel



6. Our Service

- (1) Fully / Semi-automated production line ensure the best quality.
- (2) Custom Design,can specially meet your needs.
- (3) Fast Delivery ,about 20 days for lead time
- (4) Samples available on request; Small MOQ orders can be negotiated.
- (5) Provide best pre-sale and after-sale service to you.

7. FAQ

Q1: How does your factory do regarding quality control?

A1: Quality is the priority. We always attach great importance to quality controlling from the start to end. Our factory has gained ISO9001, RoHS, CE certification.

Q2: Can I get Customize product?

A2: For sure that OEM service is available.

Q3: Where is your factory located? How can I visit there?

A3: We have two factories, one is in Shenzhen, the other in HuNan Province. Welcome to visit our factory. We could pick you up in Shenzhen Bao'an Airport, or High-way Shenzhen North station.



Shenzhen ChengHao Optoelectronic Co., Ltd.



+86 755-27806536



add@chenghaolcm.com



chenghaolcd.com

7th floor, building C5, Hengfeng Industrial City, Hangcheng street, Bao'an District, Shenzhen