



## 480x800 Small Lcd Display Module 35 Pin FPC 4.3" WVGA Lcd Module Tft

### Our Product Introduction

#### Basic Information

- Place of Origin: ShenZhen, China
- Brand Name: Chenghao/Oem
- Certification: ROHS ISO9001 CE
- Model Number: CH430WV08A
- Minimum Order Quantity: 100 pcs
- Price: /
- Packaging Details: All the products are packed in right way to keep it safe. For small sizes of products we use tray + carton, For bigger sizes we use foam slot + carton. we also design packages according to customers' requirements
- Delivery Time: 7-15 working days
- Payment Terms: T/T
- Supply Ability: 300Kpcs/month



#### Product Specification

- Product Name: 480x800 Small Lcd Display Module
- Module Size: 4.3 Inch
- Display Mode: Transmissive
- Dot Arrangement: 480\*800
- Tft Interface: SPI/RGB
- Back Light: 400 Nits
- Highlight: 35 Pin FPC IPS LCD Display , 480x800 Lcd Module Tft, CH430WV08A Lcd Module



## Product Description

### 480x800 Small Lcd Display Module 4.3"35 Pin FPC Lcd Module Tft

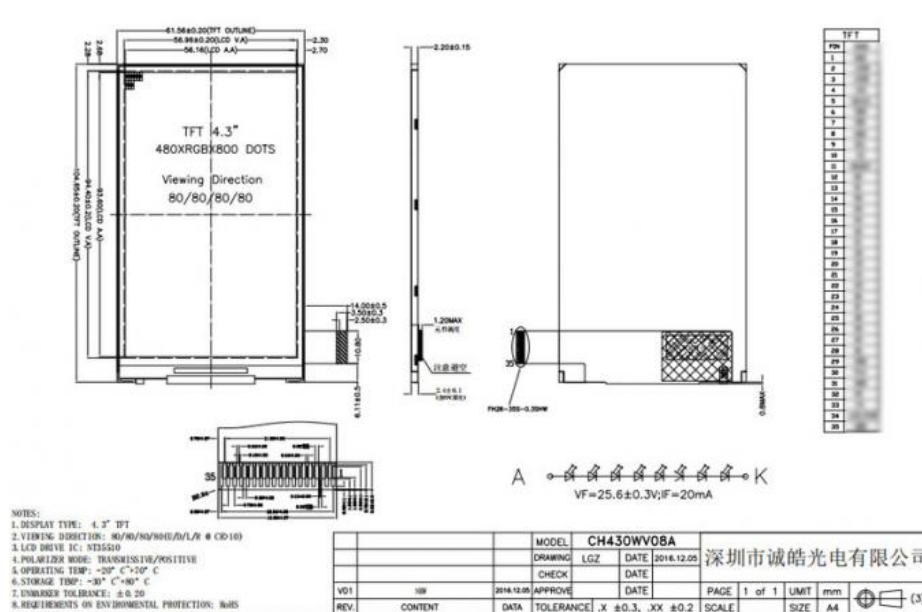
#### 1. Specification of 4.3 inch ips tft lcd

MODEL NO.	CH430WV08A
Module type	4.3" TFT
Display Mode	IPS / Transmissive / Normally Black
Number of Dots	480*3(RGB)*800
Viewing Direction	ALL
Module size	61.56(W)*104.65(H)*2.2(T)mm
TFT Active area	56.16(W)*93.6(H)mm
Interface	SPI+RGB
Luminance	400cd/m2

#### 2. Description of 4.3inch ips tft lcd

Chenghao Display model CH430WV08A is a 480\*800 resolution IPS TFT with one year warranty and supports OEM/ODM service. 480\*800 ips tft has a rectangular display area with a diagonal measurement of 4.3 inches, adopts IPS display technology, has 80/80/80/80 ultra-wide viewing angle, and supports SPI+RGB multi-interface.

In addition, 4.3 ips tft can also be modified and customized according to the customer's project, such as installing touch function, modifying the back light, designing the shape structure of the FPC, defining the interface, etc.



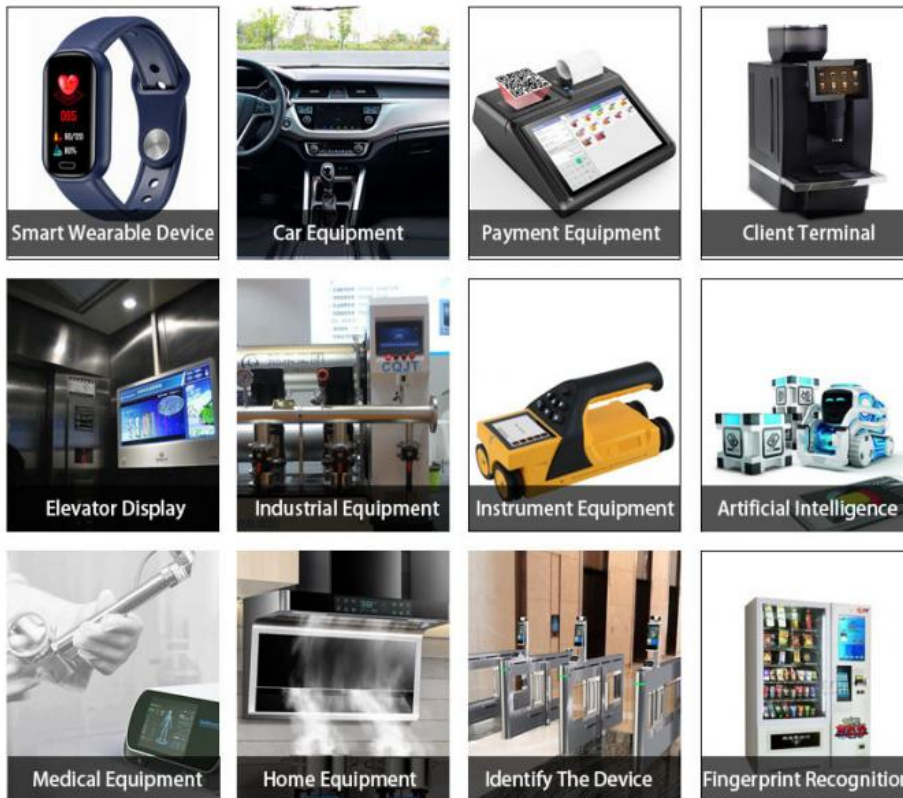
## Contact Us to get the Detailed Datasheet

[Please Click Here](#)

#### 4. Quick Detail of 4.3" ips tft lcd

- (1) DISPLAY TYPE: 4.3" TFT
- (2) VIEWING DIRECTION: 80/80/80/80(U/D/L/R @ CR>10)
- (3) LCD DRIVE IC: NT35510
- (4) POLARIZER MODE: TRANSMISSIVE/POSITIVE
- (5) OPERATING TEMP: -20°C~+70°C
- (6) STORAGE TEMP: -30°C~+80°C
- (7) UNMARKER TOLERANCE: ±0.20
- (8) REQUIREMENTS ON ENVIRONMENTAL PROTECTION: RoHS
- (9) Resolution: 480\*3(RGB)\*800 dots
- (10) Display Mode: IPS / Transmissive / Normally Black
- (11) Module Size: 61.56(W)\*104.65(H)\*2.2(T)mm
- (12) TFT Active area: 56.16(W)\*93.6(H)mm
- (13) Interface: SPI+RGB
- (14) Luminance: 400cd/m2
- (15) Operating Temperature: -20 ~ +70
- (16) Storage Temperature: -30 ~ +80
- (17) FPC Number: 35 Pin
- (18) Viewing Direction: ALL

#### 5. Application of ips tft lcd



## 6. FAQ

Q:Payment methods?

T/T, Paypal and Western union etc.

For samples: payment in advance.

For mass production: 50% deposit and 50% balance before shipment.

Q: What is the lead time of the products?

A:Samples in stock will be sent within 3 days after payment.

Two to Four weeks for mass production

Q:How long is the warranty period?

A:Generally the warranty period is one year. It depends on different products.

Q:What is the Product MOQ?

A:Different product has the different MOQ, please contact us sales for detailed information.

Q: What's your after-sale service?

A: If any problems, you will get our reply within 24 hours. Solution will be offered instantly by our professional technical team.

Q:Can you provide OEM service?

A:yes, we can provide both OEM and ODM service,can customize products according to the drawings you supply

Q: How can I trust your product quality?

A:The company has advanced the incoming inspection, on-line test and reliability test equipment and system, the company products through the ROHS,CE testing



**Shenzhen ChengHao Optoelectronic Co., Ltd.**



+86 755-27806536



add@chenghaolcm.com



chenghaolcd.com

7th floor, building C5, Hengfeng Industrial City, Hangcheng street, Bao'an District, Shenzhen