

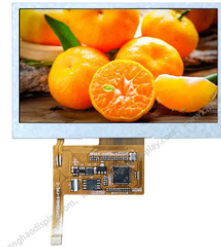


480*272 Dot Matrix Lcd Display Module 4.3inch SPI Screen With IPS All Viewing Angle

Our Product Introduction

Basic Information

- Place of Origin: ShenZhen, China
- Brand Name: Chenghao/Oem
- Certification: ROHS ISO9001 CE
- Model Number: CH430WQ16A
- Minimum Order Quantity: 100 pcs
- Price: /
- Packaging Details: All the products are packed in right way to keep it safe. For small sizes of products we use tray + carton, For bigger sizes we use foam slot + carton. we also design packages according to customers' requirements
- Delivery Time: 7-15 working days
- Payment Terms: T/T
- Supply Ability: 300Kpcs/month



Product Specification

- Product Name: 4.3inch SPI Screen
- Dot Arrangement: 480x272
- Size / Inch: 4.3 Inch
- Outline Dimension: 105.5(W)*67.2(H)*3.0(T)mm
- Backlight Type: White LED
- Viewing Angle: All
- Highlight: Lcd Display Module 480x272 Dot, REACH compliant S(T) Lcd Display, 480x272 4.3inch SPI Screen



Product Description

480*272 dot matrix lcd display module 4.3inch SPI Screen with IPS All Viewing Angle

1. Specification of 4.3 SPI Display

ITEM	STANDARD VALUES	UNITS
LCD type	4.3" TFT	--
Dot arrangement	480(RGB)× 272	dots
Module size	105.5(W)*67.2(H)*3.0(T)	mm
Active area	95.04(W)*53.856(H)	mm
Operating temperature	- 20 ~ + 70	°C
Storage temperature	- 30 ~ + 80	°C
Weight	TBD	g

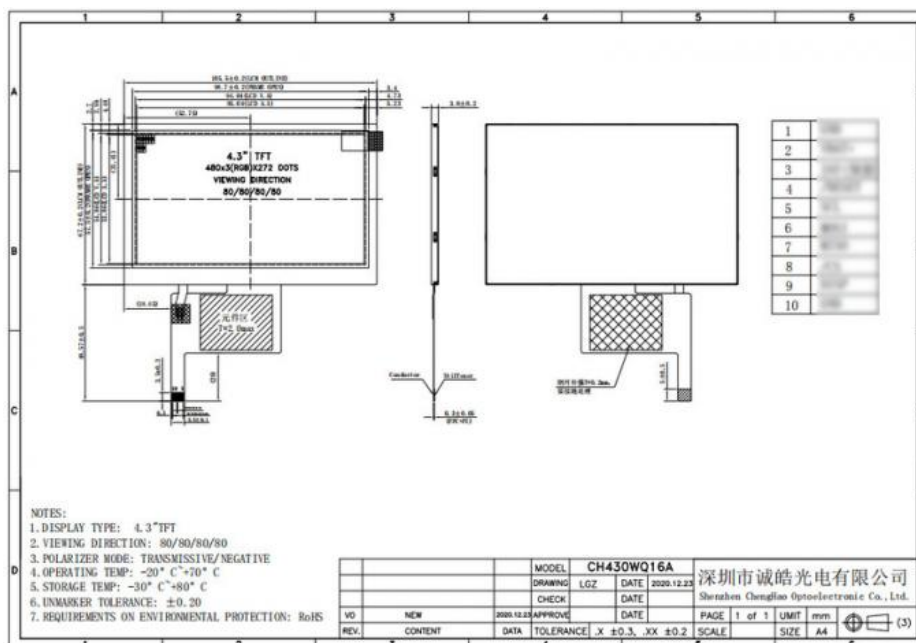
2. Description of 480x272 SPI Display

- * CH430WQ16A is a Transmissive type color active matrix liquid crystal display (LCD).
- * It is composed of a IPS TFT LCD panel, driver IC, FPC, backlight.
- * It is 480(RGB)x272 resolution TFT LCD module.
- * Backlight with different brightness options from 200 - 1500cd/m2 are available.
- * FPC can be customized, including shape structure, interface definition, etc.
- * The installation of a touch panel is supported.
- * Specific touch panel can be designed & customized.
- * RoHS & REACH compliant.
- * If you can't find a suitable one, contact us to get a recommendation.

3. Drawings of 4.3 SPI LCD module

Notes:

- (1) Display Type : 4.3 inch IPS TFT
- (2) Viewing Direction : ALL
- (3) Polarizer Mode : Transmissive / Negative
- (4) Operating Temp : -20~70 °C
- (5) Storage Temp : -30~80 °C
- (6) Unmarker Tolerance: ±0.20
- (7) Protection : ROHS



Contact Us to get the Detailed Datasheet

[Please Click Here](#)

4. Quick Detail of 480x272 spi LCD module

LCD type : 4.3" TFT
Dot arrangement : 480(RGB)*272 dots
Color filter array : RGB vertical stripe

Display mode : IPS/ Transmission/ Normally Black
Viewing Direction : 80/80/80/80
Module size : 105.5(W)*67.2(H)*3.0(T) mm
Active area: 95.04(W)*53.856(H)mm
Interface TFT : SPI
Operating temperature: -20 ~ +70 °C
Storage temperature: -30 ~ +80 °C
Back Light: White LED
FPC Number:10
Weight: TBD g

5. Application of 4.3 ips tft display module



6. FAQ

Q:Payment methods?

T/T, Paypal and Western union etc.

For samples: payment in advance.

For mass production: 50% deposit and 50% balance before shipment.

Q: What is the lead time of the products?

A:Samples in stock will be sent within 3 days after payment.

Two to Four weeks for mass production

Q:How long is the warranty period?

A:Generally the warranty period is one year. It depends on different products.

Q:What is the Product MOQ?

A:Different product has the different MOQ, please contact us sales for detailed information.

Q: What's your after-sale service?

A: If any problems, you will get our reply within 24 hours. Solution will be offered instantly by our professional technical team.

Q:Can you provide OEM service?

A:yes, we can provide both OEM and ODM service,can customize products according to the drawings you supply

Q: How can I trust your product quality?

A:The company has advanced the incoming inspection, on-line test and reliability test equipment and system, the company products through the ROHS,CE testing



Shenzhen ChengHao Optoelectronic Co., Ltd.



+86 755-27806536



add@chenghaolcm.com



chenghaolcd.com

