



480x272 Colour Lcd Module 4.3" Ips Tft Screen With 10 Pin FPC

Our Product Introduction

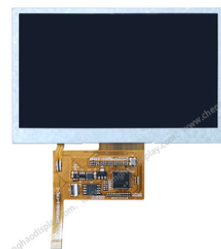
Basic Information

- Place of Origin: ShenZhen, China
- Brand Name: Chenghao/Oem
- Certification: ROHS ISO9001 CE
- Model Number: CH430WQ16A
- Minimum Order Quantity: 100 pcs
- Price: /
- Packaging Details: All the products are packed in right way to keep it safe. For small sizes of products we use tray + carton, For bigger sizes we use foam slot + carton. we also design packages according to customers' requirements
- Delivery Time: 7-15 working days
- Payment Terms: T/T
- Supply Ability: 300Kpcs/month



Product Specification

- Product Name: 480x272 Colour Lcd Module
- Interface: SPI
- Luminance: 300cd/m2
- Life Time: 20000 Hr
- Luminance: 300 Cd/m2
- FPC Number: 10 Pin
- Highlight: 4.3" Ips Tft LCD Screen,
480x272 Colour LCD Display Module,
LCD Display Module 300cd/m2



Product Description

480x272 Colour Lcd Module 4.3" Ips Tft Screen With 10 Pin FPC

1. Specification of tft lcd display module

Resolution	480 × 3(RGB) × 272
View angle	R/L/U/D 80/80/80/80(Deg)
Pixel Arrangement	RGB-stripe
Surface Treatment	Plant
Electrical Interface	SPI
Brightness	300(cd/m2)

2. Description of 4.3 tft lcd display module

ChengHao Display model CH430WQ16A is a color active matrix thin film transistor (TFT) liquid crystal display (LCD) that uses amorphous silicon TFT as a switching device. This model is composed of a IPS TFT LCD panel, a driving IC, a back light and FPC.

This TFT LCD has a 4.3 (Landscape screen) inch diagonally measured active display area with 480*3(RGB)*272 resolution. The driver can display 16M colors by 24 bit R.G.B. signal input. The driver is mounted on the glass and the interconnection via FPC including components to drive the display module. Support SPI interface.

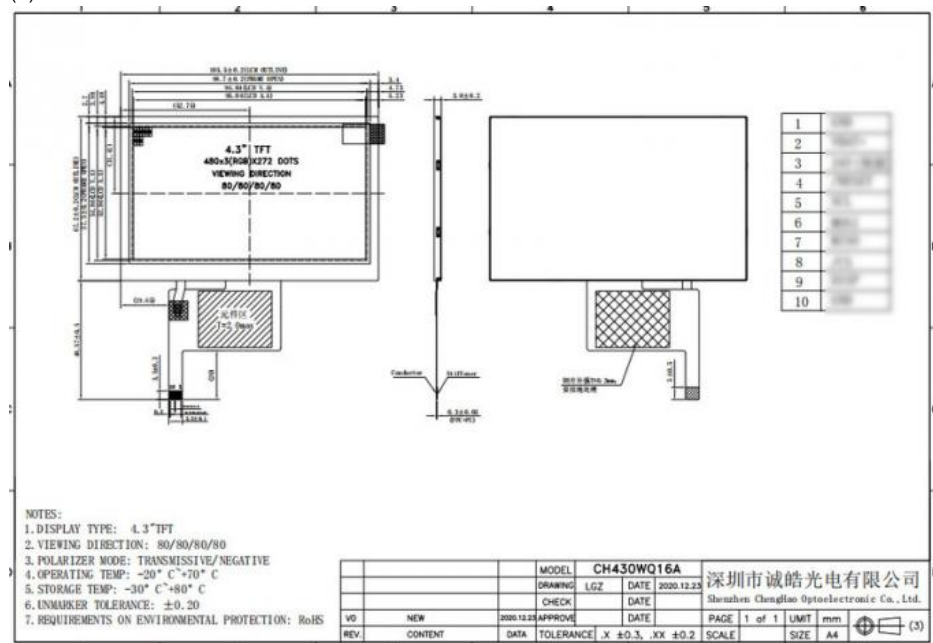
In addition, FPC can also be customized according to customer requirements, such as modifying back-light, interface definition, etc.

RoHS Compliance & Halogen Free.

3. Drawings of spi tft lcd display module

Notes:

- (1) Display Type : 4.3 inch ips tft
- (2) Viewing Direction : ALL
- (3) Polarizer Mode : Transmission / Negative
- (4) Operating Temp : -20~70 °C
- (5) Storage Temp : -30~80 °C
- (6) Unmarker Tolerance: ±0.20
- (7) Protection : ROHS



4. Application of 4.3 tft lcd screen module



5. Quick detail of 4.3 inch tft screen module

Diagonal Display Size: 4.3 inch
 Interface Type: SPI
 Resolution: 480(RGB)x272 pixels
 Touch Screen: No
 Backlight Type: LED
 Display Mode: IPS / Transmissive / Normall White
 Dimensions: 105.5(W)*67.2(H)*3.0(T)mm
 Display Matrix Technology: TFT
 Operating Temperature: -20°C ~ +70°C
 Brightness: 300 cd/m²
 Number of Colours:16M
 Standards Met: CE, RoHS Compliant
 Response Time: 10ms
 Contrast Ratio: 800
 Display Type: LCD TFT
 FPC Number: 10
 Life Time: 20000 Hr

6. FAQ

Q:Payment methods?
 T/T, Paypal and Western union etc.
 For samples: payment in advance.
 For mass production: 50% deposit and 50% balance before shipment.
 Q: What is the lead time of the products?
 A:Samples in stock will be sent within 3 days after payment.
 Two to Four weeks for mass production
 Q:How long is the warranty period?
 A:Generally the warranty period is one year. It depends on different products.
 Q:What is the Product MOQ?
 A:Different product has the different MOQ, please contact us sales for detailed information.
 Q: What's your after-sale service?
 A: If any problems, you will get our reply within 24 hours. Solution will be offered instantly by our professional technical team.
 Q:Can you provide OEM service?
 A:yes, we can provide both OEM and ODM service,can customize products according to the drawings you supply
 Q: How can I trust your product quality?
 A:The company has advanced the incoming inspection, on-line test and reliability test equipment and system, the company products through the ROHS,CE testing



Shenzhen ChengHao Optoelectronic Co., Ltd.



+86 755-27806536



add@chenghaolcm.com



chenghaolcd.com

7th floor, building C5, Hengfeng Industrial City, Hangcheng street, Bao'an District, Shenzhen