



1024x600 SPI Screen 10.1 Inch IPS LCD Display With Capacitive Touch Panel

Our Product Introduction

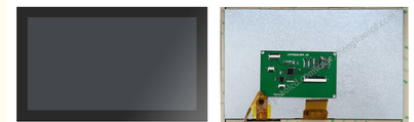
Basic Information

- Place of Origin: ShenZhen, China
- Brand Name: Chenghao/Oem
- Certification: ROHS ISO9001 CE
- Model Number: CH101WS07A-CT-PA
- Minimum Order Quantity: 100 pcs
- Price: /
- Packaging Details: All the products are packed in right way to keep it safe. For small sizes of products we use tray + carton, For bigger sizes we use foam slot + carton. we also design packages according to customers' requirements
- Delivery Time: 7-15 working days
- Payment Terms: T/T
- Supply Ability: 300Kpcs/month



Product Specification

- Product Name: 1024x600 SPI Screen
- Active Area: 222.72(W)×125.28(H) Mm
- LENS Viewing Area: 223.72(W)×126.28(H) Mm
- Dot Pitch: 0.2175(W)×0. 2088(H) Mm
- Interface: TFT SPI
- Operating Temperature: -20 ~ +70 °C
- Highlight: 10.1 Inch 1024x600 SPI Screen, IPS LCD Display 1024x600, ROHS standards IPS LCD Display



Product Description

1024x600 SPI Screen 10.1 Inch IPS LCD Display With Capacitive Touch Panel

1. Specification of 10.1 inch touch screen display

| | |
|---------------------|-------------------|
| Size | 10.1 |
| Display Type | TFT+CTP+PCB |
| Display model | CH101WS07A-CT-PA |
| Pixel Configuration | RGB Stripe |
| Display Resolution | 1024(RGB)x600 |
| Aspect Ration | 0.6 |
| Contrast | 800:1 (Typ.) (TM) |

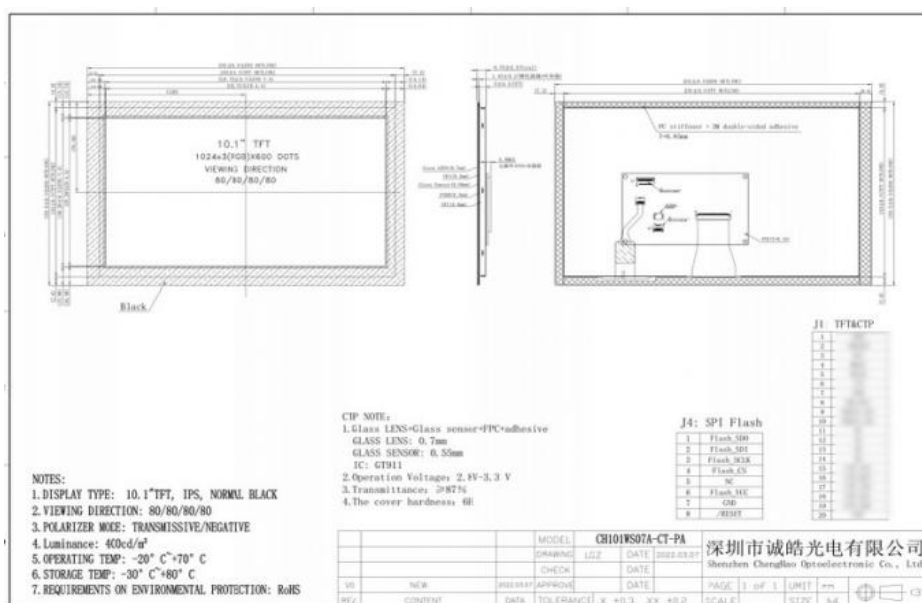
2. Description of 1024*600 touch screen display

- * CH101WS07A-CT-PA is a Transmissive type color active matrix liquid crystal display (LCD).
- * It is composed of a IPS TFT LCD panel, Capacitive Touch Panel, driver IC, FPC, back light.
- * 10.1-inch display area
- * It is 1024(RGB)x600 resolution TFT LCD module, HD display
 - * Back light Luminance is 400 cd/m2, supports different brightness options between 200 - 1500cd/m2.* RoHS & REACH compliant.
- * Using SPI Interface
- * Provide a rich sample program
- * Military-grade process standards, long-term stable work
- * Provide underlying driver technical support
- * Long term stable production and guaranteed supply
- * Specific touch panel can be designed & customized.
- * Compliant with CE/ROSH standards

3. Drawings of 10.1" TFT touch screen

Notes:

- (1) Display Type : 10.1 inch tft+CTP+PCB
- (2) Viewing Direction : 80/80/80/80
- (3) Polarizer Mode : Transmission / Negative
- (4) Operating Temp : -20~70 °C
- (5) Storage Temp : -30~80 °C
- (6) Unmarker Tolerance: ± 0.20
- (7) Protection : ROHS



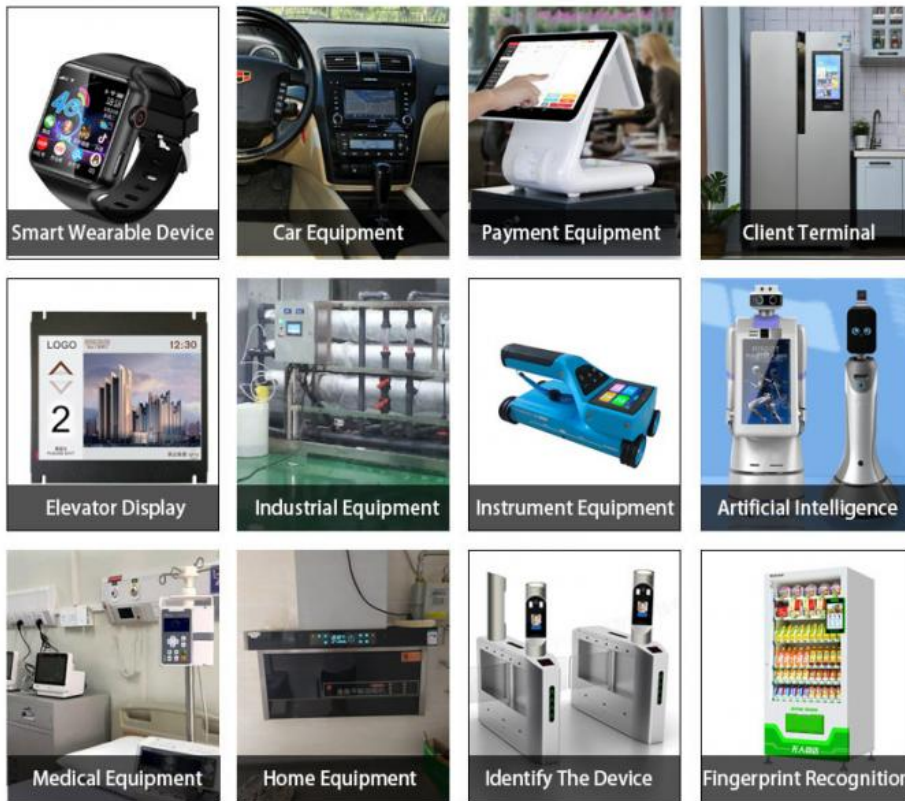
4. Absolute Maximum Ratings

| Item | Symbol | Min. | Max. | Unit |
|-----------------------|--------|------|---------|------|
| Analog Supply Voltage | VDD | -0.3 | 5 | V |
| Input Voltage | Vin | -0.3 | VDD+0.3 | V |
| Operating Temperature | TOP | -20 | 70 | °C |
| Storage Temperature | TST | -30 | 80 | °C |
| Storage Humidity | HD | 20 | 90 | %RH |

5. DC Characteristics

| Item | Symbol | Min. | Typ. | Max. | Unit | Remark |
|---------------------|-----------------|--------|------|--------|------|---------------------|
| Supply Voltage | VDD | 2.8 | 3.3 | 3.6 | V | - |
| Input High Voltage | V _{IH} | 0.7VDD | - | VDD | V | Digital input pins |
| Input Low Voltage | V _{IL} | GND | - | 0.3VDD | V | Digital input pins |
| Output High Voltage | V _{OH} | 0.8VDD | - | VDD | V | Digital output pins |
| Output Low Voltage | V _{OL} | GND | - | 0.2VDD | V | Digital output pins |
| I/O Leak Current | I _{LI} | -1 | - | 1 | uA | - |

6. Application



7. FAQ

Q1: Are you manufacturer ?

A: Yes, we are manufacturer.

Q2: How long is your delivery time?

A: Normally 3-5 working days after payment; Special requirement orders, delivery time is negotiable.

Q3: If the products can't work after receiving it, what should I do?

A: We will replace new items for you at once and then we make the judgement for the issue.

Q4: Do you accept OEM design?

A: Yes, we do. We can design according to your requirement, MOQ usually 100-1000.

Q5: Do you accept pay 30% in advance?

A: Yes, we do. We can start to prepare your goods when receive 30% payment, and send them after get the rest 70% payment.

Q6: What payment terms you accept?

A: We accept Paypal, T/T, Western Union, Wechat, Alipay, in Cash (RMB or USD).



Shenzhen ChengHao Optoelectronic Co., Ltd.



+86 755-27806536



add@chenghaolcm.com



chenghaolcd.com

7th floor, building C5, Hengfeng Industrial City, Hangcheng street, Bao'an District, Shenzhen