



7inch I2C Capacitive Touch Screen Module 7 Inch 800x480 TFT LCD Screen

Basic Information

- Place of Origin: ShenZhen, China
- Brand Name: Chenghao/Oem
- Certification: ROHS ISO9001 CE
- Model Number: CH700WV01B-CTB
- Minimum Order Quantity: 100 pcs
- Price: /
- Packaging Details: All the products are packed in right way to keep it safe. For small sizes of products we use tray + carton, For bigger sizes we use foam slot + carton. we also design packages according to customers' requirements
- Delivery Time: 7-15 working days
- Payment Terms: T/T
- Supply Ability: 300Kpcs/month



Product Specification

- Product Name: 7inch I2C Capacitive Touch Screen Display Module
- LCM Type: 7.0"TFT+CTP+PCB
- Dot Arrangement: 800×3(RGB)×480 Dots
- Module Size: 180(W)×119(H)×12(T) Mm
- Active Area: 154.08(W)×85.92(H) Mm
- Dot Pitch: 0.1926 (W)×0.1790 (H) Mm
- Highlight: 7 inch capacitive touch screen module , I2C capacitive touch screen module, Capacitive Touch TFT LCD Screen



Product Description

7inch I2C Capacitive Touch Screen Display Module 7 Inch 800*480 Tft Lcd Screen

1. Specification of 7 inch capacitive touch screen display

Module Name	CH700WV01B-CTB
Lcm Type:	7 inch TFT+CTP+PCB
Viewing Direction:	800×3(RGB)×480 dots
Interface	8/9/16/18/24-bit 8080 interface
Operating temperature:	30°C~80°C
Storage temperature:	30°C~80°C
TFT Driver IC:	SSD1963
CTP Driver IC	GT911
Brightness:	250 cd/m2

2. Description of 800x480 capacitive touchscreen module

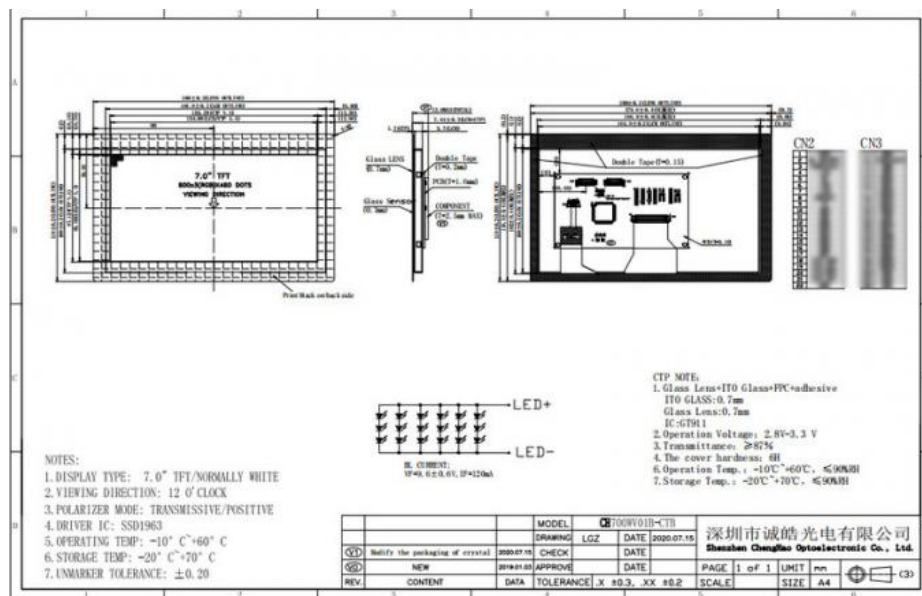
CH700WV01B-CTB is a touch screen display module customized by chenghao company according to customer requirements. It mainly includes a black glass cover, a capacitive touch panel (CTP), a Tn tft lcd panel, a driver IC, a Backlight (BL) and FPC etc.

- (1) The black glass cover is customized according to customer requirements and can be perfectly integrated into the customer's equipment;
- (2) The Capacitive Touch Panel uses GT911 as the CTP Driver IC to communicate with other components through the I2C interface. The CTP supports multi-touch.
- (3) The lcd panel has a 7.0 inch active display area with 800x480 dots Resolution;
- (4) The SSD1963 mounted on the glass is used as the driver IC of the tft lcd module, and is interconnected with other components through FPC. By inputting RGB signals to the driver IC, the display screen can display 16M colors;
- (5) FPC can also be customized according to customer requirements, such as modifying back-light and FPC structure, interface definition, etc.
- (6) CH700WV01B-CTB is a wide temperature display, which can work in the ultra-wide temperature of -20 ~ +70 °C; RoHS Compliance & Halogen Free.

3. Drawings of 7 inch capacitive touchscreen display

Notes:

- (1) Display Type : 7 inch TFT+CTP+PCB
- (2) Viewing Direction : 12 o'clock
- (3) Lcd Drive IC : SSD1963
- (4) Operating Temperature : -20 ~ 70 °C
- (5) Storage Temperature : -30 ~ 80 °C
- (6) Protection : ROHS



Contact Us to get the Detailed Datasheet

[Please Click Here](#)

4. Quick Detail of 7 inch tft lcd touchscreen display

- * LCD name: 7inch I2C Capacitive Touch Screen Display Module 7 Inch 800*480 Tft Lcd Screen
- * Part No.: CH700WV01B-CTB
- * Size.: 7.0 inch
- * With touch panel or not: Yes
- * Touch type: Capacitive touch panel
- * Display type: 7.0 inch TFT + CTP + PCB
- * Display colors: 16 M
- * Resolution (pixels): 800(RGB)x480
- * Viewing direction: 12 o'clock
- * Gray Scale Inversion Direction: 6 o'clock
- * TFT Controller IC: SSD1963
- * Display mode: Transmissive/ Normally white
- * Module size: 180(W)x119(H)x12(T) mm
- * Active Area: 154.08(W)x85.92(H) mm
- * Luminance: 250 cd/m²
- * Contrast: 500:1
- * Interface type: 8/9/16/18/24-bit 8080 interface
- * Pin NO.: 50 pins
- * Backlight type and color: LED backlight/white
- * LED Life span: 20000h
- * CTP type : G+G
- * Surface Treatment: 6H
- * CTP Driver IC: GT911
- * Operating temperature: -10 ~ +60 °C
- * Storage temperature: -20 ~ +70 °C

5. Application of 800x480 tft lcd touchscreen display





Shenzhen ChengHao Optoelectronic Co., Ltd.



+86 755-27806536



add@chenghaolcm.com



chenghaolcd.com

7th floor, building C5, Hengfeng Industrial City, Hangcheng street, Bao'an District, Shenzhen