



Mipi White IPS LCD Screen 4.5inch 480X854 Resolution Color Tft Display Module

Our Product Introduction

Basic Information

- Place of Origin: ShenZhen, China
- Brand Name: Chenghao/Oem
- Certification: ROHS ISO9001 CE
- Model Number: CH450FW02A
- Minimum Order Quantity: 100 pcs
- Price: /
- Packaging Details: All the products are packed in right way to keep it safe. For small sizes of products we use tray + carton, For bigger sizes we use foam slot + carton. we also design packages according to customers' requirements
- Delivery Time: 7-15 working days
- Payment Terms: T/T
- Supply Ability: 300Kpcs/month



Product Specification

- Product Name: MiPi White LED Mini LCD Screen
- LCD Type: 4.5" IPS TFT
- Dot Arrangement: 480x854
- Supplier: Chenghao
- Luminous Intensity For LCM: 450 Cd/m2
- Viewing Direction: 80 / 80 / 80 / 80
- Interface: MiPi
- Highlight: MiPi IPS LCD Screen ,
4.5inch Color Tft Display Module ,
480X854 Color Tft Display Module



Product Description

Mipi White LED Mini LCD Screen 4.5inch 480*854 Resolution Color Tft Display Module

1. Specification of 4.5 inch ips tft lcd module

Module number	CH450FW02A
Resolution	480*854 dots
Active Area	98.64*55.44 mm
View angle	80/80/80/80
Operating temperature	-20 ~ +70 °C
Surface Treatment	Plant
Electrical Interface	mipi

2. Description of 480x854 ips tft lcd module

CH450FW02A is an IPS color TFT LCD Module produced by chenghao company, which mainly includes an IPS TFT Lcd Panel, a driver IC, a backlight and an FPC.

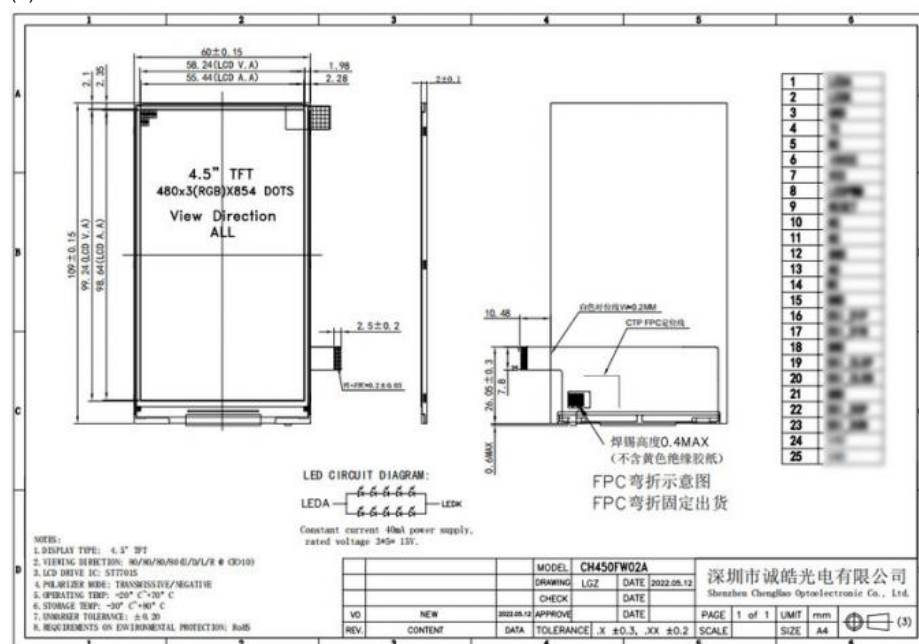
The TFT Lcd Panel has a 4.5 inch color display area with 480x3(RGB)x854 dots Resolution. The ST7701S mounted on the glass is used as the driver IC of this tft display module, and is interconnected with other components through the FPC. By inputting RGB signals to the driver IC, this tft lcd display can display 16M colors. In addition, FPC can also be customized according to customer requirements, such as modifying back-light and FPC structure, interface definition, etc.

RoHS Compliance & Halogen Free.

3. Drawings of 4.5 inch tft display module

Notes:

- (1) Display Type : 4.5" TFT
- (2) Viewing Direction : All Viewing Angle
- (3) Polarizer Mode : Transmissive / Negative
- (4) Operating Temp : -20~70 °C
- (5) Storage Temp : -30~80 °C
- (6) Unmarker Tolerance: ± 0.20
- (7) Protection : ROHS



Contact Us to get the Detailed Datasheet

[Please Click Here](#)

4. Quick Detail of 480x854 ips tft display module

- * LCD name: Mipi White LED Mini LCD Screen 4.5inch 480*854 Resolution Color Tft Display Module
- * Part No.: CH450FW02A
- * Size.: 4.5 inch
- * With touch panel or not: no
- * Support Touch type: CTP/RTP
- * Display type: 4.5 inch TFT

- * Display colors: 16.7M
- * Resolution (pixels): 480x854 dots
- * Viewing direction: 80/80/80/80
- * Display mode: IPS / Transmission / Normally Black
- * Module size: 109*60*2 mm
- * Active Area: 98.64*55.44 mm
- * Luminance: 450 cd/m2
- * Contrast: 800:1
- * Interface type: mipi
- * LED Life span: 20000h

5. Application of 4.5 inch ips tft display



6. Products Quality Assurance

- (1)High-quality raw material supplier :
after-sales guarantee and long-term stable supplier, LCD panel and Driver IC made of A-regulated raw materials.
- (2)Other materials:
such as polarizers, backlight film materials, etc. We also use brand new A-regulated raw materials
- (3)Strict quality control:
Through rate up to 98.5%,Customer online defect rate as low as 0.3%.
Inspection is done in FOG==>LCM==>LCM+RTP/CTP==> production online inspection ==>Q.C inspection==>aging test 4 hours with load in 60 °C special room (as option)==>OQC.
A product must pass 5 tests before shipment: incoming inspection, 100% online inspection, QC on-site inspection, aging test and OQC inspection, etc.

7. FAQ

- Q:Payment methods?
T/T, Paypal and Western union etc.
For samples: payment in advance.
For mass production: 50% deposit and 50% balance before shipment.
- Q: What is the lead time of the products?
A:Samples in stock will be sent within 3 days after payment.
Two to Four weeks for mass production
- Q:Can you provide OEM service?
A:yes, we can provide both OEM and ODM service,can customize products according to the drawings you supply
- Q: How can I trust your product quality?
A:The company has advanced the incoming inspection, on-line test and reliability test equipment and system, the company products through the ROHS,CE testing





+86 755-27806536



add@chenghaolcm.com



chenghaolcd.com

7th floor, building C5, Hengfeng Industrial City, Hangcheng street, Bao'an District, Shenzhen