



4.3 Inch Full HD IPS Display 8 Bit MPU Interface With SSD1963

Our Product Introduction

Basic Information

- Place of Origin: ShenZhen, China
- Brand Name: Chenghao/Oem
- Certification: ROHS ISO9001 CE
- Model Number: CH430WQ12E-PA
- Minimum Order Quantity: 100 pcs
- Price: /
- Packaging Details: All the products are packed in right way to keep it safe. For small sizes of products we use tray + carton, For bigger sizes we use foam slot + carton. we also design packages according to customers' requirements
- Delivery Time: 7-15 working days
- Payment Terms: T/T
- Supply Ability: 300Kpcs/month



Product Specification

- Product Name: 4.3 Inch Full Hd Ips Display
- LCD Type: 4.3" TFT+PCB
- Dot Arrangement: 480(RGB)×272 Dots
- Color Filter Array: RGB Vertical Stripe
- Display Mode: IPS / Transmission / Normally Black
- Viewing Direction: 80/80/80/80
- Highlight: 4.3 Inch Full Hd Ips Display, MPU Interface Full Hd Ips Display, SSD1963 full hd ips monitor



More Images



Product Description

4.3 Inch Full Hd Ips Display 8 Bit MPU Interface With SSD1963

1. Specification of 4.3 inch sunlight readable tft display

Module Name	CH430WQ12E-PA
Type:	4.3" TFT+PCB
Viewing Direction:	80/80/80/80
Connection type:	COG+FPC
Operating temperature:	30°C~80°C
Storage temperature:	30°C~80°C
Driver IC:	SSD1963
Interface type:	Digital 8080 series MPU 8bit/16bit
Brightness:	1000 nits

2. Description of 480x272 sunlight readable tft display

ChengHao Display model 430WQ12E-PA is a color active matrix thin film transistor (TFT) liquid crystal display (LCD) that uses amorphous silicon TFT as a switching device. This model is composed of a IPS TFT LCD panel, a driving IC, a back-light and FPC.

This TFT LCD has a 4.3" (horizontal screen) diagonally measured active display area with 480(RGB)x272 dot resolution. The driver can display 16M colors by R.G.B. signal input and is mounted on the glass and the interconnection via FPC including components to drive the display module.

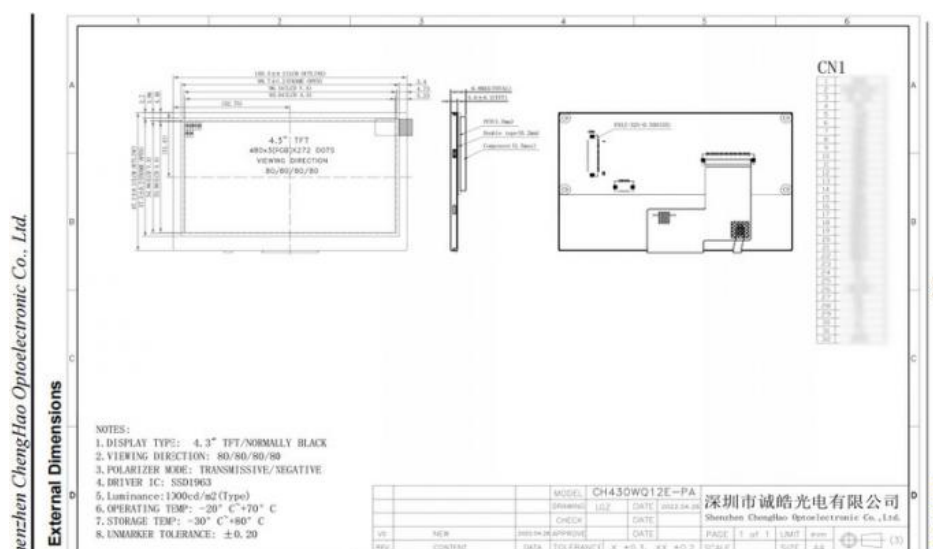
FPC can also be customized according to customer requirements, such as modifying back-light and FPC structure, interface definition, etc.

RoHS Compliance & Halogen Free.

3. Drawings of sunlight readable tft colors

Notes:

- (1) Display Type : 4.3 inch
- (2) Viewing Direction : 80/80/80/80
- (3) Lcd Drive IC : SSD1963
- (4) Operating Temperature : -20 ~ 70 °C
- (5) Storage Temperature : -30 ~ 80 °C
- (6) Protection : ROHS



Contact Us to get the Detailed Datasheet

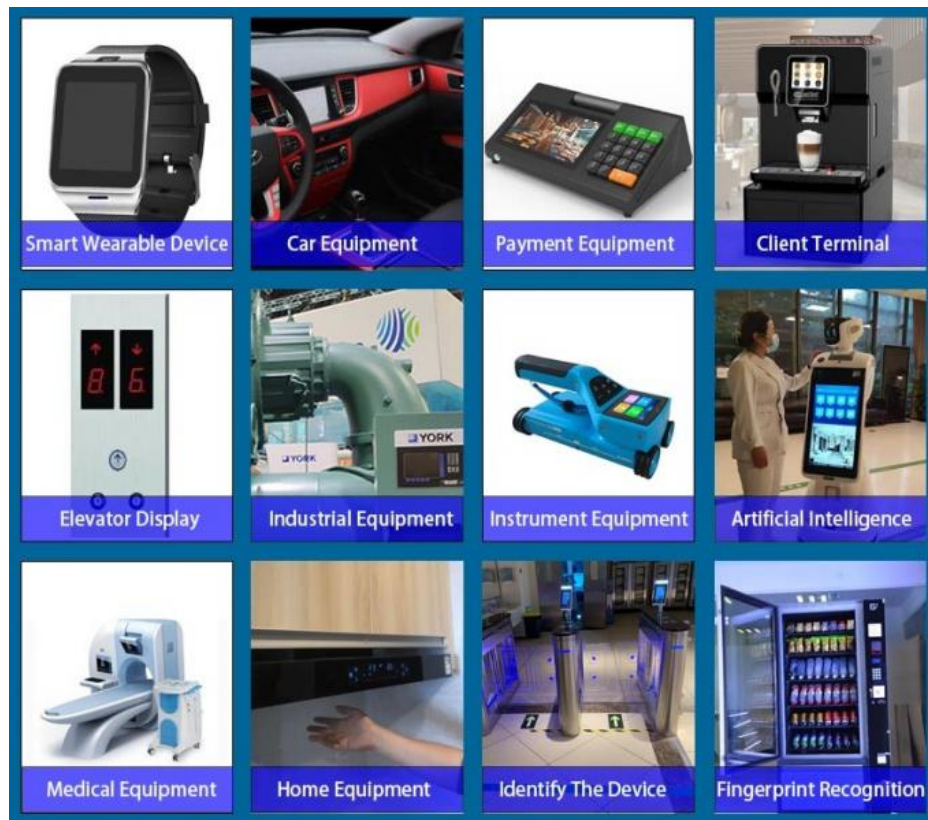
[Please Click Here](#)

4. Quick Detail of sunlight readable tft ips

- * LCD name: 4.3 Inch Full Hd Ips Display 8 Bit MPU Interface With SSD1963
- * Part No.: CH430WQ12E-PA
- * Size.: 4.3 inch
- * With touch panel or not: No

- * Support Touch type: capacitive / resistive touch panel
- * Display type: 4.3" TFT
- * Display colors: 16.7 M
- * Resolution (pixels): 480(RGB)x272
- * Pixel pitch: 0.198 (W)x0.198 (H) mm
- * Viewing direction: 80/80/80/80
- * Controller IC: SSD1963
- * Display mode: IPS / Transmission / Normally Black
- * Module size: 105.5(W)x67.2(H)x6.8(T) mm
- * Active Area: 95.04(W)x53.856(H) mm
- * Luminance: 1000 cd/m2
- * Contrast: 800:1
- * Interface type: Digital 8080 series MPU 8bit/16bit
- * Backlight type and color: white LED
- * LED Life span: 20000h

5. Application of sunlight readable tft lcd



6. FAQ

Q1: Do you used capacitive touch screen or resistive touch screen.

A: We have capacitive touch screen and resistive touch screen .

Q2: What is your sample policy?

A: If there is stock,you can sample at any time,if there is no stock,it will take some time,and then wait for the materials to come back to sample. But the customer needs to pay the sample fee and express fee.

Q3: How long is your lead time for mass production?

A: It takes about 20 - 45 working days for mass production,depending on the model and order quantity.

Q4: How to ensure long-term stable delivery?

A: First,we will recommend products that can be delivered for a long time to customers,and second,we will have a large number of stocks in advance for a long time.

Q5: What is your mode of payment for mass production?

A: Generally,after receiving 50%-100% deposit from customers,they begin to prepare materials. Delivery is about 5 working days after receipt of the final payment.

Q6: Will you inspect the goods before delivery?

A: Yes, we'll ship the goods after 100% inspection.



Shenzhen ChengHao Optoelectronic Co., Ltd.



+86 755-27806536



add@chenghaolcm.com



chenghaolcd.com

7th floor, building C5, Hengfeng Industrial City, Hangcheng street, Bao'an District, Shenzhen