



## ST7789V TFT SPI Display 240X320 2.4 Inch 18 Pin Capacitive Touchscreen

### Our Product Introduction

#### Basic Information

- Place of Origin: ShenZhen, China
- Brand Name: Chenghao/Oem
- Certification: ROHS ISO9001 CE
- Model Number: CH240QV58A-CT
- Minimum Order Quantity: 100 pcs
- Price: /
- Packaging Details: All the products are packed in right way to keep it safe. For small sizes of products we use tray + carton, For bigger sizes we use foam slot + carton. we also design packages according to customers' requirements
- Delivery Time: 7-15 working days
- Payment Terms: T/T
- Supply Ability: 300Kpcs/month



#### Product Specification

- Product Name: 2.4 Inch Tft Spi Display
- Viewing Direction: 6:00
- Storage Temperature: -30 ~ +80 °C
- Back Light: White LED In Parallel
- Weight: TBD
- REQUIREMENTS ON ENVIRONMENTAL PROTECTION: RoHS
- Highlight: ST7789V TFT SPI Display,  
2.4 Inch TFT SPI Display,  
Capacitive 2.4 inch touch screen



## Product Description

### 2.4 Inch Tft Spi Display 240\*320 18 Pin Capacitive Touchscreen For Medical Lcd Display

#### 1. Specification of 2.4 inch tft touchscreen

MODEL NO.	CH240QV58A-CT
Module type	2.4inch TFT+CTP
Display Mode	TN / Transmission / Normally White
Number of Dots	240*320
Gray Scale Inversion Direction	12 o'clock
Driver IC	ST7789V
TFT Active area	36.72(W)×48.96(H) mm
Interface	SPI

#### 2. Description of 240x320 tft touchscreen

chenghao is a tft lcd module manufacturer, providing OEM/ODM services for LCD users from all over the world. CH240QV58A-CT is a Tft Lcd Module with Capacitive Touch Panel customized for customers. It mainly includes white glass cover, capacitive touch panel, Tft lcd panel, driver IC, backlight and FPC.

(1) The white glass cover is customized according to customer requirements, and can be directly integrated with customer equipment.

(2) The Capacitive Touch Panel (CTP) uses the I2C interface and supports multi-touch.

(3) The Tft Lcd Panel has a 2.4 inch color display area with 240(RGB)\*320 Resolution.

(4) The Driver IC is mounted on the glass and communicates with other components through the FPC.

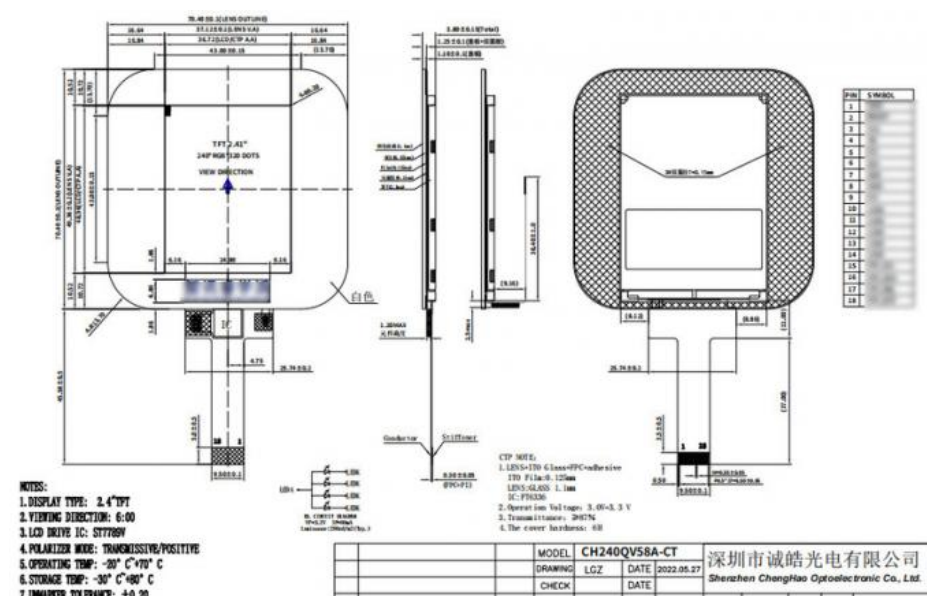
(5) The FPC can also be customized according to customer requirements, such as modifying back-light and FPC structure, interface definition, etc.

RoHS Compliance & Halogen Free.

#### 3. Drawings of 2.4 inch tft touch screen

Notes:

- (1) Display Type : TFT+CTP
- (2) Viewing Direction : 6:00
- (3) Polarizer Mode : Transmission/Positive
- (4) Operating Temp : -20~70 °C
- (5) Storage Temp : -30~80 °C
- (6) Unmarker Tolerance: ±0.20
- (7) Protection : ROHS



#### 4. Application of tft 2.4 display

# APPLICATION



## 5. Our Service

- (1) We are a factory-type supplier with ISO certification. Our products on sale have undergone strict quality inspection and testing before shipment, and have also passed CE/ROHS certification.
- (2) We have a professional after-sales service team, which can provide strong guarantee and logistical technical services for your orders.
- (3) Replacement within 30 days after the shipment of products from us due to products' problems.
- (4) We have long cooperation with many shipping companies and our export volume is large. The shipping companies can offer us good discounts.
- (5) All goods will be inspected and tested before shipment.

## 6. FAQ

Q1: How does your factory do regarding quality control?

A1: Quality is the priority. We always attach great importance to quality controlling from the start to end. Our factory has gained ISO9001, RoHS, CE certification.

Q2: Can I get Customize product?

A2: For sure that OEM service is available.

Q3: Where is your factory located? How can I visit there?

A3: We have two factories, one is in Shenzhen, the other in HuNan Province. Welcome to visit our factory. We could pick you up in Shenzhen Bao'an Airport, or High-way Shenzhen North station.



**Shenzhen ChengHao Optoelectronic Co., Ltd.**



+86 755-27806536



add@chenghaolcm.com



chenghaolcd.com

7th floor, building C5, Hengfeng Industrial City, Hangcheng street, Bao'an District, Shenzhen