



240x320 Small TFT LCD Display 2.4 Inch LCD TFT Touch Screen With RoHS

Our Product Introduction

Basic Information

- Place of Origin: ShenZhen, China
- Brand Name: Chenghao/Oem
- Certification: ROHS ISO9001 CE
- Model Number: CH240QV58A-CT
- Minimum Order Quantity: 100 pcs
- Price: /
- Packaging Details: All the products are packed in right way to keep it safe. For small sizes of products we use tray + carton, For bigger sizes we use foam slot + carton. we also design packages according to customers' requirements
- Delivery Time: 7-15 working days
- Payment Terms: T/T
- Supply Ability: 300Kpcs/month



Product Specification

- Product Name: 240x320 Small Tft Lcd Display
- Lcd Module Type: 2.4"TFT+CTP
- Display Mode: TN / Transmission / Normally White
- Resolution: 240x320 Dot
- Viewing Direction: 6 O'clock
- Interface: 4 Line 8bit SPI
- Storage Temp: -30°C~+80°C
- Highlight: 240x320 Small Tft Lcd Display,
Small Tft Lcd Display 2.4 Inch,
RoHS Lcd Tft Touch Screen



Product Description

240x320 Small Tft Lcd Display 2.4 Inch Lcd Tft Touch Screen With RoHS

1. Specification of 2.4 inch tft lcd touchscreen

Module number	CH240QV58A-CT
Resolution	240(RGB)x320 dots
Active Area	36.72×48.96 mm
View angle	6 o'clock
Pixel Arrangement	RGB-stripe
Surface Treatment	Plant
Electrical Interface	8 bit SPI

2. Description of 240x320 tft lcd touchscreen

CH240QV58A-CT is a Touch Screen Display Module customized by Chenghao Company for customers. It is a color active matrix thin film transistor (TFT) liquid crystal display (LCD) that uses amorphous silicon TFT as a switching device. This model is composed of a Tn TFT LCD panel, a white cover, a Capacitive Touch Panel (CTP), a driving IC, a back-light (BL) and FPC. The Tft Lcd Panel has a 2.4 inch (vertical screen) diagonally measured active display area with 240x320 dot resolution. The ST7789 mounted on glass is the driver IC of this module, which is interconnected with other components via FPC. By inputting the RGB model to the ST7789, this display can display 262K/65K colors.

The Back Light (BL) has 4 parallel white LEDs. By inputting the electrical signal of $V_F=3.2V/I_F=80\text{ mA}$, the lcd module will generate a luminance of 280 cd/m².

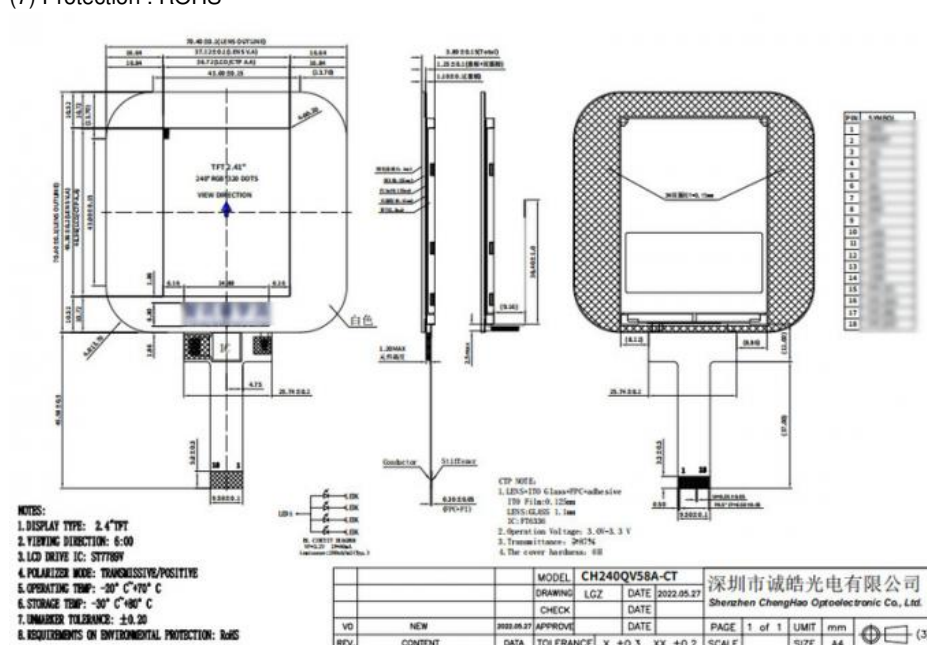
The FPC can also be customized according to customer requirements, such as modifying back-light and FPC structure, interface definition, etc.

RoHS Compliance & Halogen Free.

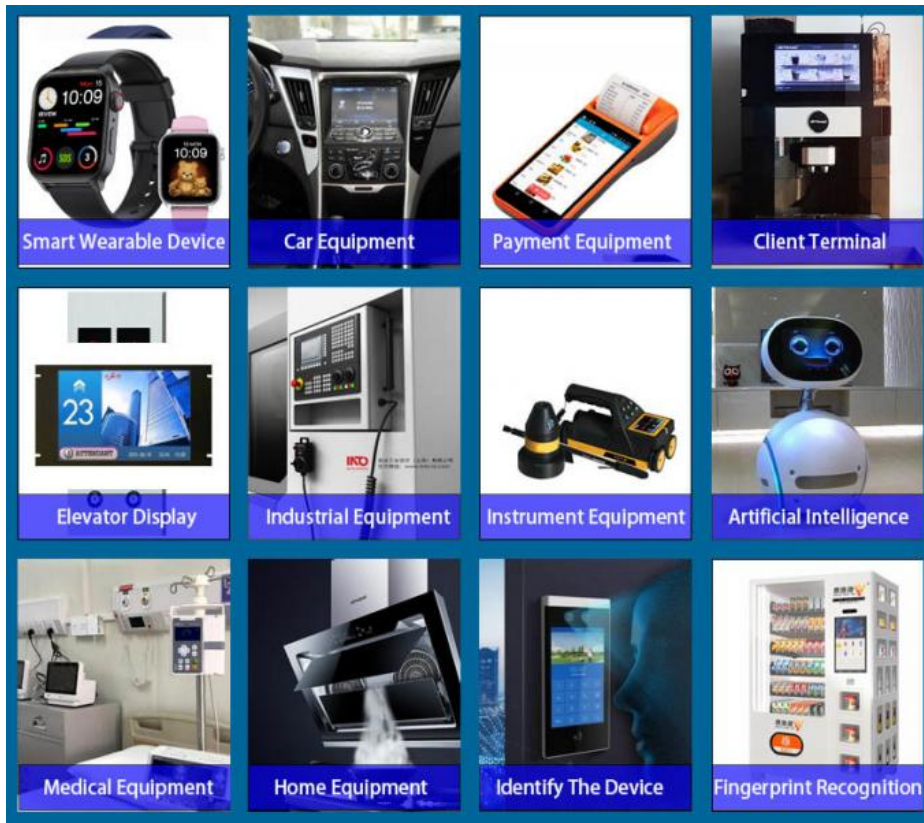
3. Drawings of 2.4 inch tft lcd touch screen

Notes:

- (1) Display Type : 2.4 inch TFT+CTP
- (2) Viewing Direction : 6 o'clock
- (3) Polarizer Mode : Transmission / Positive
- (4) Operating Temp : -20~70 °C
- (5) Storage Temp : -30~80 °C
- (6) Unmarker Tolerance: ± 0.20
- (7) Protection : ROHS



4. Application of 240x320 tft lcd touch screen



5. FAQ

Q1: Do you accept customization displays and touch screens?

A: Sure, you can customization the FPC, Backlight and the touch screen.

Q2: What type of interface is your display screen?

A: Small sized of displays generally support SPI, MCU, RGB, MIPI. Medium sized displays generally support LVDS, MIPI, EDP. Different specifications use different interfaces.

Q3: Do you used capacitive touch screen or resistive touch screen.

A: We have capacitive touch screen and resistive touch screen .

Q4: What is your sample policy?

A: If there is stock, you can sample at any time, if there is no stock, it will take some time, and then wait for the materials to come back to sample. But the customer needs to pay the sample fee and express fee.

Q5: How long is your lead time for mass production?

A: It takes about 20 - 45 working days for mass production, depending on the model and order quantity.

Q6: How to ensure long-term stable delivery?

A: First, we will recommend products that can be delivered for a long time to customers, and second, we will have a large number of stocks in advance for a long time.

Q7: What is your mode of payment for mass production?

A: Generally, after receiving 50%-100% deposit from customers, they begin to prepare materials. Delivery is about 5 working days after receipt of the final payment.



Shenzhen ChengHao Optoelectronic Co., Ltd.



+86 755-27806536



add@chenghaolcm.com



chenghaolcd.com

7th floor, building C5, Hengfeng Industrial City, Hangcheng street, Bao'an District, Shenzhen