



## 2.4" Industrial LCD Display TFT 240 X 320 Display 4 Line 8 Bit SPI Interface

### Basic Information

- Place of Origin: ShenZhen, China
- Brand Name: Chenghao/Oem
- Certification: ROHS ISO9001 CE
- Model Number: CH240QV58A
- Minimum Order Quantity: 100 pcs
- Price: /
- Packaging Details: All the products are packed in right way to keep it safe. For small sizes of products we use tray + carton, For bigger sizes we use foam slot + carton. we also design packages according to customers' requirements
- Delivery Time: 7-15 working days
- Payment Terms: T/T
- Supply Ability: 300Kpcs/month



### Product Specification

- Product Name: Tft 240 X 320 Display
- Viewing Direction: 6:00
- Storage Temperature: -30 ~ +80 °C
- Back Light: 4 White LED
- Weight: TBD
- REQUIREMENTS ON ENVIRONMENTAL PROTECTION: RoHS
- Highlight: 2.4" Industrial LCD Display,  
SPI Interface Industrial LCD Display,  
240 X 320 tft LCD Display



## Product Description

### 2.4" Industrial LCD Display Tft 240 X 320 Display 4 Line 8 Bit SPI Interface

#### 1. Specification of 2.4 inch tft lcd display module

MODEL NO.	CH240QV58A
Module type	2.4" TFT
Display Mode	TN / Transmission / Normally White
Number of Dots	240*320
Viewing Direction	6:00
Module size	42.72(W)×60.26(H)×2.3(T) mm
TFT Active area	36.72(W)×48.96(H) mm
Interface	4-line_8bit SPI

#### 2. Description of 2.4 inch tft display module

Chenghao is a tft lcd module supplier, specializing in providing OEM/ODM services for global LCD users. CH240QV58A is a color active matrix thin film transistor (TFT) liquid crystal display (LCD) produced by chenghao company that uses amorphous silicon TFT as a switching device. It consists of a TN TFT LCD Panel, a driver IC, a backlight and an FPC.

(1) The lcd panel has a 2.4" ( vertical screen ) diagonally measured active display area with 240\*320 dot resolution.

(2) The ST7789V installed on the glass is the driver IC of this display screen, which is interconnected with other components through FPC.

(3) Back Light (BL) has 4 White LED In Parallel, which provides 300 cd/m2 brightness to the display.

(4) FPC can also be customized according to customer requirements, such as modifying back-light and FPC structure, interface definition, etc.

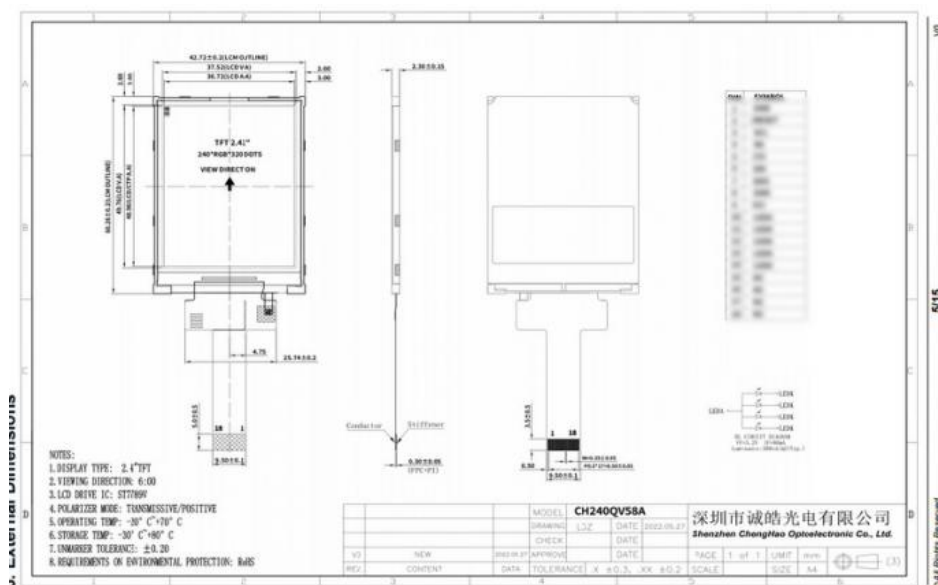
CH240QV58A is a wide temperature display, which can work in an ultra-wide temperature environment of -20 ~ +70 °C. In addition, if some parameters of this lcd display module do not meet your project requirements, we can arrange engineers to communicate with you technically and provide you with a suitable solution for you.

RoHS Compliance & Halogen Free.

#### 3. Drawings of 240x320 tft display module

Notes:

- (1) Display Type : 2.4-inch TFT
- (2) Viewing Direction : 6:00
- (3) Polarizer Mode : Transmission / Normally white
- (4) Operating Temp : -20~70 °C
- (5) Storage Temp : -30~80 °C
- (6) Unmarker Tolerance: ±0.20
- (7) Protection : ROHS



#### 4. Application of 2.4" tft display module

# Application



Consumer Electronics



Instrument Panel



HMI



Smart Home



Medical Equipment



Automotive Equipment

## 5. Our Service

### Shipping Policy:

- 1- Regularly, we shipped via Fedex/Dhl/UPS , express way (2-7 working days arrival), suitable for small order.
- 2- Sea shipping way, (25-40 days arrival), low cost, port to port, usually for large quantity order.

### Custom/OEM:

Custom service is ok.

### Sample Policy:

- 1- Usually we offer random sample for free but with your sample shipping freight charge paid.
- 2- We offer 1-2 pcs each sample randomly, if for more pcs, we will try send to you, if not and you must request more pcs, we will charge same sample fees for make more pcs samples to you.

### Easy order process:

Please kindly confirm us about product name, images, colors and quantity before you make the order .

## 6. FAQ

Q:Can you provide OEM service?

A:yes, we can provide both OEM and ODM service,can customize products according to the drawings you supply.

Q: How can I trust your product quality?

A:We have more than 10 years experience in touch screen industry. From material purchasing to product delivery, we have own professional staff and procedures to prevent potential quality risk. Our products have been approved by ROHS.

Q: What's your after-sale service?

A: If any problems, you will get our reply within 24 hours. Solution will be offered instantly by our professional and strong technical team.

Q:What is the minimum order?

A:our company mainly deals with wholesale deals,but if you insist buying one set,welcome to take a sample for you check quality and function.

once sample is confirmed, we could allow for a small mount of orders(no quantity limitation) to be put into production and once this is confirmed, MOQ is required.

Q:How long is the warranty time for your products?

A:Normally 1 year warranty without damaged by people actions like misuse.It depends on different products.



**Shenzhen ChengHao Optoelectronic Co., Ltd.**



+86 755-27806536



add@chenghaolcm.com



chenghaolcd.com

7th floor, building C5, Hengfeng Industrial City, Hangcheng street, Bao'an District, Shenzhen