



4 Line 8 Bit SPI Interface LCD Display Module 2.4 Inch 240X320 Dot

Basic Information

- Place of Origin: ShenZhen, China
- Brand Name: Chenghao/Oem
- Certification: ROHS ISO9001 CE
- Model Number: CH240QV58A
- Minimum Order Quantity: 100 pcs
- Price: /
- Packaging Details: All the products are packed in right way to keep it safe. For small sizes of products we use tray + carton, For bigger sizes we use foam slot + carton. we also design packages according to customers' requirements
- Delivery Time: 7-15 working days
- Payment Terms: T/T
- Supply Ability: 300Kpcs/month



Product Specification

- Product Name: 2.4inch LCD Display Module
- Dot Arrangement: 240(RGB)×320
- Color Pixel Arrangement: RGB Vertical Stripe
- Display Mode: TN / Transmission / Normally White
- Viewing Direction: 6 O'clock
- Interface: 4-line_8bit SPI
- Back Light: 4 White LED In Parallel
- Highlight: **LCD Display Module 2.4 Inch,
LCD Display Module 240X320 Dot,
color active matrix Tft LCD Display**



Product Description

2.4inch LCD Display Module 240*320 SPI 18 Pin Tft 2.4 Display

1. Specification of 2.4 inch lcd display

Module No.	CH240QV58A
LCD type	2.4" TFT
LCD Pixels	240*320 dots
Display mode	TN / Transmission / Normally White
Viewing Direction	6:00
Interface	SPI
Operating temperature	-20 ~ +70 °C
Storage temperature	-30 ~ +80 °C

2. Description of 2.4 inch lcd display module

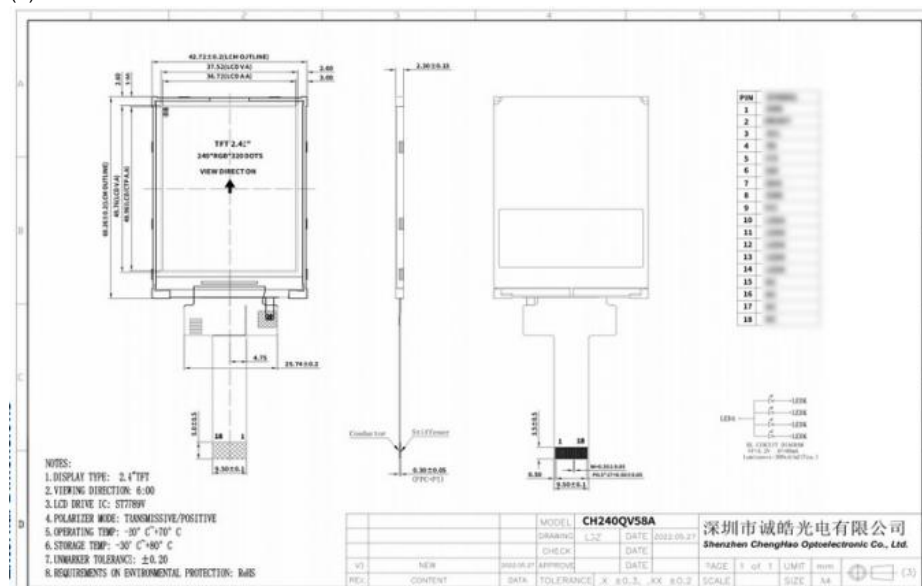
CH240QV58A is a standard model of tft lcd display from chenghao company, is a color active matrix thin film transistor (TFT) liquid crystal display (LCD) that uses amorphous silicon TFT as a switching device. It consists of a color tft lcd panel, a backlight, a Driver IC and FPC.

The tft lcd panel has a 2.4" (vertical screen) diagonally measured active display area with 240*320 dot resolution. The ST7789V mounted on glass is used as the control IC for this color lcd display module and communicates with other components via FPC For interconnection. By inputting RGB signals to ST7735s, this display can display 262k/65K colors. 4-line_8bit SPI interface is supported. In addition, FPC can also be customized according to customer requirements, such as modifying back-light and FPC structure, interface definition, etc.
RoHS Compliance & Halogen Free.

3. Drawings of 240x320 tft lcd screen

Notes:

- (1) Display Type : 2.4-inch TFT
- (2) Viewing Direction : ALL
- (4) Polarizer Mode : Transmission / Normally
- (5) Operating Temp : -20~70 °C
- (6) Storage Temp : -30~80 °C
- (7) Unmarker Tolerance: ± 0.20
- (8) Protection : ROHS



4. Quick Detail of 240x320 tft lcd panel

- * LCD name: 2.4inch LCD Display Module 240*320 SPI 18 Pin Tft 2.4 Display
- * Part No.:CH240QV58A
- * Size.: 2.4 inch
- * Support touch panel Type: CTP/RTP
- * Display type: 2.4" TFT
- * Display colors: 262K/65K
- * Resolution (pixels): 240(RGB)x320
- * Viewing direction: 6:00
- * Color Pixel Arrangement: RGB vertical stripe
- * Gray Scale Inversion Direction:12 o'clock
- * Driver IC :ST7789V

- * Display mode: TN / Transmission / Normally White
- * Module size: 42.72(W)×60.26(H)×2.3(T) mm
- * Active Area: 36.72(W)×48.96(H) mm
- * Dot pitch: 0.153 (W)×0.153 (H) mm
- * Luminance: 300 cd/m2
- * Contrast: 500:1
- * Interface type: 4-line_8bit SPI
- * Pin NO.: 18pin
- * Backlight : White LED
- * Operating temperature: -20 ~ +70
- * Storage temperature: -30 ~ +80℃

5. Our Service

1. We have a professional after-sales service team, which can provide strong guarantee and logistical technical services for your orders.
2. Replacement within 30 days after the shipment of products from us due to products' problems.
3. We have long cooperation with many shipping companies and our export volume is large. The shipping companies can offer us good discounts.
4. All goods will be inspected and tested before shipment.
5. Customer's satisfactory is most important to us. If you have any problem or questions regarding our transaction. Please contact us by Email. It will be responded within 24 hours.



Shenzhen ChengHao Optoelectronic Co., Ltd.



+86 755-27806536



add@chenghaolcm.com



chenghaolcd.com

7th floor, building C5, Hengfeng Industrial City, Hangcheng street, Bao'an District, Shenzhen