



## 1.1 Inch IPS LCD Display RGB 96x96 dots Resolution 4 Line SPI Interface

### Our Product Introduction

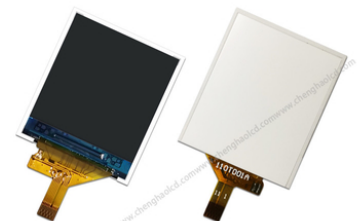
#### Basic Information

- Place of Origin: ShenZhen, China
- Brand Name: Chenghao/Oem
- Certification: ROHS ISO9001 CE
- Model Number: CH110T001A
- Minimum Order Quantity: 100 pcs
- Price: /
- Packaging Details: All the products are packed in right way to keep it safe. For small sizes of products we use tray + carton, For bigger sizes we use foam slot + carton. we also design packages according to customers' requirements
- Delivery Time: 7-15 working days
- Payment Terms: T/T
- Supply Ability: 300Kpcs/month



#### Product Specification

- Product Name: 1.1 Inch IPS LCD Display
- LCD Type: 1.1" TFT
- Dot Arrangement: 96(RGB)×96 Dots
- Color Filter Array: RGB Vertical Stripe
- Display Mode: IPS / Transmissive / Normally Black
- Viewing Direction: 80/80/80/80
- Highlight: 1.1 Inch IPS LCD Display ,  
SPI Interface IPS LCD Display ,  
RGB 96x96 LCD Display Module



## Product Description

### 1.1 Inch IPS LCD Display 96x96 Resolution 4line SPI Interface

#### 1. Specification of small lcd module

Module Name	CH110T001A
Type:	1.1 inch Tft
Viewing Direction:	80/80/80/80
Connection type:	COG+FPC
Operating temperature:	30°C~80°C
Storage temperature:	30°C~80°C
Driver IC:	ST7735S
Interface type:	4line SPI
Brightness:	200 cd/m2

#### 2. Description of Small lcd screen

ChengHao Display model CH110T001A is a color active matrix thin film transistor (TFT) liquid crystal display (LCD) that uses amorphous silicon TFT as a switching device. This model is composed of a IPS TFT LCD panel, a driving IC, a back-light and FPC.

This TFT LCD has a 1.1" ( vertical screen ) diagonally measured active display area with 96(RGB)x 96 dot resolution.

The driver can display 65K/262K colors by R.G.B. signal input and is mounted on the glass and the interconnection via FPC including components to drive the display module.

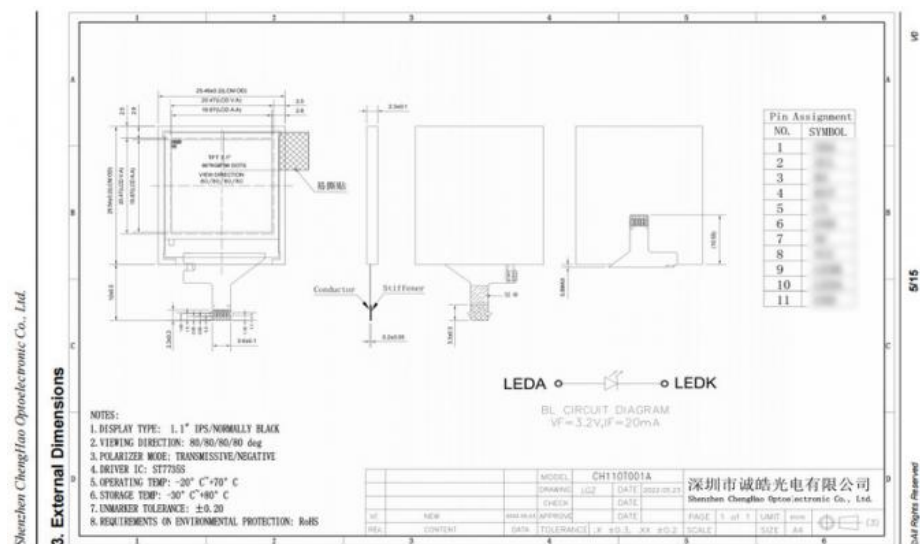
In addition, FPC can also be customized according to customer requirements, such as modifying back-light and FPC structure, interface definition, etc.

RoHS Compliance & Halogen Free.

#### 3. Drawings of TFT LCD Screen

Notes:

- (1) Display Type : 1.1inch TFT
- (2) Viewing Direction : 80/80/80/80
- (3) Lcd Drive IC : ST7735S
- (4) Operating Temperature : -20 ~ 70 °C
- (5) Storage Temperature : -30 ~ 80 °C
- (6) Protection : ROHS



## Contact Us to get the Detailed Datasheet

[Please Click Here](#)

#### 4. Quick Detail of TFT LCD Display

- \* LCD name: 1.1 Inch IPS LCD Display 96x96 Resolution 4line SPI Interface
- \* Part No.: CH110T001A
- \* Size.: 1.1 inch
- \* With touch panel or not: No
- \* Support Touch type: Capacitive/Resistive
- \* Display type: 1.1 inch TFT
- \* Display colors: 262K/65K
- \* Resolution (pixels): 96(RGB)\*96

- \* Pixel pitch: 0.207(W)×0.207(H) mm
- \* Viewing direction: 80/80/80/80
- \* Controller IC: ST7735S
- \* Display mode: Transmissive/ Normally Black
- \* Overall size: 25.46(W)×29.54(H)×2.3(T) mm
- \* Active Area: 19.87(W)×19.87(H) mm
- \* Luminance: 250 cd/m2
- \* Contrast: 800
- \* Interface type: 4 line SPI
- \* Pin NO.: 11 pins
- \* Backlight type and color: LED backlight/white
- Backlight: 1 LED parallel
- If=20mA, Vf =3.2V
- \* LED Life span: 20000h

#### 5. Application of Color Lcd Module



#### 6. General Clauses

MOQ:	1 pcs
Lead time:	Samples in stocks within 7 days, 3~6 weeks for mass production
Trade Terms :	EXW or FOB
Payment:	100% Paypal or T/T or Western union in advance for samples
Warranty:	12 months
Package:	Plastic Tray+Anti-Static Foam+Paper Card+Vacuum Bag+Carton



**Shenzhen ChengHao Optoelectronic Co., Ltd.**



+86 755-27806536



add@chenghaolcm.com



chenghaolcd.com

7th floor, building C5, Hengfeng Industrial City, Hangcheng street, Bao'an District, Shenzhen