

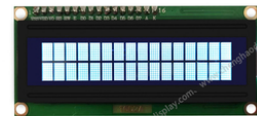


STN 1602 Character LCD Display 3.3V AIP31066L 4 Bit / 8 Bit MPU

Our Product Introduction

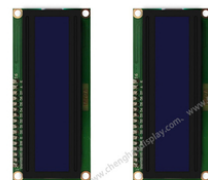
Basic Information

- Place of Origin: ShenZhen, China
- Brand Name: Chenghao/Oem
- Certification: ROHS ISO9001 CE
- Model Number: COB1602A
- Minimum Order Quantity: 100 pcs
- Price: /
- Packaging Details: All the products are packed in right way to keep it safe. For small sizes of products we use tray + carton, For bigger sizes we use foam slot + carton. we also design packages according to customers' requirements
- Delivery Time: 7-15 working days
- Payment Terms: T/T
- Supply Ability: 300Kpcs/month



Product Specification

- Product Name: Character LCD Displays
- Display Type: STN Blue Or Yellow-Green Or Vablack
- Duty/Blas: 1/6D 1/5B
- Driver IC: AIP31066L-001/UC7066-01
- Operating Voltage: 3.3 V / 5.0 V
- CONNECTOR: 4 Bit Or 8bit MPU
- Highlight: **1602 Character LCD Display 3.3V,
STN 1602 Character LCD Display,
AIP31066L 1602 lcd display module**



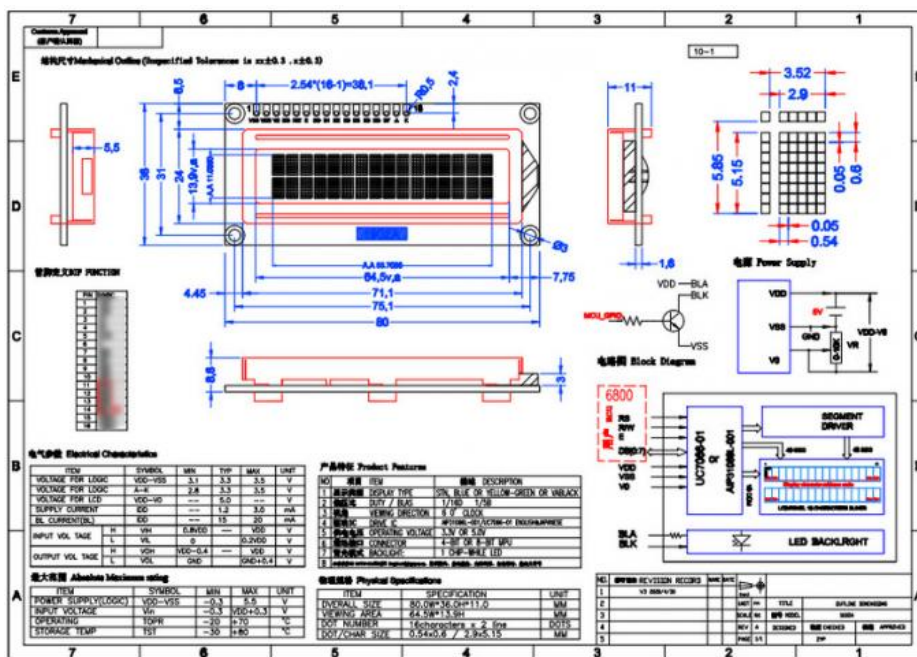
Product Description

1602 Character LCD Displays STN AIP31066L 4 bit or 8 bit MPU

1. Specification of Character Lcd

ITEM	Description
Lcd Model	COB1602A
Display Type	STN,Blue or Yellow-Green or Vablack
Duty / Bias	1/6D or 1/5B
Driver IC	AIP31066L-001/UC7066-01
Operating Voltage	3.3 V / 5.0 V
CONNECTOR	4Bit or 8bit MPU
Backlight	1 CHIP-WHILE LED

2. Drawings of Character Lcd Screen



Contact Us to get the Detailed Datasheet

[Please Click Here](#)

3. Quick Detail of Character Lcd Display

Product Feature

Display Type :STN,Blue or Yellow-Green or Vablack
 Duty/Bias:1/6D 1/5B
 Driver IC:AIP31066L-001/UC7066-01
 Operating Voltage:3.3 V / 5.0 V
 Connector:4Bit or 8bit MPU
 Backlight:1 CHIP-WHILE LED

Physical Specifications

Overall Size:80.0*36.0*11.0 mm
 Viewing Area:64.5*13.9 mm
 Dot Number:16 Characters x 2 Line Dots
 Dot / Char Size:0.54x0.6 / 2.9x5.15 mm

Electrical Characteristics

ITEM	SYMBOL	MIN	TYP	MAX	UNIT
Voltage For Logic	VDD-VSS	3.1	3.3	3.5	V
Voltage For Logic	A-K	2.8	3.3	3.5	V
Voltage For Lcd	VDD-V0	--	5.0	--	V
Supply Current	IDD	--	1.2	3.0	mA
BL Current(BL)	IDD	--	15	20	mA
Input Vol Tage	H: VIH L: VIL	0.8VDD 0	--	VDD 0.2VDD	V

Output Vol Tage	H:VOH L:VOL	VDD-0.4 GND	--	VDD GND+0.4	V V
-----------------	----------------	----------------	----	----------------	--------

Absolute Maximum Rating

ITEM	SYMBOL	MIN	MAX	UNIT
POWER Supply (Logic)	VDD-VSS	-0.3	5.5	V
Input Voltage	Vin	-0.3	VDD+0.3	V
Operating	Topr	-20	+70	°C
Storage Temp	TST	-30	+80	°C

4. Our Service

1. We provide a one-year product warranty service for all cooperation orders.
2. Our technical engineers will provide you with technical support online at any time.
3. Our factory has passed the ISO9001 quality management system certification, and all our products on sale can be provided with CE/ROHS certificates
4. Our professional after-sales service team will maintain stable contact with you.
5. If it is a product quality problem, communicate with us within 30 days, and we will replace it for you free of charge.
6. All goods will be inspected and tested before shipment.
7. Customer satisfaction is the most important thing to us. If you have any questions or concerns about our transactions. Please contact us via email. It will reply within 24 hours.

5.FAQ

(1). Packing:

Packed with anti-static bag ,bubble bags and foam box, which ensure your goods' safety . During the packaging process, preventive measures will be taken by us to assure that the goods are in a good condition during storage and delivery .If product is broken during transportation due to improper packing, the responsibility will be borne by the seller.

(2). Shipment:

How long will it take to deliver goods?

We will ship the goods within 7 days after your payment.And we will send you the tracking number the next day after the goods are shipped.

(3). After-sale service:

What about the warranty you offer?

We provide 12 months warranty for our lcds. There is no warranty if:

- 1). Man-made damage;
- 2). The products have been used already;
- 3). Our label is broken.

(4). How is the After-sales service?

- 1).We have a huge team which is in charge of after-sales service, also a service hotline dealing with buyers' complains and feedback.
- 2).We offer 24 hours online service to help buyers solving problems.
- 3).We offer buyers the market information updated regularly.

Remarks:

Before your installation, please check both appearance and function of the products, then install to the machine, any damages caused by un-professional installation is out of our responsibility.

If the products you received are defective or faulty, please let us know immediately, and return back to us within 7 days. we can change the defective products for the buyers free of charge.



Shenzhen ChengHao Optoelectronic Co., Ltd.



+86 755-27806536



add@chenghaolcm.com



chenghaolcd.com

7th floor, building C5, Hengfeng Industrial City, Hangcheng street, Bao'an District, Shenzhen