



## 8 Bit MCU Capacitive Touch Screen Monitor 7 Inch 800x480 Dot TFT LCD Module

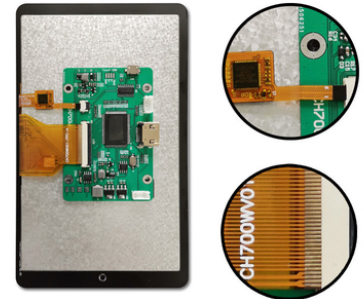
### Basic Information

- Place of Origin: ShenZhen, China
- Brand Name: Chenghao/Oem
- Certification: ROHS ISO9001 CE
- Model Number: CH700WV01E-CTD
- Minimum Order Quantity: 100 pcs
- Price: /
- Packaging Details: All the products are packed in right way to keep it safe. For small sizes of products we use tray + carton, For bigger sizes we use foam slot + carton. we also design packages according to customers' requirements
- Delivery Time: 7-15 working days
- Payment Terms: T/T
- Supply Ability: 300Kpcs/month



### Product Specification

- Product Name: Capacitive Touch Screen Monitor
- Module Type: 7" TFT+CTP
- Display Mode: TN/Transmissive/Normally White
- Number Of Dots: 800\*480 Dot
- Viewing Direction: 12 O'clock
- Interface: 8 Bit MCU
- Backlight Type: White LED
- Highlight: **MCU Capacitive Touch Screen Monitor, TFT CTP Capacitive Touch Screen Monitor, 800x480 Dots TFT LCD Module**



## Product Description

### Capacitive Touch Screen Monitor 7 Inch 800\*480 Tft Lcd Module

#### 1. Specification of touchscreen monitor

ITEM	STANDARD VALUES	UNITS
Module No.	CH700WV01E-CTD	--
LCD type	7" TFT+CTP	--
Dot arrangement	800x3(RGB)x480	dots
Color	16.7	M
Module size	186.9*110.6*5.15	mm
Active area	154.08*85.92	mm
Operating temperature	-20 ~ +70	°C
Storage temperature	-30 ~ +80	°C

#### 2. Description of touchscreen display

ChengHao Display model CH700WV01E-CTD is a color active matrix thin film transistor (TFT) liquid crystal display (LCD) that uses amorphous silicon TFT as a switching device. This model is composed of a Tn TFT LCD panel, a driving IC, a ctp, a back-light and FPC.

This TFT LCD has a 7.0" ( horizontal screen ) diagonally measured active display area with 800\*480 dot resolution. The driver can display 16M colors by R.G.B. signal input and is mounted on the glass and the interconnection via FPC including components to drive the display module. 8 bit MCU interface is supported.

In addition, FPC can also be customized according to customer requirements, such as modifying back-light and FPC structure, interface definition, etc.

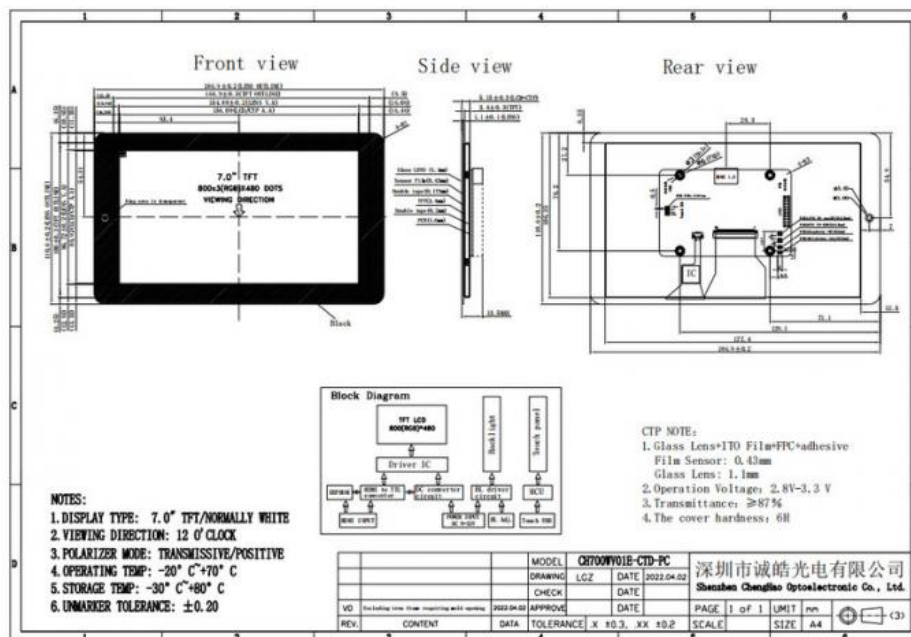
RoHS Compliance & Halogen Free.

If the CH700WV01E-CTD does not meet your project needs, we have many similar standard products for you to choose from, please contact us for more product information.

#### 3. Drawings of touchscreen module

Notes:

- (1) Display Type : 7inch TFT LCD + CTP
- (2) Viewing Direction : 12:00
- (4) Polarizer Mode : TN / Transmissive / Normally white
- (5) Operating Temp : -20~ 70 °C
- (6) Storage Temp : -30~80 °C
- (7) Unmarker Tolerance: ±0.20
- (8) Protection : ROHS

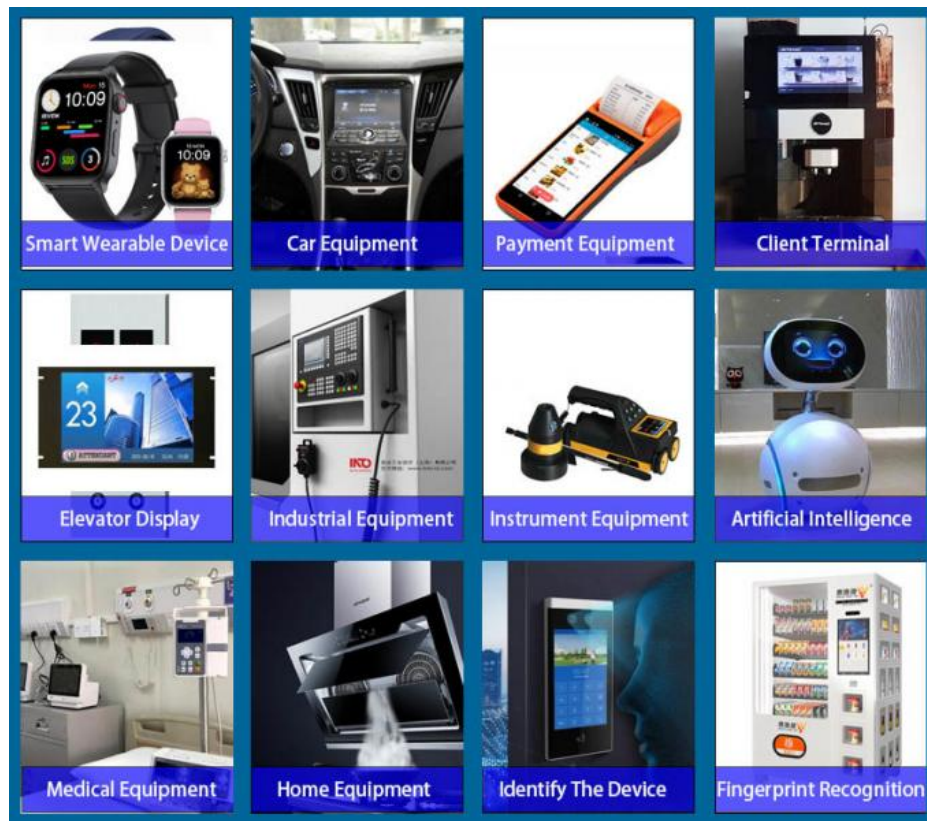


#### 4. Quick Detail of color touchscreen module

- \* LCD name: Capacitive Touch Screen Monitor 7 Inch 800\*480 Tft Lcd Module
- \* LCM No.: CH700WV01E-CTD
- \* Size.: 7.0 inch
- \* Display type: 7"TFT+CTP

- \* colors: 16.7 M
- \* Dot Arrangement : 800x3(RGB)x480 dots
- \* View direction: 12:00
- \* Color Pixel Arrangement: RGB vertical stripe
- \* Display mode: Transmissive / Positive
- \* Outline Dimension: 186.9\*110.6\*5.15 mm
- \* Display Area: 154.08\*85.92 mm
- \* Contrast: 500
- \* Interface type: 8 bit mcu
- \* Pin NO.: 50 pin
- \* Operating temperature: -20 ~ +70
- \* Storage temperature: -30 ~ +80 °C

## 5. Application of touchscreen lcd module



## 6. Our Service

1. We provide one-year product after-sales guarantee service to all customers who purchase our products.
2. For any technical problems encountered by customers in the process of testing or using our products, our technical team will provide customers with remote online technical support services at any time.
3. We are a factory-type supplier with ISO certification. Our products on sale have undergone strict quality inspection and testing before shipment, and have also passed CE/ROHS certification.
4. We have a professional after-sales service team, which can provide strong guarantee and logistical technical services for your orders.
5. Replacement within 30 days after the shipment of products from us due to products' problems.
6. We have long cooperation with many shipping companies and our export volume is large. The shipping companies can offer us good discounts.
7. All goods will be inspected and tested before shipment.
8. Customer's satisfactory is most important to us. If you have any problem or questions regarding our transaction. Please contact us by Email. It will be responded within 24 hours.



**Shenzhen ChengHao Optoelectronic Co., Ltd.**



+86 755-27806536



add@chenghaolcm.com



chenghaolcd.com

7th floor, building C5, Hengfeng Industrial City, Hangcheng street, Bao'an District, Shenzhen