

3.5 Inch Capacitive Touch Screen 320*240 IPS TFT All Viewing Direction

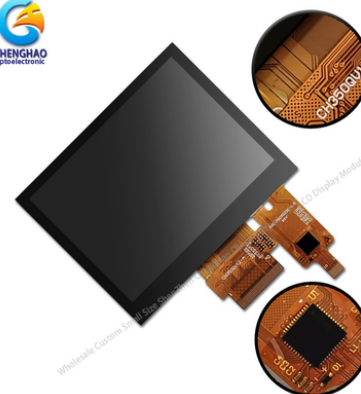
Basic Information

- Place of Origin: ShenZhen, China
- Brand Name: Chenghao/Oem
- Certification: ROHS ISO9001 CE
- Model Number: CH350QV12A-CT-PA
- Minimum Order Quantity: 100 pcs
- Price: /
- Packaging Details: All the products are packed in right way to keep it safe. For small sizes of products we use tray + carton, For bigger sizes we use foam slot + carton. we also design packages according to customers' requirements
- Delivery Time: 7-15 working days
- Payment Terms: T/T
- Supply Ability: 300Kpcs/month



Product Specification

- Product Name: 3.5 Inch Capacitive Touch Screen
- Module Type: 3.5TFT+CTB
- Display Mode: IPS/Transmissive/Normally Black
- Number Of Dots: 320*3(RGB)*240
- Viewing Direction: 80/80/80/80
- Module Size: 76.9*63.9*8.4 Mm
- TFT Active Area: 70.08*52.56 Mm
- Highlight: 3.5 Inch Capacitive Touch Screen, TFT CTB Capacitive Touch Screen, Capacitive Touch Ips Tft Display



Product Description

3.5 Inch Capacitive Touch Screen 320*240 IPS All Viewing Direction Tft

1. Specification of capacitive touch screen panel

Type:	TFT+CTP
Viewing Direction	80/80/80/80
Connection type:	COG+FPC
Operating temperature:	20°C~70°C
Storage temperature:	30°C~80°C
Interface type:	LVDS
Resolution	320*3(RGB)*240 dot

2. Description of capacitive touch screen

ChengHao Display model CH350QV12A-CT is a color active matrix thin film transistor (TFT) liquid crystal display (LCD) that uses amorphous silicon TFT as a switching device. This model is composed of a TFT LCD panel, a Capacity Touch Pane, a driving IC, a back-light and FPC.

This TFT LCD has a 3.5"(Horizontal screen) diagonally measured active display area with 320*240 dots resolution.

The driver used for this project can display 262K/65K colors by R.G.B. signal input. The driver is mounted on the glass and the interconnection via FPC including components to drive the display module.

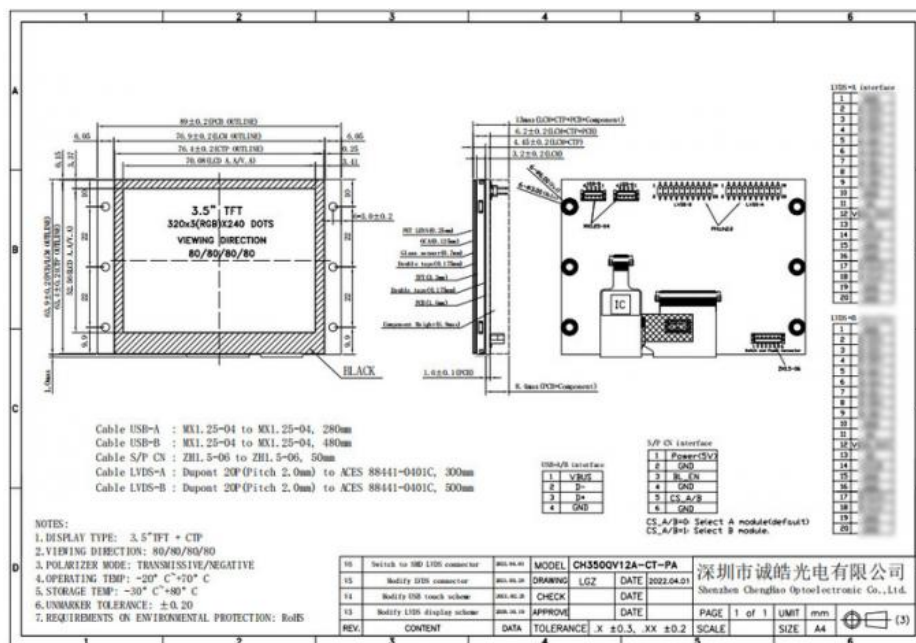
In addition, FPC can also be customized according to customer requirements, such as modifying back-light and FPC structure, interface definition, etc.

RoHS Compliance & Halogen Free.

3. Drawings of capacitive touch panel

Notes:

- (1) Display Type : 3.5" TFT+CTP
- (2) Viewing Direction : All
- (3) Polarizer Mode : TRANSMISSIVE/NEGATIVE
- (4) Operating Temp : -20~70 °C
- (5) Storage Temp : -30~80 °C
- (6) Unmarker Tolerance: ± 0.20
- (7) Protection : ROHS



4. Quick Detail of lcd capacitive screen

- * LCD name: 3.5 Inch Capacitive Touch Screen 320*240 IPS All Viewing Direction Tft
- * Part No.: CH350QV12A-CT-PA
- * Size.: 3.5 inch
- * With touch panel or not: Yes
- * Touch type: Capacitive
- * Display type: TFT
- * Display colors: 262K / 65K
- * Resolution (pixels): 320(RGB)*240
- * Viewing direction: 80/80/80/80
- * Display mode: IPS/Transmissive/ Normally Black

- * Overall size: 76.9*63.9*8.4 mm
- * Active Area: 70.08*52.56 mm
- * Contrast: 800:1
- * Interface type: LVDS
- * Backlight type and color: LED backlight/white

5. Application of 3.5 inch touch screen



6. Our Service

Shipping Policy:

- 1- Regularly, we shipped via Fedex/Dhl/UPS , express way (2-7 working days arrival), suitable for small order.
- 2- Sea shipping way, (25-40 days arrival), low cost, port to port, usually for large quantity order.

Custom/OEM:

Custom service is ok.

Sample Policy:

- 1- Usually we offer random sample for free but with your sample shipping freight charge paid.
- 2- We offer 1-2 pcs each sample randomly, if for more pcs, we will try send to you, if not and you must request more pcs, we will charge same sample fees for make more pcs samples to you.

Easy order process:

Please kindly confirm us about product name, images, colors and quantity before you make the order .



Shenzhen ChengHao Optoelectronic Co., Ltd.



+86 755-27806536



add@chenghaolcm.com



chenghaolcd.com

7th floor, building C5, Hengfeng Industrial City, Hangcheng street, Bao'an District, Shenzhen