



## 2.8 Inch LCD TFT Touchscreen 240x320 Dots Small LCD Panel With ILI9341

### Our Product Introduction

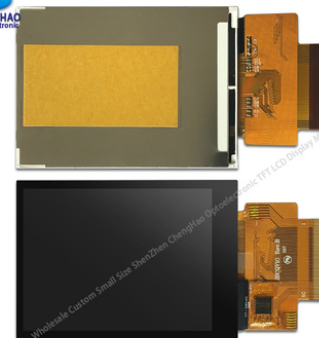
#### Basic Information

- Place of Origin: ShenZhen, China
- Brand Name: Chenghao/Oem
- Certification: ROHS ISO9001 CE
- Model Number: CH280QV10-CT
- Minimum Order Quantity: 100 pcs
- Price: /
- Packaging Details: All the products are packed in right way to keep it safe. For small sizes of products we use tray + carton, For bigger sizes we use foam slot + carton. we also design packages according to customers' requirements
- Delivery Time: 7-15 working days
- Payment Terms: T/T
- Supply Ability: 300Kpcs/month



#### Product Specification

- Product Name: 2.8 Inch Lcd Tft Touchscreen
- Module Type: 2.8"TFT + CTP
- Display Mode: TN/Transmissive/Normally White
- Number Of Dots: 240\*3(RGB)\*320
- Viewing Direction: 6 O'clock
- Module Size: 50.0(W)\*69.2(H)\*4.0(T)mm
- TFT Active Area: 43.2(W)\*57.6(H)mm
- Highlight: 2.8 inch LCD TFT Touchscreen, CTP Lcd Tft Touchscreen, ILI9341 small lcd panel



## Product Description

### 2.8 Inch Lcd Tft Touchscreen 240\*320 Small Lcd Panel With ILI9341

#### 1. Specification of colorful lcd panel

ITEM	STANDARD VALUES	UNITS
LCD type	2.8" TFT	--
Dot arrangement	240*320	dots
Driver IC	ILI9341	--
Module size	50.0(W)*69.2(H)*4.0(T)	mm
Active area	43.2(W)*57.6(H)	mm
Operating temperature	- 20 ~ + 70	°C
Storage temperature	- 30 ~ + 80	°C
Back Light	4 pcs White LED In Paralle	--
Weight	TBD	g

#### 2. Description of color lcd display

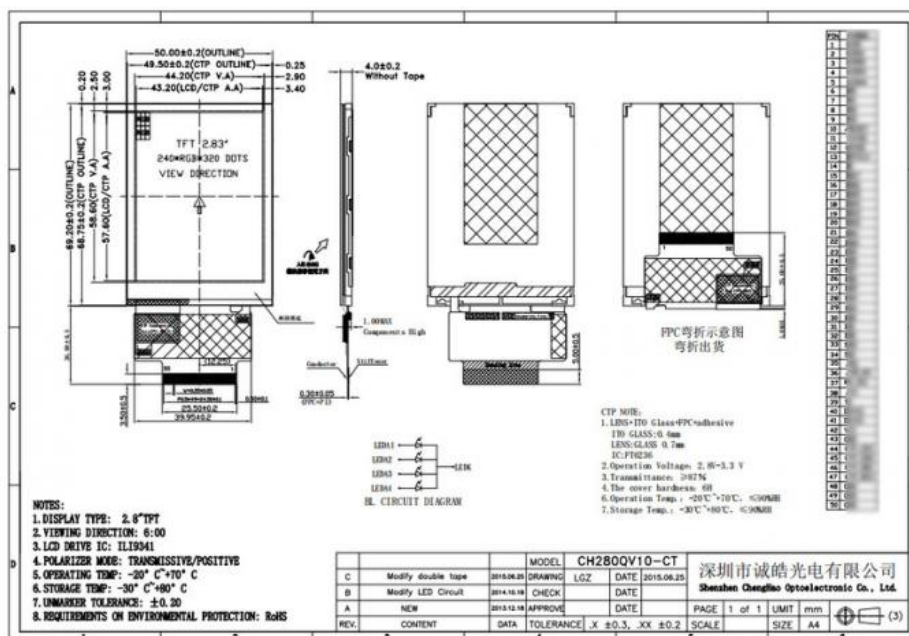
chenghao is a manufacturer engaged in the production and sales of lcd modules, providing OEM services for global small display users. Our products include Monochrome Lcd Module and Color TFT Lcd Module, and a large number of standard products are available for customers to choose from.

CH280QV10-CT is a 2.8 inch capacity touch screen display module, including a tft lcd panel, a driver IC, a touch panel, a backlight and an FPC. ILI9341 is used as the control IC of this module, which is mounted on glass and can be interconnected with display components through FPC. FPC supports customization, and FPC shape structure, interface definition, etc. can be customized according to customer requirements. In addition, we also have rich experience in touch screen display, which can perfectly integrate TFT Lcd Module, CTP and cover into project components. If you have such needs, please contact us.

#### 3. Drawings of tft color display

Notes:

- (1) Display Type : 2.8"TFT+CTP
- (2) Viewing Direction : 6:00
- (3) Lcd Drive IC : ILI9341
- (4) Operating Temp : -20~70 °C
- (5) Storage Temp : -30~80 °C
- (6) Unmarker Tolerance:  $\pm 0.20$
- (7) Protection : ROHS



#### 4. Application of tft color screen



## 5. FAQ

Q:Payment methods?

T/T, Paypal and Western union etc.

For samples: payment in advance.

For mass production: 50% deposit and 50% balance before shipment.

Q: What is the lead time of the products?

A:Samples in stock will be sent within 3 days after payment.

Two to Four weeks for mass production

Q:How long is the warranty period?

A:Generally the warranty period is one year. It depends on different products.

Q:What is the Product MOQ?

A:Different product has the different MOQ, please contact us sales for detailed information.

Q: What's your after-sale service?

A: If any problems, you will get our reply within 24 hours. Solution will be offered instantly by our professional technical team.

Q:Can you provide OEM service?

A:yes, we can provide both OEM and ODM service,can customize products according to the drawings you supply

Q: How can I trust your product quality?

A:The company has advanced the incoming inspection, on-line test and reliability test equipment and system, the company products through the ROHS,CE testing



**Shenzhen ChengHao Optoelectronic Co., Ltd.**



+86 755-27806536



add@chenghaolcm.com



chenghaolcd.com

7th floor, building C5, Hengfeng Industrial City, Hangcheng street, Bao'an District, Shenzhen