



10.1 Inch Small Color LCD Display 1024x600 50 Pin RGB TFT LCD Module

Our Product Introduction

Basic Information

- Place of Origin: ShenZhen, China
- Brand Name: Chenghao/Oem
- Certification: ROHS ISO9001 CE
- Model Number: CH101WS03B
- Minimum Order Quantity: 100 pcs
- Price: /
- Packaging Details: All the products are packed in right way to keep it safe. For small sizes of products we use tray + carton, For bigger sizes we use foam slot + carton. we also design packages according to customers' requirements
- Delivery Time: 7-15 working days
- Payment Terms: T/T
- Supply Ability: 300Kpcs/month



Product Specification

- Product Name: Small Color Lcd Display
- Module Type: 10.1"TFT
- Display Mode: TN/Transmissive/Normally White
- Number Of Dots: 1024*600
- Viewing Direction: 12 O'clock
- Interface: RGB
- Luminance: 300 Cd/m2
- Highlight: **ROHS Horizontal Small Color LCD Display, Small Color LCD Display 1024x600Dots, 300 cd/m2 tft lcd module**



More Images



Product Description

10.1 Inch Small Color Lcd Display 1024*600 50 pin Rgb tft lcd module

1. Specification of Tiny Lcd Screen

ITEM	STANDARD VALUES	UNITS
LCD type	10.1" TFT	--
Dot arrangement	1024(RGB)× 600	dots
Module size	235(W) × 143(H)×5.(T)	mm
Active area	223.72(W) × 126.28 (H)	mm
Operating temperature	- 20 ~ + 70	°C
Storage temperature	- 30 ~ + 80	°C
Back Light	36 White LED In Paralle	--
Weight	TBD	g

2. Description of Small Lcd Panel

ChengHao Display model CH101WS03B is a color active matrix thin film transistor (TFT) liquid crystal display (LCD) that uses amorphous silicon TFT as a switching device.

This TFT LCD has a 10.1 (Horizontal screen) inch diagonally measured active display area with 1024*3(RGB)*600 dots resolution.

The driver used for this project can display 16M colors by R.G.B. signal input. The driver is mounted on the glass and the interconnection via FPC including components to drive the display module.

In addition, FPC can also be customized according to customer requirements, such as modifying back-light and FPC structure, interface definition, etc.

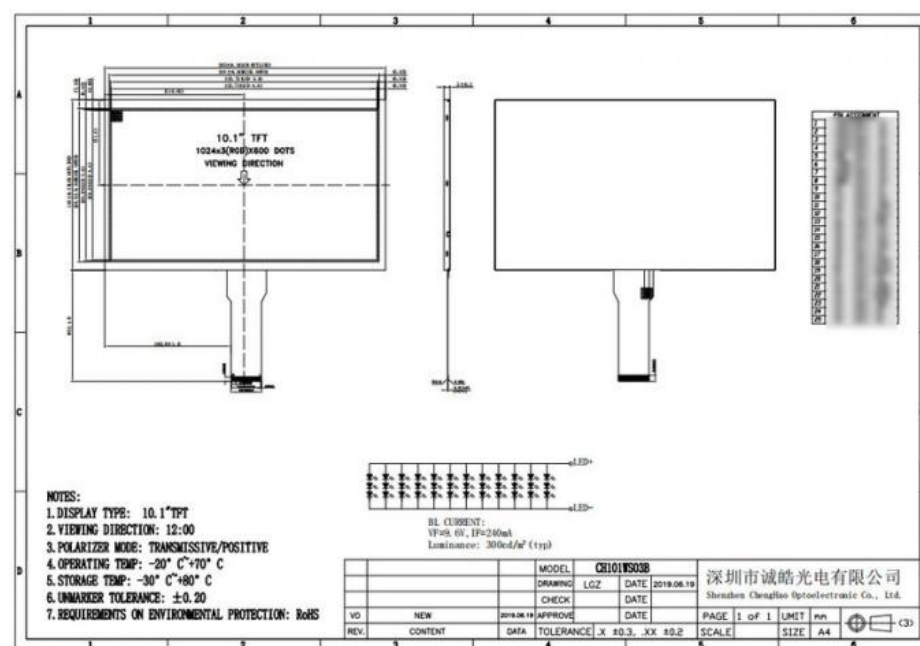
RoHS Compliance & Halogen Free.

Note: All our tft lcd modules support touch panel installation.

3. Drawings of Small Lcd Display

Notes:

- (1) Display Type : 10.1" Tft lcd
- (2) Viewing Direction : 12:00
- (4) Polarizer Mode : Tn / Transmissive / Normally While
- (5) Operating Temp : -20~70 °C
- (6) Storage Temp : -30~80 °C
- (7) Unmarker Tolerance: ±0.20
- (8) Protection : ROHS



4. Quick Detail of Small Lcd Screen

* LCD name: 10.1 Inch Small Color Lcd Display 1024*600 50 Pin Rgb Tft Lcd Module
* Part No.: CH101WS03B
* Size.: 10.1 inch
* Support touch panel Type: No
* Display type: 10.1"TFT
* Display colors: 16M
* Resolution (pixels): 1024*3(RGB)*600
* Viewing direction: 12 O'clock
* Display mode: TN/Transmissive/Normally white
* Overall size: 235*143*5 mm
* Active Area: 222.72*125.28 mm
* Luminance: 300 cd/m2
* Contrast: 500:1
* Interface: RGB
* Pin NO.: 50
* Pin pitch: 0.35 mm
* Backlight : 36 pcs White LED
* Operating temperature: -20 ~ +70 °C
* Storage temperature: -30 ~ +80 °C

5. Our Service

1. We are a factory-type supplier with ISO certification. Our products on sale have undergone strict quality inspection and testing before shipment, and have also passed CE/ROHS certification.
2. We have a professional after-sales service team, which can provide strong guarantee and logistical technical services for your orders.
3. Replacement within 30 days after the shipment of products from us due to products' problems.
4. We have long cooperation with many shipping companies and our export volume is large. The shipping companies can offer us good discounts.
5. All goods will be inspected and tested before shipment.



Shenzhen ChengHao Optoelectronic Co., Ltd.



+86 755-27806536



add@chenghaolcm.com



chenghaolcd.com

7th floor, building C5, Hengfeng Industrial City, Hangcheng street, Bao'an District, Shenzhen