

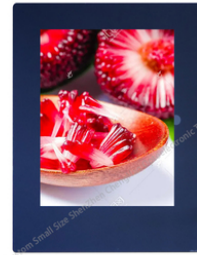


2.4" Thin LCD Display 50 Pin SPI RGB Multi Interface LCD Capacitive Touchscreen

Our Product Introduction

Basic Information

- Place of Origin: ShenZhen, China
- Brand Name: Chenghao/Oem
- Certification: ROHS ISO9001 CE
- Model Number: CH240QV52A-CTB
- Minimum Order Quantity: 100 pcs
- Price: /
- Packaging Details: All the products are packed in right way to keep it safe. For small sizes of products we use tray + carton, For bigger sizes we use foam slot + carton. we also design packages according to customers' requirements
- Delivery Time: 7-15 working days
- Payment Terms: T/T
- Supply Ability: 300Kpcs/month



Product Specification

- Product Name: Thin Lcd Display
- Driver IC: ST7789
- Resolution: 240x320 Dots
- Viewing Direction: All Viewing Direction
- Operating Temperature: -20~ + 70°C
- Luminance: 300cd/m2
- Interface: SPI MCU SPI+RGB
- Highlight: 2.4" thin lcd display, SPI RGB thin lcd display, Multi Interface LCD Capacitive Touchscreen



More Images



Product Description

2.4" Thin Lcd Display 50 Pin SPI RGB Multi Interface Capacitive Touch Screen Module

1. Specification of Lcd Touch Screen Monitor

ITEM	STANDARD VALUES	UNITS
LCD type	2.4"TFT+CTP	--
Dot arrangement	240(RGB)× 320	dots
Driver IC	ST7789V	--
Module size	52.72(W)*70.26(H)*4.0(T)	mm
Active area	36.72(W)*48.96(H)	mm
Operating temperature	- 20 ~ + 70	°C
Storage temperature	- 30 ~ + 80	°C
Back Light	4 White LED In Paralle	--
Weight	TBD	g

2. Description of Touch Screen Module

ChengHao Display model CH240QV52A-CTB is a color active matrix thin film transistor (TFT) liquid crystal display (LCD) that uses amorphous silicon TFT as a switching device. This model is composed of a TFT LCD panel, a driving IC, a back- light, a capacitive touch panel and FPC.

This TFT LCD has a 2.4 (portrait) inch diagonally measured active display area with 240*320 dots resolution, ST7789 mounted on glass is the driver IC of this module. This TFT LCD Module supports SPI / MCU / SPI+RGB multi It can display 262K or 65K colors by inputting RGB signals through various interfaces. In addition, the module has a capacitive touch panel and supports multi-touch.

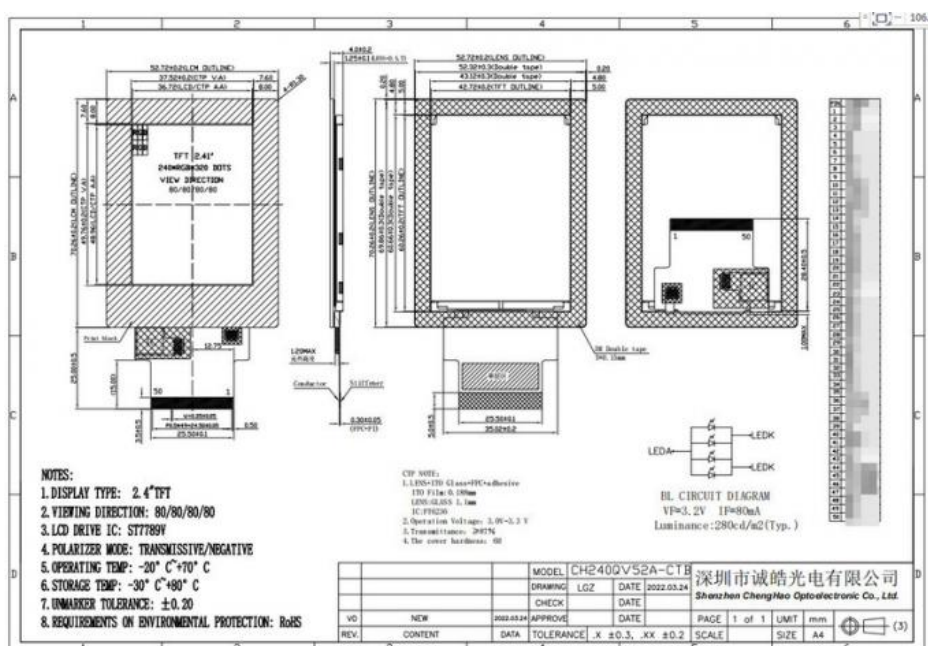
In addition, FPC can also be customized according to customer requirements, such as modifying back-light and CTP structure, interface definition, etc.

RoHS Compliance & Halogen Free.

3. Drawings of Lcd Tft Touchscreen

Notes:

- (1) Display Type : 2.4" Tft + CTP
- (2) Viewing Direction : 80/80/80/80
- (3) Lcd Drive IC : ST7789V
- (4) Polarizer Mode : IPS / Transmission / Normally Black
- (5) Operating Temp : -20~70 °C
- (6) Storage Temp : -30~80 °C
- (7) Unmarker Tolerance: ±0.20
- (8) Protection : ROHS



4. Application of Small Touch Screen Display

Telecommunication Devices

Telephone, interphone, watch, tablet PC, radio, etc

Consumer Products

Camera, DVD player, toy, Cell Phone, game player, etc

Technical Equipment

Elevator controller, Industrial machine, etc

Office Automation

Printer, scanner, attendance machine, fax machine, etc

Home Appliances

Air-condition display, refrigerator, electric cooker, video doorbell, etc

Automobile

GPS, video player, speedometer, audio broadcast, etc

IT Products

Camera, handheld digital video, projector, media play, tablet PC, etc

Medical Equipment

Ultrasound machine, therapeutic equipment Blood pressure meter, etc



5. Why Choose Us ?

The high quality products enable it to build a long-term relationship with world-famous enterprises in the industries

(1) Competitive Price

Own-owned factories offer lower prices and better quality assurance.

(2) Strong Technical Strength

We are a top supplier specializing in the production of color LCD screens. We have a technical team with rich experience in product research and development, and can provide customers with professional technical support and customized consulting services at any time, which is very important for cooperative customers with special project needs.

(3) Long-term Partner

Products are sold to more than 40 countries, so from Chenghao Optoelectronic you can get more stable supplying promise;

(4) Professional Service

We have a professional after-sales team that can provide you with after-sales consulting services 24 hours a day. At the same time, if you encounter any problems in the process of using our products, you can give us feedback, and our technical engineers will provide you with online remote consulting services at any time.

(5) Quality to be ensure

All panels are 100% brand new, without false panels; All packages have labels and serial numbers for easy viewing by customers;



Shenzhen ChengHao Optoelectronic Co., Ltd.



+86 755-27806536



add@chenghaolcm.com



chenghaolcd.com

7th floor, building C5, Hengfeng Industrial City, Hangcheng street, Bao'an District, Shenzhen