



4.3 Inch Tft Small Lcd Touch Screen 10 Pin 480*272 Resolution With Gt911 Ctp Ic

Our Product Introduction

Basic Information

- Place of Origin: ShenZhen, China
- Brand Name: Chenghao/Oem
- Certification: ROHS ISO9001 CE
- Model Number: CH430WQ16A-CTC
- Minimum Order Quantity: 100 pcs
- Price: /
- Packaging Details: All the products are packed in right way to keep it safe. For small sizes of products we use tray + carton, For bigger sizes we use foam slot + carton. we also design packages according to customers' requirements
- Delivery Time: 7-15 working days
- Payment Terms: T/T
- Supply Ability: 300Kpcs/month

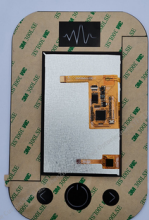


Product Specification

- Product Name: 4.3 Inch Tft Lcd
- Display Type: 4.3" TFT
- Viewing Direction: 80/80/80/80
- Driver IC: LT7680
- POLARIZER MODE: TRANSMISSIVE/NEGATIVE
- OPERATING TEMP: -20°C~+70°C
- STORAGE TEMP: -30°C~+80°C
- Highlight: 4.3 inch small lcd touch screen,
tft small lcd touch screen,
10 pin tft lcd touch screen



More Images



Product Description

4.3 Inch Tft Lcd Wholesale 10 Pin 480*272 Resolution Touchscreen With GT911 CTP IC

1. Specification

General Features			
Diagonal Size	4.3 inch	Type	LCM , a-Si TFT-LCD
Pixel Format	480(RGB)×272	Configuration	RGB Vertical Stripe
Active Area	95.04(W)×53.86(H) mm	Outline Dim.	183.53(W)×119.4(H)×5.65(T) mm
Luminance	300 cd/m ² (Typ.)	Contrast Ratio	800:1 (Typ.) (TM)
View Direction	80/80/80/80	Response Time	17/18 (Typ.)(Tr/Td) ms
Driver IC	LT7680	Interface Type	Spi

2. Description

ChengHao Display model CH430WQ16A-CTC is a color active matrix thin film transistor (TFT) liquid crystal display (LCD) that uses amorphous silicon TFT as a switching device. This model is composed of a TFT LCD panel, a driving IC, a back-light, a capacitive touch panel and FPC.

This TFT LCD has a 4.3 (Landscape screen) inch diagonally measured active display area with 480x272 resolution.

The TFT driver IC and CTP driver IC used in this project are LT7680 and GT911 respectively. The driver is mounted on the glass and the interconnection via FPC including components to drive the display module. Support SPI interface.

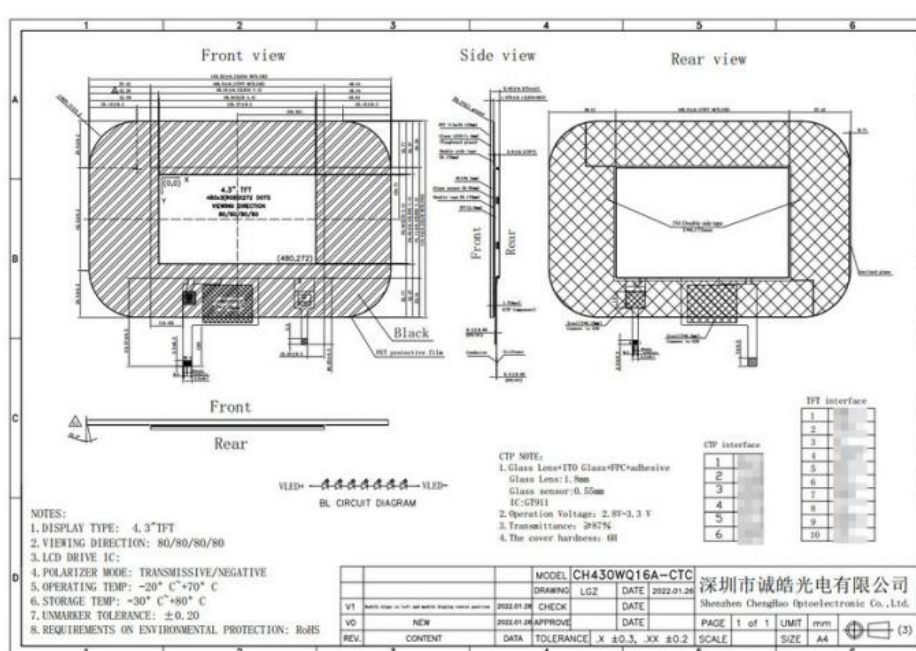
In addition, FPC can also be customized according to customer requirements, such as modifying back-light and CTP structure, interface definition, etc.

RoHS Compliance & Halogen Free.

3. Drawings

Notes:

- (1) Display Type : 4.3" Tft lcd
- (2) Viewing Direction : 80/80/80/80
- (3) Lcd Drive IC : LT7680
- (4) Polarizer Mode : IPS / Transmissive / Normally Black
- (5) Operating Temp : -20~70 °C
- (6) Storage Temp : -30~80 °C
- (7) Unmarker Tolerance: ±0.20
- (8) Protection : ROHS



4. Quick Detail

- * LCD name: 4.3 Inch Tft Lcd Wholesale 10 Pin 480*272 Resolution Touchscreen With GT911 CTP IC
- * Part No.: CH430WQ16A-CTC
- * Size.: 4.3 inch
- * Support touch panel Type: Capacitive Touch Panel

- * Display type: 4.3"TFT
- * Display colors: 16.7M / 262k / 65k (Optional)
- * Resolution (pixels): 480*272 cd/m2
- * Viewing direction: 80/80/80/80
- * TFT Controller IC: LT7680
- * CTP Controller IC: GT911
- * Display mode: Transmissive / Normally Black / IPS
- * Overall size: 183.53(W)×119.4(H)×5.65(T) mm
- * Active Area: 295.04(W)×53.86(H) mm
- * Luminance: 300 cd/m2
- * Contrast: 800 : 1
- * Interface type: SPI
- * Pin NO.: 10 pins
- * Pin pitch: 0.5mm
- * Backlight : 300 cd/m2
- * TP NOTE:
- 1.Glass Lens+ITO Glass+FPC+adhesive
- Glass Lens:1.8mm
- Glass sensor:0.55mm
- IC:GT911
- 2.Operation Voltage:2.8V-3.3 V
- 3.Transmittance:≥87
- 4.The cover hardness:6H
- * OPERATING TEMP: -20°C~+70
- * STORAGE TEMP: -30°C~+80°C
- * UNMARKER TOLERANCE: ±0.20
- * IREMENTS ON ENVIRONMENTAL PROTECTION: RoHS

5. Application

Application



Smart attendance machine



Smart access machine



Speed gate control



Facial recognition system



Autonomic retail system



Intelligent robot

6. Our Service

1. And if it is necessary for you to have technical support in the process of development, we can provide it for you at any time.
2. Good quality and credit is the soul of our company. Before shipment, we will guarantee that the products will be done the aging test and 100% of the visual and electric logging.
3. When the product upgrades, we will notify the related clients in advance, and the upgrading product can be perfectly compatible with the old ones.
4. The warranty period of the product is 12 months.

7. FAQ

Q:Payment methods?

T/T, Paypal and Western union etc.

For samples: payment in advance.

For mass production: 50% deposit and 50% balance before shipment.

Q: What is the lead time of the products?

A:Samples in stock will be sent within 3 days after payment.

Two to Four weeks for mass production

Q:How long is the warranty period?

A:Generally the warranty period is one year. It depends on different products.

Q:What is the Product MOQ?

A:Different product has the different MOQ, please contact us sales for detailed information.

Q: What's your after-sale service?

A: If any problems, you will get our reply within 24 hours. Solution will be offered instantly by our professional technical team.

Q:Can you provide OEM service?

A:yes, we can provide both OEM and ODM service,can customize products according to the drawings you supply

Q: How can I trust your product quality?

A:The company has advanced the incoming inspection, on-line test and reliability test equipment and system, the company products through the ROHS,CE testing"



Shenzhen ChengHao Optoelectronic Co., Ltd.



+86 755-27806536



add@chenghaolcm.com



chenghaolcd.com

7th floor, building C5, Hengfeng Industrial City, Hangcheng street, Bao'an District, Shenzhen