



1.44 Inch Tft Screen Lcd Display Module 128x128 Resolution 9 Pin Serial

Basic Information

- Place of Origin: ShenZhen, China
- Brand Name: Chenghao/Oem
- Certification: ROHS ISO9001 CE
- Model Number: CH144QQ21A
- Minimum Order Quantity: 100 pcs
- Price: /
- Packaging Details: All the products are packed in right way to keep it safe. For small sizes of products we use tray + carton, For bigger sizes we use foam slot + carton. we also design packages according to customers' requirements
- Delivery Time: 7-15 working days
- Payment Terms: T/T
- Supply Ability: 300Kpcs/month



Product Specification

- Product Name: 1.44 Inch Tft Screen
- Module Size: 29(W)×34.41(H)×2.2(T) Mm
- Active Area: 25.4976(W)×26.496(H) Mm
- Dot Pitch: 0.1992(W)×0.207(H) Mm
- Interface: 4 Wire SPI
- Operating Temperature: -20 ~ +70 °C
- Storage Temperature: -30 ~ +80 °C
- Back Light: 2 White LED
- Highlight: 1.44 inch lcd display module,
128x128 resolution lcd display module,
1.44 inch tft lcd module



More Images



Product Description

1.44 Inch Tft Screen High Quality 128x128 Resolution 9 Pin Serial Lcd Display Module

1. Specification

Part No.	CH144QQ21A
Size	1.44
Resolution	128*128
Outline Dimension	29(W)×34.41(H)×2.2(T) mm
Active Area	25.4976(W)×26.496(H) mm
Interface	4 wire SPI
IC	ST7735
FPC	9 PIN
Working temperature	-20°C ~ 70°C
Storage temperature	-30°C ~ 80°C
Delivery Time	10 days

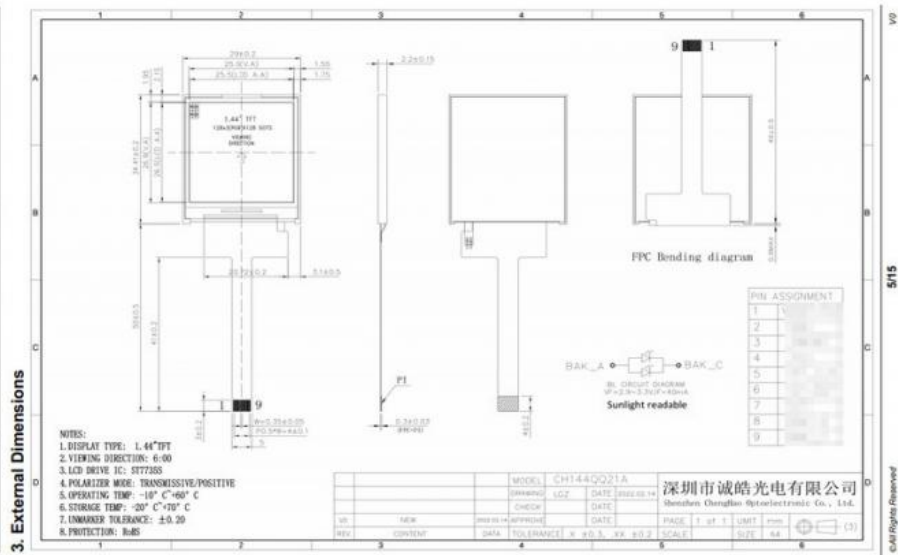
2. Description

- * CH144QQ21A is a Transmissive type color active matrix liquid crystal display (LCD).
- * It is composed of a TFT LCD panel, driver IC, FPC, a Hight Brightness backlight.
- * 1.44 inch color screen display
- * It is 128(RGB)×128 resolution TFT LCD module, clear display
- * a Hight Brightness backlight : 800 cd/m2 and Support Sunlight Readable
- * RoHS & REACH compliant.
- * Using 4 Wire Spi Interface
- * Provide a rich sample program
- * Military-grade process standards, long-term stable work
- * Provide underlying driver technical support
- * Long term stable production and guaranteed supply
- * Backlight with different brightness options from 200 - 1500cd/m2 are available.
- * Specific touch panel can be designed & customized.
- * Support customized service! Customizable content includes FPC/backlight brightness/installation of touch panel, etc.

3. Drawings

Notes:

- (1) Display Type : 1.44" Tft lcd
- (2) Viewing Direction : 6 o'clock
- (3) Lcd Drive IC : ST7735
- (4) Polarizer Mode : TN / Transmissive / Normally White
- (5) Operating Temp : -20~70 °C
- (6) Storage Temp : -30~80 °C
- (7) Unmarker Tolerance: ±0.20
- (8) Protection : ROHS



4. Quick Detail

- * LCD name: 1.44 Inch Tft Screen High Quality 128x128 Resolution 9 Pin Serial Lcd Display Module
- * Part No.: CH144QQ21A
- * Size.: 1.44 inch
- * With touch panel or not: No
- * Display type: TFT
- * Display colors: 16.7M / 262k / 65k (Optional)
- * Resolution (pixels): 128*128 cd/m2
- * Pixel pitch: 0.1992(W)×0.207(H) mm
- * Viewing direction: 6 o'clock
- * Controller IC: ST7735s
- * Display mode: Transmissive/ Normally White/Tn
- * Overall size: 29(W)×34.41(H)×2.2(T) mm
- * Active Area: 25.4976(W)×26.496(H) mm
- * Luminance: 800 cd/m2
- * Contrast: 500 : 1
- * Interface type: 4-Wire SPI
- * Pin NO.: 9 pins
- * Pin pitch: 0.5mm
- * Backlight type and color: LED backlight/white
- Backlight: 2 LED parallel
- * LED Life span: 20000h

5. Application

APPLICATION



■ Weigh



■ Meter



■ Instrument



6. Our Service

Shipping Policy:

- 1- Regularly, we shipped via Fedex/Dhl / UPS , express way (2 - 7 working days arrival), suitable for small order.
- 2- Sea shipping way, (25 - 40 days arrival), low cost, port to port, usually for large quantity order.

Custom / OEM:

Custom service is ok.

Sample Policy:

- 1- Usually we offer random sample for free but with your sample shipping freight charge paid.
- 2- We offer 1-2 pcs each sample randomly, if for more pcs, we will try send to you, if not and you must request more pcs, we will charge same sample fees for make more pcs samples to you.

Easy order process:

Please kindly confirm us about product name, images, colors and quantity before you make the order .

7. FAQ

Q:Payment methods?

T/T, Paypal and Western union etc.

For samples: payment in advance.

For mass production: 50% deposit and 50% balance before shipment.

Q: What is the lead time of the products?

A:Samples in stock will be sent within 3 days after payment.

Two to Four weeks for mass production

Q:How long is the warranty period?

A:Generally the warranty period is one year. It depends on different products.

Q:What is the Product MOQ?

A:Different product has the different MOQ, please contact us sales for detailed information.

Q: What's your after-sale service?

A: If any problems, you will get our reply within 24 hours. Solution will be offered instantly by our professional technical team.

Q:Can you provide OEM service?

A:yes, we can provide both OEM and ODM service,can customize products according to the drawings you supply

Q: How can I trust your product quality?

A:The company has advanced the incoming inspection, on-line test and reliability test equipment and system, the company products through the ROHS,CE testing



Shenzhen ChengHao Optoelectronic Co., Ltd.



+86 755-27806536



add@chenghaolcm.com



chenghaolcd.com

7th floor, building C5, Hengfeng Industrial City, Hangcheng street, Bao'an District, Shenzhen