



## 1.77 Inch Colour Serial Lcd Module Sunlight Readable 128x160 Dots Tft St7735

### Our Product Introduction

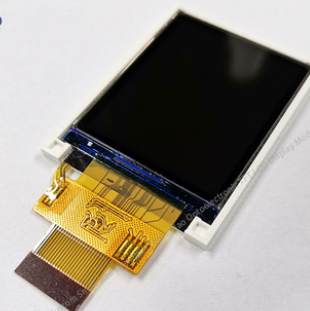
#### Basic Information

- Place of Origin: ShenZhen, China
- Brand Name: Chenghao/Oem
- Certification: ROHS ISO9001 CE
- Model Number: CH180QQ20A
- Minimum Order Quantity: 100 pcs
- Price: /
- Packaging Details: All the products are packed in right way to keep it safe. For small sizes of products we use tray + carton, For bigger sizes we use foam slot + carton. we also design packages according to customers' requirements
- Delivery Time: 7-15 working days
- Payment Terms: T/T
- Supply Ability: 300Kpcs/month



#### Product Specification

- Product Name: Colour Lcd Display Module
- Driver IC: ST7735S
- Module Size: 34.7(W)×46.7(H)×3.5(T) Mm
- Active Area: 28.032(W)×35.04(H) Mm
- Dot Pitch: 0.219(W)×0.219(H) Mm
- Interface: 8-bit 8080-series System Interface
- Operating Temperature: -20 ~ +70 °C
- Highlight: 1.77 inch serial lcd module,  
128x160 dots serial lcd module,  
st7735 lcd module tft



#### More Images



## Product Description

1.77 Inch Colour Lcd Display Module Sunlight Readable 128x160 Dots Tft Modules With ST7735

### 1. Specification

item	value
Type	TFT LCD
Display Size	1.77 inch
Supplier Type	Original manufacturer
Place of Origin	China
Model Number	CH180QQ20A
Brand Name	Chenghao
Outline Dimension	34.7(W)×46.7(H)×3.5(T) mm
Display area	28.032(W)×35.04(H) mm
Number of Pixel	128x160 dots
Pixel pitch	0.219(W)×0.219(H) mm
Pixel arrangement	RGB Vertical Stripe
Backlight	4pcs White LED
Operating Temperature	-20~70℃
Storage Temperature	-30~80℃
Contrast	500:1
color	16.2M/65k/262k (optional)

### 2. Description

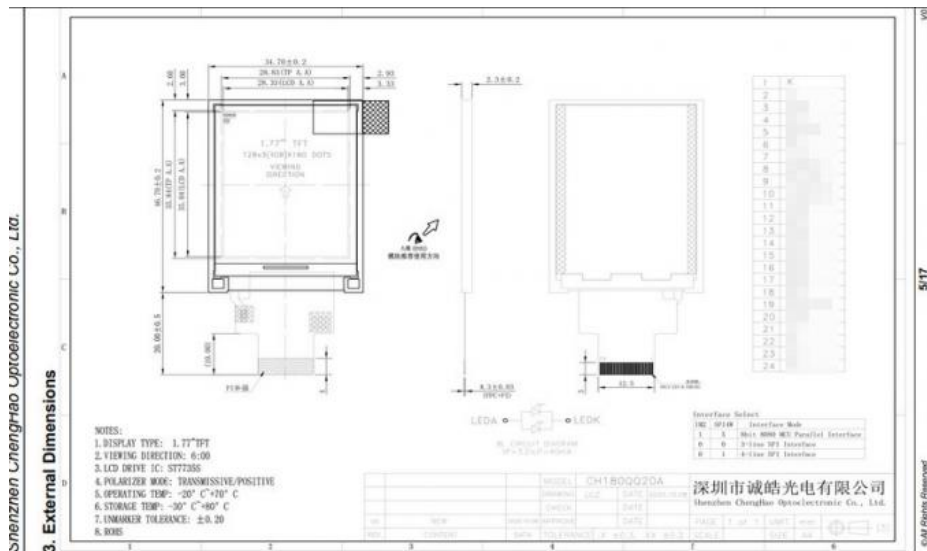
- \* CH180QQ20A is a Transmissive type color active matrix liquid crystal display (LCD).
- \* It is composed of a TFT LCD panel, driver IC, FPC, backlight
- \* It is 128x160 resolution TFT LCD module.
- \* Backlight with different brightness options from 100 - 1500cd/m2 are available.
- \* Specific touch panel can be designed & customized.
- \* Customize LCD Display including lcd backlight, brightness, FPC, interface, touch screen, etc.
- \* RoHS & REACH compliant.
- \* If you can't find a suitable one, contact us to get a recommendation.

### 3. Drawings

Notes:

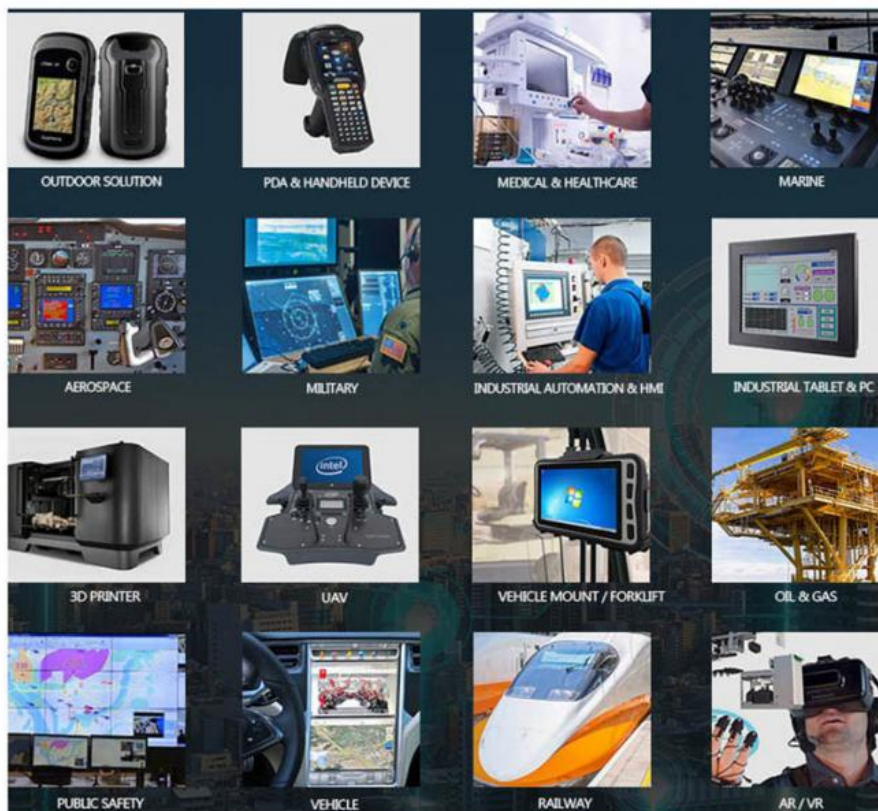
- (1) Display Type : 1.77" TFT
- (2) Viewing Direction : 6 o'clock
- (3) Lcd Drive IC : ST7735
- (4) Polarizer Mode : Transmissive/
- (5) Operating Temp : -20~70 °C

- (6) Storage Temp : -30~80 °C  
 (7) Unmarker Tolerance:  $\pm 0.20$   
 (8) Protection : ROHS



#### 4. Application

### Applications



#### 5. Our Service

- (1) Fully / Semi-automated production line ensure the best quality.
- (2) Custom Design, can specially meet your needs.
- (3) Fast Delivery ,about 20 days for lead time
- (4) Samples available on request; Small MOQ orders can be negotiated.
- (5) Provide best pre-sale and after-sale service to you.

#### 6. FAQ

A Q: When can i get the quotation?

A: We usually quote within 12 hours after we got your inquiry.

If it is very urgent, please call us or contact us via email, Skype or WhatsApp.

Q: What is your warranty?

A: We provide one year warranty.

Q: May i buy samples from you?

A: Yes! You are welcome to place sample order to test our Hight quality and service.

Q: How to place bulk order?

A: 1) Tell us model number, quantity, color and other special requirements.

2) Proforma Invoice will be made and sent to you for approval

3) Production will be arranged once get your payment or deposit.

4) Goods will be delivered as stated on the Proforma Invoice.

Q: How will you deliver my goods to me?

A: We provide as many shipping options as possible, such as DHL, UPS, FEDEX, TNT AND EMS to enable our customers get their goods

rapidly at door. We also ship by economick method such as air cargo and sea cargo, direct line, air mail according to customers' request.

Q: What about the quality of your product?

A: We provide unrivaled quality: very rigorous testing process for incoming quality control, input process quality control, and final quantiy control for every piece. We follow QC test procedure, and do 100% FQC to ensure your satisfication.

Q: Can you provide OEM service?

A: Yes! We can provide professional OEM service.

Q: Do you have any after-sales service?

A: Yes! Our productt has professional after-sales service dept. Follow up R.M.A. Items service and upload product fireware and app for you download.

If you have any technical questions with the goods, please feel freely to contact our technical support dept, or our sales directly.



**Shenzhen ChengHao Optoelectronic Co., Ltd.**



+86 755-27806536



add@chenghaolcm.com



chenghaolcd.com

7th floor, building C5, Hengfeng Industrial City, Hangcheng street, Bao'an District, Shenzhen