

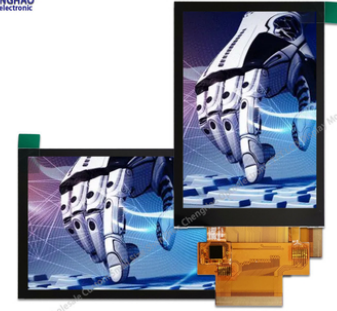


300cd/M2 RGB IPS LCD Panel CTP FPC 262k Ips Capacitive Touch Screen

Our Product Introduction

Basic Information

- Place of Origin: ShenZhen, China
- Brand Name: Chenghao/Oem
- Certification: ROHS ISO9001 CE
- Model Number: CH350HV40A-CT
- Minimum Order Quantity: 100 pcs
- Price: /
- Packaging Details: All the products are packed in right way to keep it safe. For small sizes of products we use tray + carton, For bigger sizes we use foam slot + carton. we also design packages according to customers' requirements
- Delivery Time: 7-15 working days
- Payment Terms: T/T
- Supply Ability: 300Kpcs/month



Product Specification

- Product Name: Custom 3.5 Thin Lcd Panel
- Model Size: 3.5 Inch
- Color: 262k
- Display Mode: Normally Black IPS, Transmissive
- Viewing: Free Viewing Angle
- Connection: Connector
- Pin Number: 50
- Interface: SPI / RGB
- Highlight: 300cd/m2 RGB IPS LCD Panel,
CTP FPC IPS LCD Panel,
262k Ips Capacitive Touch Screen



More Images



Product Description

1. Specification

Display type	3.5"TFT
Backlight tube	LED
Brightness (cd/m ²)	300
Backlight life (h)	>20,000
Contrast	800:1
Viewing angle (L/R/T/B)	80/80/80/80

2. Description

ChengHao Display model CH350HV40A-CT is a color active matrix thin film transistor (TFT) liquid crystal display (LCD) that uses amorphous silicon TFT as a switching device. This model is composed of a TFT LCD panel, a driving IC, a back-light, Capacitive Touch Panel and FPC.

This TFT LCD has a 3.5 (vertical screen) inch diagonally measured active display area with 320 horizontal by 480 vertical pixel .

The driver used for this project is the ILI9488 and can display 262K 65K / 16.7M colors by signal input. The driver is mounted on the glass and the interconnection via FPC including components to drive the display module. Support SPI / RGB Multi-interface.

In addition, FPC can also be customized according to customer requirements, such as modifying back-light and CTP structure, interface definition, etc.

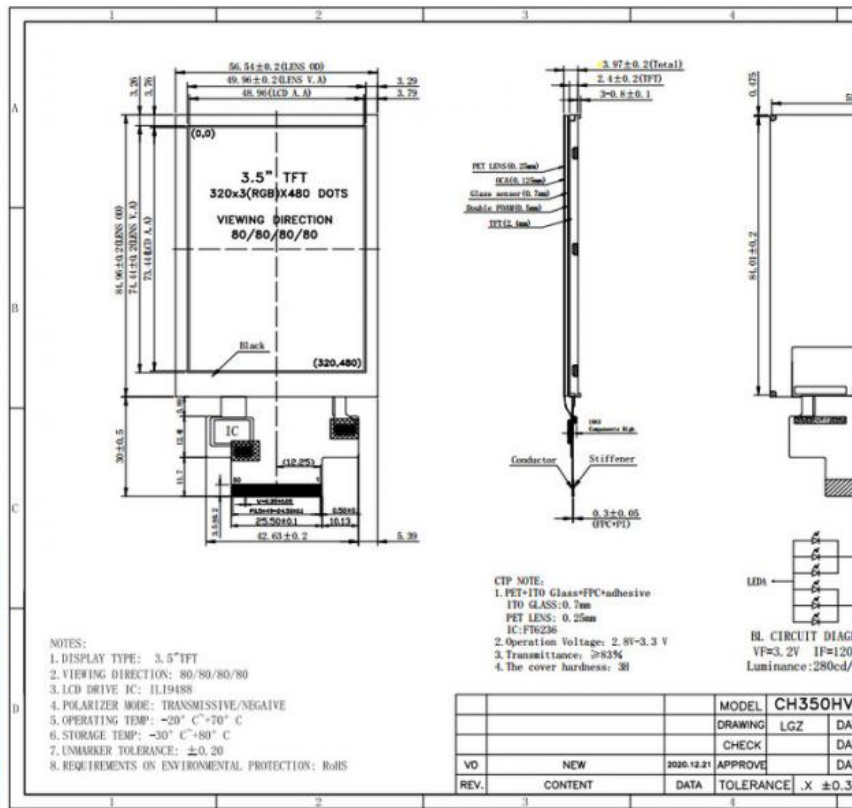
RoHS Compliance & Halogen Free

3. Drawings

Notes:

- (1) Display Type : 3.5 inch TFT+CTP
- (2) Viewing Direction : All Viewing Angle
- (3) Lcd Drive IC : ILI9488
- (4) Polarizer Mode : Transmissive/ Negative
- (5) Operating Temp : -20~70 °C
- (6) Storage Temp : -30~80 °C
- (7) Unmarker Tolerance: ± 0.20
- (8) Protection : ROHS

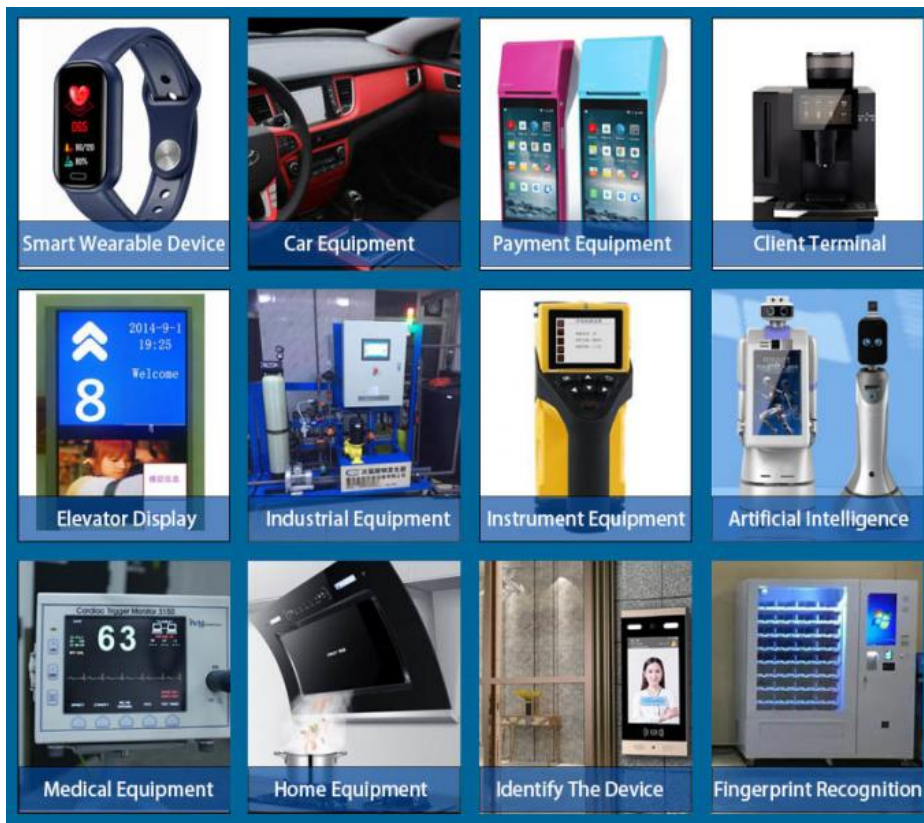
3. External Dimensions



4. Quick Detail

- * LCM name: Custom 3.5 Thin Lcd Panel 16 Bit RGB Interface 80/80/80/80 Ips Capacitive Touchscreen
- * Model: CH350HV40A-CT
- * Lcm Size.: 3.5 inch
- * With touch panel or not: Yes
- * Touch type: Capacitive / Resistive Touch Panel
- * Display Type: 3.5" TFT+CTP
- * Display colors: 262K (Optional)
- * Number of Dots: 320(RGB)*480 dots
- * TFT Dot Pitch : 0.153(W)×0.153(H) mm
- * Viewing Angle: ||Free Viewing Angle
- * Driver IC: ILI9488
- * Display mode: IPS/ Transmission/ NormallyBlack
- * Module size: 56.54(W)×84.96(H)×2.4(T) mm
- * TFT Active Area: 48.96(W)×73.44(H) mm
- * Luminance: 300cd/m²
- * Contrast: 800 : 1
- * Support Interface Type:
 - 4-lines_8bit SPI
 - 3-lines_9bit SPI
 - 8 bit 8080 system interface
 - 9 bit 8080 system interface
 - 16 bit 8080 system interface
 - 18 bit 8080 system interface
 - SPI +16-bit RGB interface
 - SPI +18-bit RGB interface
- * Pin Number: 50pins
- * Pin pitch: 0.3~0.4 mm
- * Input voltage: 3.2V
- * Backlight type and color: LED backlight/white
- Backlight: 6 LED parallel

5. Application



6. Our Service

1. We provide one-year product after-sales guarantee service to all customers who purchase our products.
2. For any technical problems encountered by customers in the process of testing or using our products, our technical team will provide customers with remote online technical support services at any time.
3. We are a factory-type supplier with ISO certification. Our products on sale have undergone strict quality inspection and testing before shipment, and have also passed CE/ROHS certification.
4. We have a professional after-sales service team, which can provide strong guarantee and logistical technical services for your orders.
5. Replacement within 30 days after the shipment of products from us due to products' problems.
6. We have long cooperation with many shipping companies and our export volume is large. The shipping companies can offer us good discounts.
7. All goods will be inspected and tested before shipment.
8. Customer's satisfactory is most important to us. If you have any problem or questions regarding our transaction, please contact us by Email. It will be responded within 24 hours.

8. FAQ

Q1. Who are we?

We are based in Guangdong China, start from 2015, sell to
 Western Europe (35.00%)
 Oceania (25.00%)
 North America (13.00%)
 South America (7.00%)
 Southeast Asia (7.00%)
 Northern Europe (7.00%)
 Southern Europe (4.00%)
 Domestic Market (2.00%).
 There are total about 30 people in our office.

Q2 How can we guarantee quality?

Always a pre-production sample before mass production;
 Always final inspection before shipment.

Q3. What can you buy from us?

Color TFT LCD, Touch Panel Modules, Pcap & Cover Glass, Monochrome LCD, Converter Board.

If you have more question , Please contact us now, we look forward to communicating with you !





+86 755-27806536



add@chenghaolcm.com



chenghaolcd.com

7th floor, building C5, Hengfeng Industrial City, Hangcheng street, Bao'an District, Shenzhen