



## 3.5 Inch 320x480 IPS TFT Display Module With Capacitive Touch Panel

### Our Product Introduction

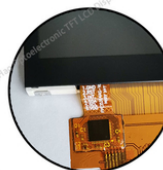
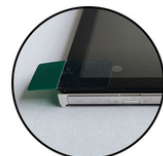
#### Basic Information

- Place of Origin: ShenZhen, China
- Brand Name: Chenghao/Oem
- Certification: ROHS ISO9001 CE
- Model Number: CH350HV40A-CT
- Minimum Order Quantity: 100 pcs
- Price: Negotiation
- Packaging Details: All the products are packed in right way to keep it safe. For small sizes of products we use tray + carton, For bigger sizes we use foam slot + carton. we also design packages according to customers' requirements
- Delivery Time: 7-15 working days
- Payment Terms: T/T
- Supply Ability: 300Kpcs/month



#### Product Specification

- Product Name: 3.5 Inch Small TFT Display Module
- LCD Type: 3.5" TFT With CTP
- Dot Arrangement: 320(RGB)×480 Dots
- Color Filter Array: RGB Vertical Stripe
- Display Mode: IPS/ Transmission/ NormallyBlack
- Viewing Direction: 80/80/80/80
- TFT Driver IC: ILI9488
- Back Light: 280 Cd/m2
- Highlight: ILI9488 Small LCD Touch Screen,  
IPS Transmission Small LCD Touch Screen,  
CTP SPI TFT Lcd Panel



## Product Description

### 1. Specification

ITEM	STANDARD VALUES	UNITS
LCD type	3.5"TFT	--
Dot arrangement	320(RGB)× 480	dots
Driver IC	ILI9488	--
Module size	56.54(W)×84.96(H)×3.97(T)	mm
Active area	48.96(W)×73.44(H)	mm
Dot pitch	0.153(W)×0.153(H)	mm
Operating temperature	- 20 ~ + 70	°C
Storage temperature	- 30 ~ + 80	°C
Back Light	6 White LED In Paralle	--
Weight	TBD	g

### 2. Description

ChengHao Display model CH350HV40A-CT is 3.5 inch IPS TFT Display Module with Capacitive touch panel. This model is composed of a TFT LCD panel, a driving IC, a back-light, Capacitive Touch Panel and FPC.

This TFT LCD has a 3.5 ( vertical screen ) inch diagonally measured active display area with 320 horizontal by 480 vertical pixel .

The driver used for this project is the ILI9488 and can display 262K 65K / 16.7M colors by signal input. The driver is mounted on the glass and the interconnection via FPC including components to drive the display module. Support SPI / RGB Multi-interface.

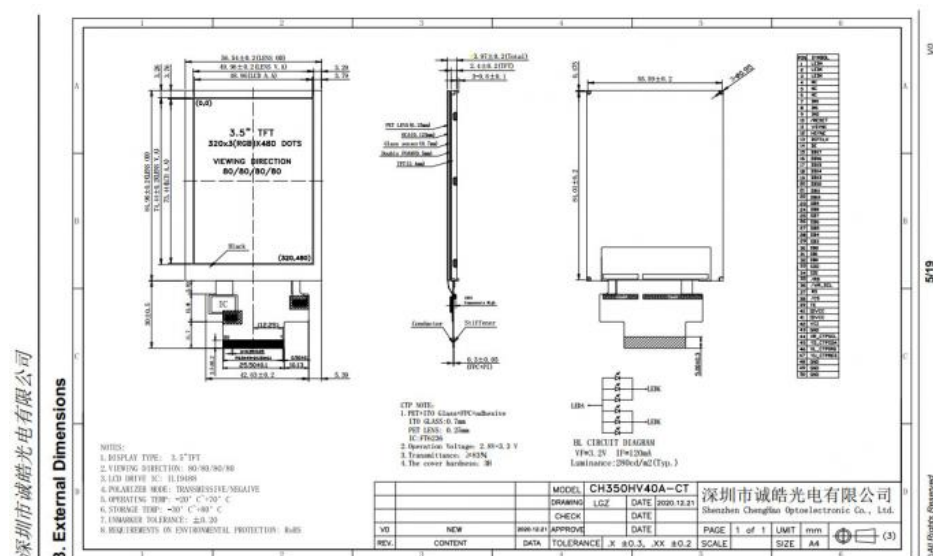
In addition, FPC can also be customized according to customer requirements, such as modifying back-light and CTP structure, interface definition, etc.

RoHS Compliance & Halogen Free.

### 3. Drawings

Notes:

- (1) Display Type : 3.5 inch TFT+CTP
- (2) Viewing Direction : All Viewing Angle
- (3) Lcd Drive IC : ILI9488
- (4) Polarizer Mode : Transmissive/ Negative
- (5) Operating Temp : -20~70 °C
- (6) Storage Temp : -30~80 °C
- (7) Unmarker Tolerance: ±0.20
- (8) Protection : ROHS



### 4. Quick Detail

- \* LCM name: 3.5 Inch 320x480 Resolution IPS TFT Display Screen
- \* Model: CH350HV40A-CT
- \* Lcm Size.: 3.5 inch
- \* With touch panel or not: Yes
- \* Touch type: Capacitive / Resistive Touch Panel ( Optional )
- \* Display Type: 3.5"TFT
- \* Display colors: 262K (Optional)
- \* Number of Dots: 320\*480 dots

- \* TFT Dot Pitch : 0.153×0.153 mm
- \* Viewing Angle: 80/80/80/80
- \* Driver IC: ILI9488
- \* Display mode: IPS/ Transmission/ NormallyBlack
- \* Module size: 56.54×84.96×2.4mm
- \* TFT Active Area: 48.96×73.44mm
- \* Luminance: 300 Nits
- \* Contrast: 800 : 1
- \* Support Interface Type:
- 4-lines\_8bit SPI
- 3-lines\_9bit SPI
- 8 bit 8080 system interface
- 9 bit 8080 system interface
- 16 bit 8080 system interface
- 18 bit 8080 system interface
- SPI +16-bit RGB interface
- SPI +18-bit RGB interface
- \* Pin Number: 50 pins
- \* Pin pitch: 0.3~0.4 mm
- \* Input voltage: 3.2V
- \* Backlight type and color: LED backlight/white
- Backlight: 6 LED parallel

## 5. Application



## 6. Our Service

- (1) Fully / Semi-automated production line ensure the best quality.
- (2) Custom Design,can specially meet your needs.
- (3) Fast Delivery ,about 20 days for lead time
- (4) Samples available on request; Small MOQ orders can be negotiated.
- (5) Provide best pre-sale and after-sale service to you.

## 7. FAQ

Q1. Who are we?

We are based in Guangdong China, start from 2015,sell to  
 WesternEurope ( 35.00% )  
 Oceania ( 25. 00% )  
 North America ( 13.00% )  
 SouthAmerica ( 7.00% )

Southeast Asia ( 7.00% )  
Northern Europe ( 7.00% )  
Southern Europe ( 4.00% )  
Domestic Market ( 2.00% ).  
There are total about 30 people in our office.

Q2 How can we guarantee quality?

Always a pre-production sample before mass production;  
Always final Inspection before shipment.

Q3.What can you buy from us?

Color TFT LCD,Touch Panel Modules,Pcap & Cover Glass,Monochrome LCD, Converter Board.

Q4. Why should you buy from us not from other suppliers?

CHENGHAO LCD is a national high-tech enterprise which established in year 2016. We are committed to research and development, manufacturing and sales of LCD screens, touch screens and comprehensive display solutions.

Q5. What services can we provide?

Accepted Delivery Terms: FOB,CIF,EXW,FCA,DDP,Express Delivery;

Accepted Payment Currency:USD,CNY;

Accepted Payment Type: T/T,L/C,MoneyGram,Credit Card,PayPal,Western Union,Cash;

Language Spoken:English,Chinese

If you have more question , Please contact us now, we look forward to communicating with you !



**Shenzhen ChengHao Optoelectronic Co., Ltd.**



+86 755-27806536



add@chenghaolcm.com



chenghaolcd.com

7th floor, building C5, Hengfeng Industrial City, Hangcheng street, Bao'an District, Shenzhen