

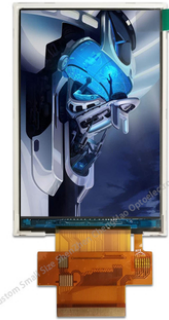


FPC Transmissive IPS LCD Display 3.5 Inch Tft I80 System 16 Bit 262k

Our Product Introduction

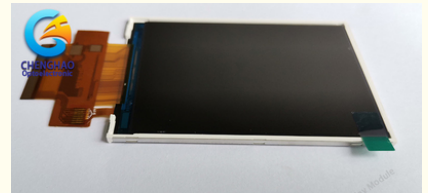
Basic Information

- Place of Origin: ShenZhen, China
- Brand Name: Chenghao/Oem
- Certification: ROHS ISO9001 CE
- Model Number: CH350HV40A
- Minimum Order Quantity: 100 pcs
- Price: /
- Packaging Details: All the products are packed in right way to keep it safe. For small sizes of products we use tray + carton, For bigger sizes we use foam slot + carton. we also design packages according to customers' requirements
- Delivery Time: 7-15 working days
- Payment Terms: T/T
- Supply Ability: 300Kpcs/month



Product Specification

- Product Name: 3.5 Inch Tft Color Display
- Color: 65k/262k/16.7M (Optional)
- Display Mode: Normally Black IPS, Transmissive
- Viewing: Free Viewing Angle
- Interface: 8-/ 9-/16-/18-bit8080system Interface
- Back Light: 6 White LED Inparallel
- Highlight: FPC Transmissive IPS LCD Display , I80 System IPS LCD Display , 262k IPS LCD Panel



More Images



Product Description

1. Specification

Part No.	CH350HV40A
Size	3.5 inch
Resolution	320*480
Outline Dimension	56.54(W)×84.96(H)×2.4(T) mm
Active Area	48.96(W)×73.44(H) mm
Interface	4-lines_8bit / 3-lines_9bit SPI
IC	ILI9488
FPC	50 Pin
Working temperature	-20°C ~ 70°C
Storage temperature	-20°C ~ 70°C
Delivery Time	10days

2. Description

ChengHao Display model CH350HV40A is a color active matrix thin film transistor (TFT) liquid crystal display (LCD) that uses amorphous silicon TFT as a switching device. This model is composed of a TFT LCD panel, a driving IC, a back-light, and FPC.

This TFT LCD has a 3.5 (vertical screen) inch diagonally measured active display area with 320 horizontal by 480 vertical pixel .

The driver used for this project is the ILI9488 and can display 262K 65K / 16.7M colors by signal input. The driver is mounted on the glass and the interconnection via FPC including components to drive the display module. Support 4-lines_8bit / 3-lines_9bit SPI / 8-/ 9-/16-/18-bit 8080system interface / SPI +16-/18-bit RGB interface.

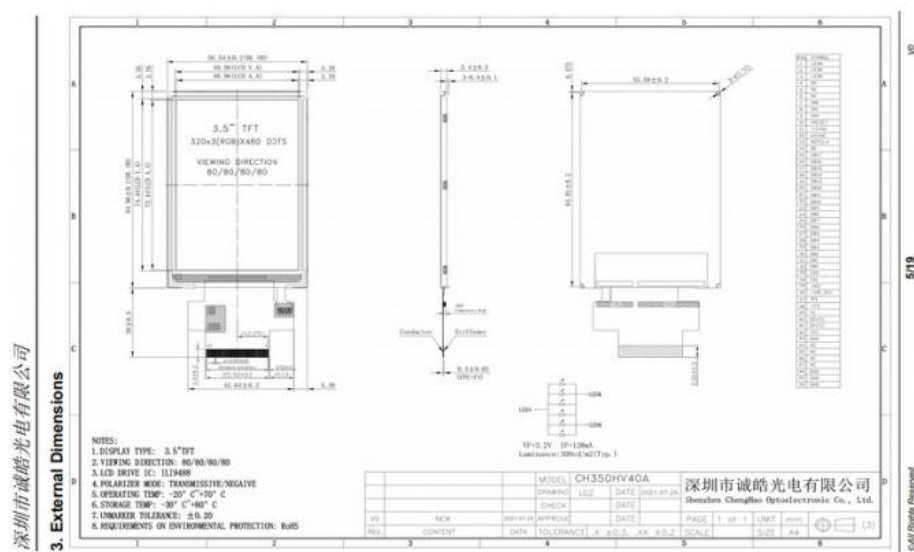
In addition, FPC can also be customized according to customer requirements, such as modifying back-light and CTP structure, interface definition, etc.

RoHS Compliance & Halogen Free.

3. Drawings

Notes:

- (1) Display Type : 3.5 inch TFT
- (2) Viewing Direction : All Viewing Angle
- (3) Lcd Drive IC : ILI9488
- (4) Polarizer Mode : Transmissive/ Negative
- (5) Operating Temp : -20~70 °C
- (6) Storage Temp : -30~80 °C
- (7) Unmarker Tolerance: ±0.20
- (8) Protection : ROHS



4. Quick Detail

- * LCM name: 3.5 Inch Tft Color Display Replacement Lcd Screen Wholesale Price I80 System 16 Bit Interface
- * Model: CH350HV40A
- * Lcm Size.: 3.5 inch
- * With touch panel or not: No

- * Touch type: Capacitive / Resistive Touch Panel
- * Display Type: 3.5"TFT
- * Display colors: 16.7M (Optional)
- * Number of Dots: 320(RGB)*480 dots
- * TFT Dot Pitch : 0.153(W)*0.153(H) mm
- * Viewing Angle: 80/80/80/80
- * Driver IC: ILI9488
- * Display mode: IPS/ Transmission/ NormallyBlack
- * Module size: 56.54(W)*84.96(H)*2.4(T) mm
- * TFT Active Area: 48.96(W)*73.44(H) mm
- * Luminance: 300cd/m2
- * Contrast: 800 : 1
- * Support Interface Type:
- 4-lines_8bit SPI
- 3-lines_9bit SPI
- 8 bit 8080 system interface
- 9 bit 8080 system interface
- 16 bit 8080 system interface
- 18 bit 8080 system interface
- SPI +16-bit RGB interface
- SPI +18-bit RGB interface
- * Pin Number: 50pins
- * Pin pitch: 0.3~0.4 mm
- * Input voltage: 3.2V
- * Backlight type and color: LED backlight/white
- Backlight: 6 LED parallel

5. Application

Products are widely used in general communications, household appliances, industrial control, medical equipment, POS machines, instruments, meters, GPS navigation, digital photo frames, netbooks, financial electronics, communication electronics, consumer electronics, information appliances, culture, education, sports and entertainment, etc. field. Such as attendance machine, fingerprint device, access control machine, stock machine, walkie-talkie, video doorbell, learning machine, point reading machine, GPS navigator, and so on .



6. Our Service

- (1) Fully / Semi-automated production line ensure the best quality.
- (2) Custom Design, can specially meet your needs.
- (3) Fast Delivery ,about 20 days for lead time
- (4) Samples available on request; Small MOQ orders can be negotiated.
- (5) Provide best pre-sale and after-sale service to you.

8. FAQ

Q1. Who are we?

We are based in Guangdong China, start from 2015, sell to
Western Europe (35.00%)
Oceania (25.00%)
North America (13.00%)
South America (7.00%)
Southeast Asia (7.00%)
Northern Europe (7.00%)
Southern Europe (4.00%)
Domestic Market (2.00%).
There are total about 30 people in our office.

Q2 How can we guarantee quality?

Always a pre-production sample before mass production;
Always final inspection before shipment.

Q3. What can you buy from us?

Color TFT LCD, Touch Panel Modules, Pcap & Cover Glass, Monochrome LCD, Converter Board.

Q4. Why should you buy from us not from other suppliers?

CHENGHAO LCD is a national high-tech enterprise which established in year 2016. We are committed to research and development, manufacturing and sales of LCD screens, touch screens and comprehensive display solutions.

Q5. What services can we provide?

Accepted Delivery Terms: FOB, CIF, EXW, FCA, DDP, Express Delivery;
Accepted Payment Currency: USD, CNY;
Accepted Payment Type: T/T, L/C, MoneyGram, Credit Card, PayPal, Western Union, Cash;
Language Spoken: English, Chinese

If you have more question , Please contact us now, we look forward to communicating with you !



Shenzhen ChengHao Optoelectronic Co., Ltd.



+86 755-27806536



add@chenghaolcm.com



chenghaolcd.com

7th floor, building C5, Hengfeng Industrial City, Hangcheng street, Bao'an District, Shenzhen