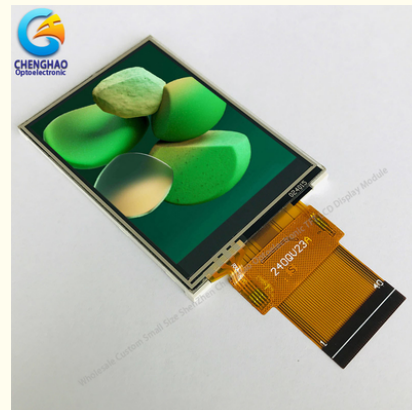


## RTP Tft Lcd Touch Screen 300cd/M2 240x320 Spi 250nits With ST7789V

### Our Product Introduction

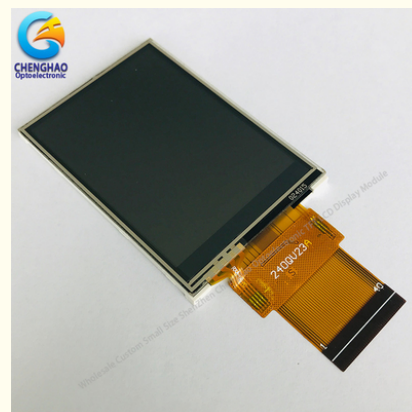
#### Basic Information

- Place of Origin: ShenZhen, China
- Brand Name: Chenghao/Oem
- Certification: ROHS ISO9001 CE
- Model Number: CH240QV23A-T
- Minimum Order Quantity: 100 pcs
- Price: /
- Packaging Details: All the products are packed in right way to keep it safe. For small sizes of products we use tray + carton, For bigger sizes we use foam slot + carton. we also design packages according to customers' requirements
- Delivery Time: 7-15 working days
- Payment Terms: T/T
- Supply Ability: 300Kpcs/month

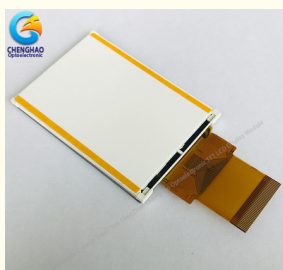


#### Product Specification

- Product Name: 240x320 Tft Lcd Touch Screen
- Module Type: 2.4" TFT + RTP
- Display Mode: TN/Transmissive/Normally White
- Number Of Dots: 240\*3(RGB)\*320
- Viewing Direction: 6 O'clock
- Module Size: 42.72(W)\*60.26(H)\*3.35(T)mm
- TFT Active Area: 36.72(W)\*48.96(H)mm
- Interface: SPI MCU SPI+RGB
- Highlight: RTP Tft Lcd Touch Screen, 300cd/M2 Tft Lcd Touch Screen, 250nits Spi Lcd Display Module



#### More Images



## Product Description

### 1. Specification

ITEM	STANDARD VALUES	UNITS
MODEL NO.	CH240QV23A-T	--
Module type	2.4"TFT + RTP	--
Display Mode	TN/Transmissive/Normally white	--
Number of Dots	240*3(RGB)*320	dots
Viewing Direction	6 o'clock	--
Module size	42.72(W)*60.26(H)*3.35(T)	mm
TFT Active area	36.72(W)*48.96(H)	mm
Interface	SPI,MCU,SPI+RGB	--
Luminance	300	cd/m2

### 2. Description

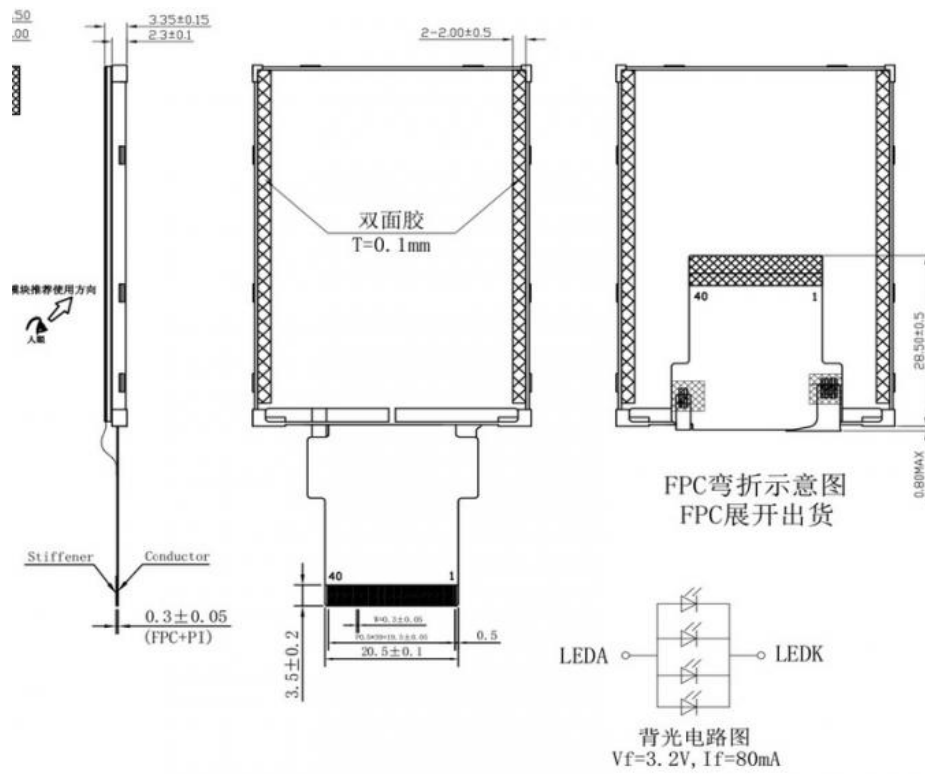
Wholesale Custom 2.4 Tft Spi 240x320 Tft Lcd Touch Screen With ST7789V

- \* CH240QV23A-T is a Transmissive type color active matrix liquid crystal display .
- \* It is composed of a TFT LCD panel, driver IC, FPC, backlight, RTP.  
TFT LCD panel : Tn Tft  
Driver IC : ST7789V  
FPC : 40 Pin  
Backlight |: 300 cd/m2  
RTP = Resistive Touch Panel
- \* 2.4 inch color screen display
- \* It is 240 (RGB)x320 resolution TFT LCD module, clear display
- \* RoHS & REACH compliant.
- \* Support CE / ROHS certification
- \* Interface :  
4-lines\_8bit / 3-lines\_9bit SPI  
8-/9-/16-/18-bit8080system interface  
6-/16-/18-bitRGB interface
- \* Military-grade process standards, long-term stable work
- \* Provide underlying driver technical support
- \* Long term stable production and guaranteed supply
- \* Backlight with different brightness options from 200 - 1500cd/m2 are available.
- \* Specific touch panel can be designed & customized.
- \* Support customized service! Customizable content includes FPC/backlight brightness/installation of touch panel, etc.

### 3. Drawings

Notes:

- (1) Display Type : 2.4inch TFT + RTP
- (2) Viewing Direction : 6:00
- (3) Lcd Drive IC : ST7789V
- (4) Polarizer Mode : Transmissive/ Positive
- (5) Operating Temp : -20~70 °C
- (6) Storage Temp : -30~80 °C
- (7) Unmarker Tolerance: ±0.20
- (8) Protection : ROHS



#### 4. Application



#### 5. Our Service

1. We provide one-year product after-sales guarantee service to all customers who purchase our products.
2. For any technical problems encountered by customers in the process of testing or using our products, our technical team will provide customers with remote online technical support services at any time.
3. We are a factory-type supplier with ISO9001 certification.
5. Our products on sale have undergone strict quality inspection and testing before shipment, and have also passed CE/ROHS certification.
6. We have a professional after-sales service team, which can provide strong guarantee and logistical technical services for your orders.
7. Replacement within 30 days after the shipment of products from us due to products' problems.

8. We have long cooperation with many shipping companies and our export volume is large. The shipping companies can offer us good discounts.

8. All goods will be inspected and tested before shipment.

9. Customer's satisfactory is most important to us. If you have any problem or questions regarding our transaction. Please contact us by Email. It will be responded within 24 hours.

## 6. FAQ

Q1: Do you accept customization displays and touch screens?

A: Sure, you can customization the FPC, Backlight and the touch screen.

Q2: What type of interface is your display screen?

A: Small sized of displays generally support SPI, MCU, RGB, MIPI. Medium sized displays generally support LVDS, MIPI, EDP. Different specifications use different interfaces.

Q3: Do you used capacitive touch screen or resistive touch screen.

A: We have capacitive touch screen and resistive touch screen .

Q4: What is your sample policy?

A: If there is stock, you can sample at any time, if there is no stock, it will take some time, and then wait for the materials to come back to sample. But the customer needs to pay the sample fee and express fee.

Q5: How long is your lead time for mass production?

A: It takes about 20 - 45 working days for mass production, depending on the model and order quantity.

Q6: How to ensure long-term stable delivery?

A: First, we will recommend products that can be delivered for a long time to customers, and second, we will have a large number of stocks in advance for a long time.

Q7: What is your mode of payment for mass production?

A: Generally, after receiving 50%-100% deposit from customers, they begin to prepare materials. Delivery is about 5 working days after receipt of the final payment.

Q8: Will you inspect the goods before delivery?

A: Yes, we'll ship the goods after 100% inspection.

Q9: How long is your warranty period?

A: We guarantee the quality for one year.



**Shenzhen ChengHao Optoelectronic Co., Ltd.**



+86 755-27806536



add@chenghaolcm.com



chenghaolcd.com

7th floor, building C5, Hengfeng Industrial City, Hangcheng street, Bao'an District, Shenzhen