



SPI Industrial LCD Display Monitor Transmissive 24 Bit RGB 300cd/m2

Our Product Introduction

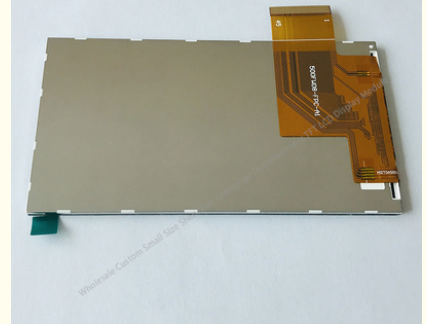
Basic Information

- Place of Origin: ShenZhen, China
- Brand Name: Chenghao/Oem
- Certification: ROHS ISO9001 CE
- Model Number: CH500FW08A
- Minimum Order Quantity: 100 pcs
- Price: /
- Packaging Details: All the products are packed in right way to keep it safe. For small sizes of products we use tray + carton, For bigger sizes we use foam slot + carton. we also design packages according to customers' requirements
- Delivery Time: 7-15 working days
- Payment Terms: T/T
- Supply Ability: 300Kpcs/month

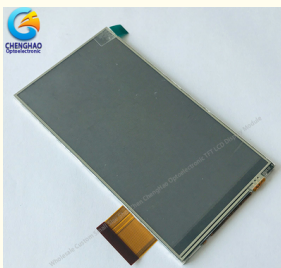


Product Specification

- Product Name: 5 Inch Industrial LCD Display Monitors
- Resolution: 480*3(RGB)*854
- Outline Dimension: 66.1(W)*120.4(H)*2.9(T) Mm
- Luminance: 300cd/m2
- Backlight Type: White LED
- Interface: 3 Line SPI + 24bit RGB Interface
- TFT Dot Pitch: 0.12825(W)*0.12825(H)mm
- Highlight: **SPI Industrial LCD Display Monitor, Transmissive Industrial LCD Display Monitor, 300cd/M2 Ips Lcd Screen**



More Images



Product Description

1. Specification

Part No.	CH500FW08A
Size	5.0 inch
Resolution	480*854 dots
Outline Dimension	66.1(W)*120.4(H)*2.9(T) mm
Active Area	61.56(W)*109.5255(H)mm
Interface	3 line SPI + 24bit RGB Interface
IC	JD9161 or COMPATIBLE
FPC	45 PIN
Working temperature	-20°C ~ 70°C
Storage temperature	-20°C ~ 70°C

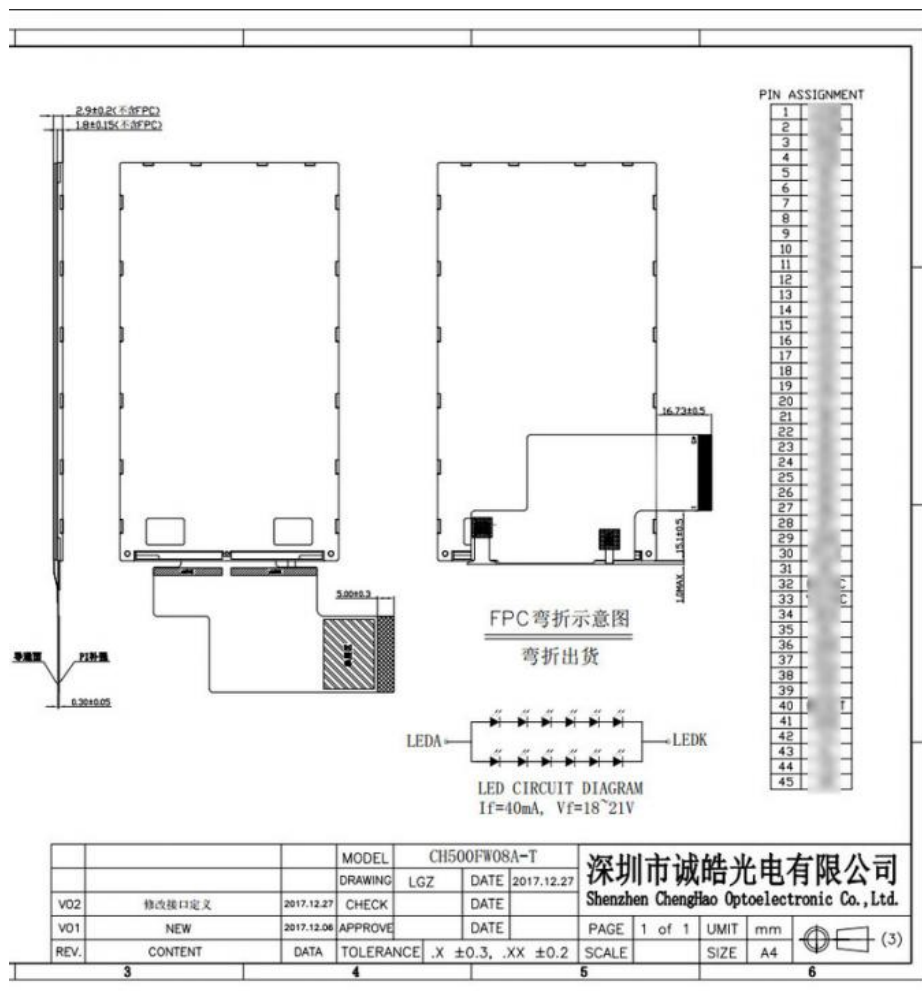
2. Quick Detail

- * LCD name: 5 Inch Industrial LCD Display Monitors 24bit RGB Interface Ips Lcd Screen Display
- * Part No.: CH500FW08A
- * Size.: 5 inch
- * Display type: 5"TFT
- * Display colors: 16.7M
- * Resolution (pixels): 480(RGB)*854 dots
- * Pixel pitch: 0.12825(W)*0.12825(H)mm
- * Viewing direction: 80/80/80/80
- * Controller IC: JD9161 or COMPATIBLE
- * Display mode: Transmissive / Normally Black / IPS
- * Overall size: 66.1(W)*120.4(H)*2.9(T)mm
- * Active Area: 61.56(W)*109.5255(H)mm
- * Luminance: 300nits
- * Contrast: 800 : 1
- * Interface type: 3 line SPI + 24bit RGB Interface
- * Pin NO.: 45pins
- * Pin pitch: 0.5mm
- * Connecting type: Connector type
- * Backlight type and color: LED backlight / white
- * LED Life span: 20000h
- * With touch panel: Yes
- * Touch Panel type: Resistive Touch Panel

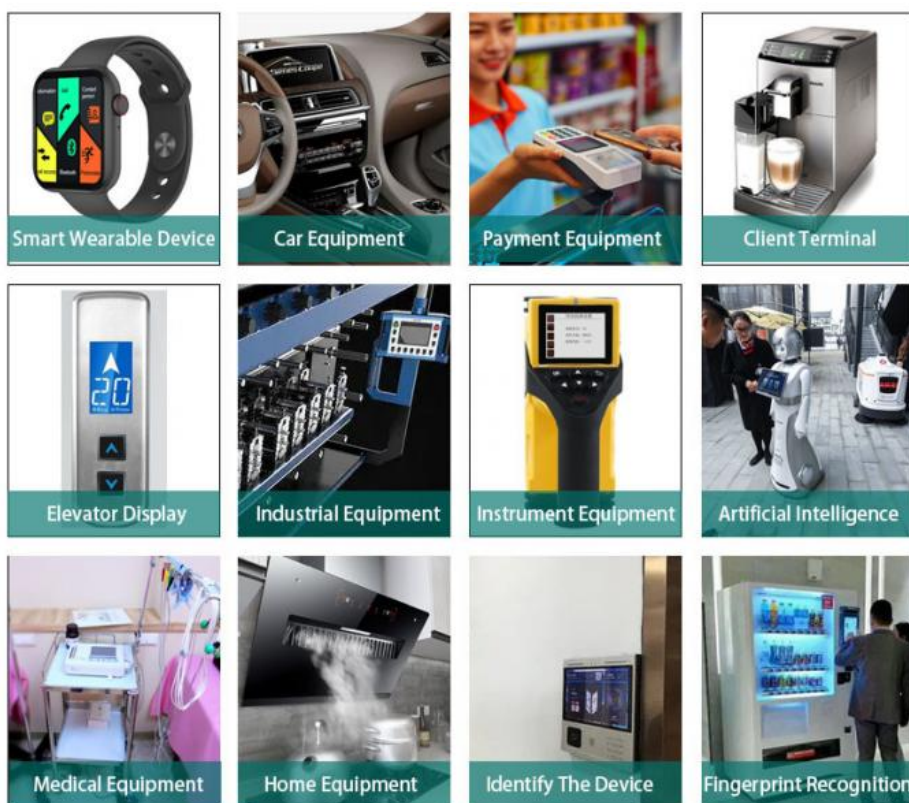
3. Drawings

Notes:

- (1) Display Type : 5" TFT
- (2) Viewing Direction : 80/80/80/80
- (3) Lcd Drive IC : JD9161 or COMPATIBLE
- (4) Polarizer Mode : Transmissive/ negative
- (5) Operating Temp : -20~70 °C
- (6) Storage Temp : -30~80 °C
- (7) Unmarker Tolerance: ±0.20
- (8) Protection : ROHS



4. Application



5. Our Service

1. Capability to control production cost & material purchase
2. Stable QC capability

3. Strong R&D capability
4. Rapid response to the requirements of customers & market

6. Products Quality Assurance

(1) High-quality raw material supplier :
after-sales guarantee and long-term stable supplier, LCD panel and Driver IC made of A-regulated raw materials.
(2) Other materials:
such as polarizers, backlight film materials, etc. We also use brand new A-regulated raw materials
(3) Strict quality control:
Through rate up to 98.5%, Customer online defect rate as low as 0.3%.
Inspection is done in FOG==>LCM==>LCM+RTP/CTP==> production online inspection ==>Q.C inspection==>aging test 4 hours with load in 60 °C special room (as option)==>OQC.
A product must pass 5 tests before shipment: incoming inspection, 100% online inspection, QC on-site inspection, aging test and OQC inspection, etc.

7. FAQ

Q1: Are you manufacturer ?
A: Yes, we are manufacturer.
Q2: How long is your delivery time?
A: Normally 3-5 working days after payment; Special requirement orders, delivery time is negotiable.
Q3: If the products can't work after receiving it, what should I do?
A: We will replace new items for you at once and then we make the judgement for the issue.
Q4: Do you accept OEM design?
A: Yes, we do. We can design according to your requirement, MOQ usually 100-1000.
Q5: Do you accept pay 30% in advance?
A: Yes, we do. We can start to prepare your goods when receive 30% payment, and send them after get the rest 70% payment.
Q6: What payment terms you accept?
A: We accept Paypal, T/T, Western Union, Wechat, Alipay, in Cash (RMB or USD).



Shenzhen ChengHao Optoelectronic Co., Ltd.



+86 755-27806536



add@chenghaolcm.com



chenghaolcd.com

7th floor, building C5, Hengfeng Industrial City, Hangcheng street, Bao'an District, Shenzhen