



FPC RGB High Brightness LCD Display 1024x600 7 Inch Ultra Thin 600cd/M2

Our Product Introduction

Basic Information

- Place of Origin: ShenZhen, China
- Brand Name: Chenghao/Oem
- Certification: ROHS ISO9001 CE
- Model Number: CH700WS10C
- Minimum Order Quantity: 100 pcs
- Price: /
- Packaging Details: All the products are packed in right way to keep it safe. For small sizes of products we use tray + carton, For bigger sizes we use foam slot + carton. we also design packages according to customers' requirements
- Delivery Time: 7-15 working days
- Payment Terms: T/T
- Supply Ability: 300Kpcs/month



Product Specification

- Product Name: High Brightness LCD Display
- Number Of Dots: 1024x600
- Contrast: 800:1
- Product Size: 7 Inch
- Overall Size: 164.9(W)×100.0(H)×3.5(T)mm
- Active Area: 154.21(W)×85.92(H)mm
- Highlight: FPC RGB High Brightness LCD Display,
600cd/M2 High Brightness LCD Display,
1024x600 IPS LCD Panel



Product Description

1. Specification

ITEM	STANDARD VALUES	UNITS
Part No	CH700WS10C	--
Number of Dots	1024x600	dots
Viewing Direction	80/80/80/80	--
Product Size	7	inch
Overall Size	16.49×10.0×0.35	cm
Active Area	15.421×8.521	cm
TFT Dot Pitch	0.01506(W)×0.01432	cm
Interface	RGB	--
Contrast	800:1	--
Backlight	600	cd/m2

2. Description

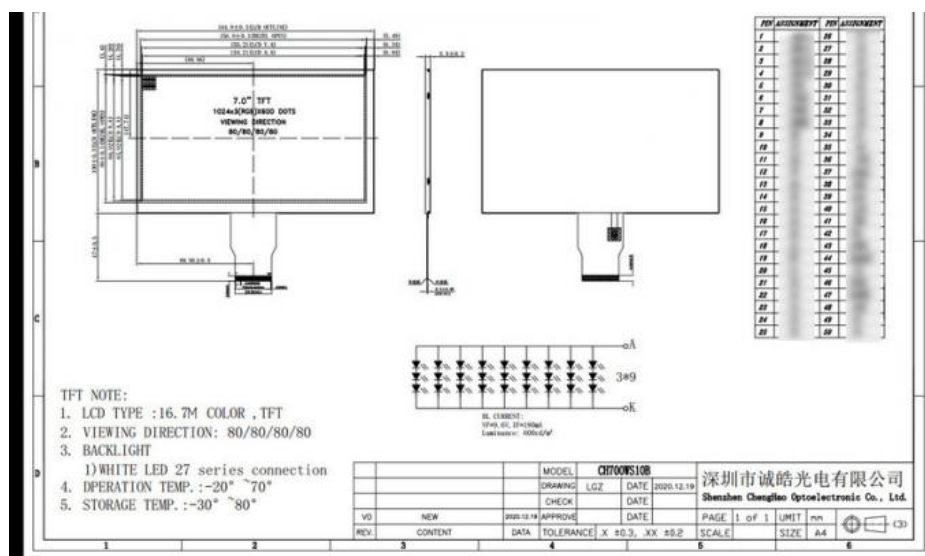
- * CH700WS10C is a Transmissive type color active matrix liquid crystal display (LCD).
- * This model is composed of a TFT LCD panel, a driving IC, a high brightness back-light and FPC.
- * 7 inch color screen display
- * It is 1024 (RGB) x 600 Dots (1024 horizontal by 600 vertical pixel) TFT LCD module, clear display .
- * CH700WS10C has a high backlight of 600 nits, and has the function of displaying in sunlight . Backlight with different brightness options from 200 - 1500nits are available.
- * RoHS & REACH compliant.
- * Using 24-bit Parallel RGB Interface
- * Provide a rich sample program
- * Military-grade process standards, long-term stable work
- * Provide underlying driver technical support
- * Long term stable production and guaranteed supply
- * Specific touch panel can be designed & customized.
- * Support customized service! Customizable content includes FPC/backlight brightness/installation of touch panel, etc.

In addition, if CH700WS10C does not meet your project needs, we also have many 7-inch TFT LCD modules similar to CH700WS10C, please contact our customer service to get them.

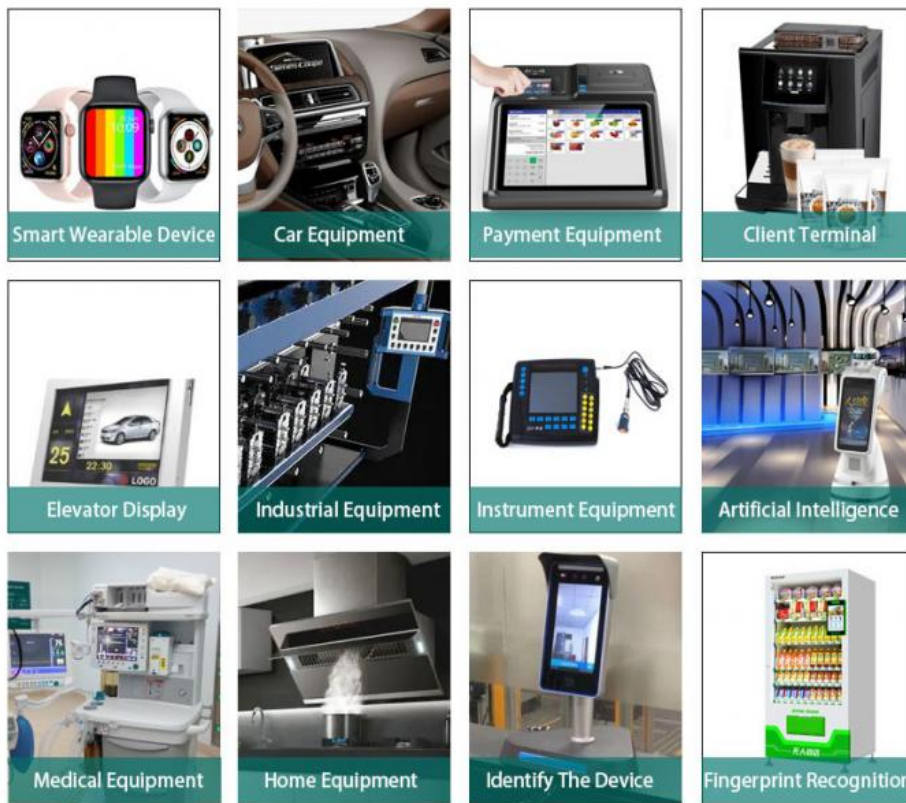
3. Drawings

Notes:

- (1) Display Type : 7" TFT
- (2) Viewing Direction : Free Viewing Angle
- (3) Lcd Drive IC : &&
- (4) Polarizer Mode : Transmissive/ negative
- (5) Operating Temp : -20~70 °C
- (6) Storage Temp : -30~80 °C
- (7) Unmarker Tolerance: ±0.20
- (8) Protection : ROHS



4. Application



5. Our Service

1. We provide one-year product after-sales guarantee service to all customers who purchase our products.
2. For any technical problems encountered by customers in the process of testing or using our products, our technical team will provide customers with remote online technical support services at any time.
3. We are a factory-type supplier with ISO certification. Our products on sale have undergone strict quality inspection and testing before shipment, and have also passed CE/ROHS certification.
4. We have a professional after-sales service team, which can provide strong guarantee and logistical technical services for your orders.
5. Replacement within 30 days after the shipment of products from us due to products' problems.
6. We have long cooperation with many shipping companies and our export volume is large. The shipping companies can offer us good discounts.
7. All goods will be inspected and tested before shipment.
8. Customer's satisfactory is most important to us. If you have any problem or questions regarding our transaction. Please contact us by Email. It will be responded within 24 hours.

6. Products Quality Assurance

(1) High-quality raw material supplier :
after-sales guarantee and long-term stable supplier, LCD panel and Driver IC made of A-regulated raw materials.

(2) Other materials:
such as polarizers, backlight film materials, etc. We also use brand new A-regulated raw materials

(3) Strict quality control:
Through rate up to 98.5%, Customer online defect rate as low as 0.3%.
Inspection is done in FOG==>LCM==>LCM+RTP/CTP==> production online inspection ==>Q.C inspection==>aging test 4 hours with load in 60 °C special room (as option)==>OQC.
A product must pass 5 tests before shipment: incoming inspection, 100% online inspection, QC on-site inspection, aging test and OQC inspection, etc.

7. FAQ

- Q1: Are you manufacturer ?
A: Yes, we are manufacturer.
- Q2: How long is your delivery time?
A: Normally 3-5 working days after payment; Special requirement orders, delivery time is negotiable.
- Q3: If the products can't work after receiving it, what should I do?
A: We will replace new items for you at once and then we make the judgement for the issue.
- Q4: Do you accept OEM design?
A: Yes, we do. We can design according to your requirement, MOQ usually 100-1000.
- Q5: Do you accept pay 30% in advance?
A: Yes, we do. We can start to prepare your goods when receive 30% payment, and send them after get the rest 70% payment.
- Q6: What payment terms you accept?
A: We accept Paypal, T/T, Western Union, Wechat, Alipay, in Cash (RMB or USD).



Shenzhen ChengHao Optoelectronic Co., Ltd.



+86 755-27806536



add@chenghaolcm.com



chenghaolcd.com

7th floor, building C5, Hengfeng Industrial City, Hangcheng street, Bao'an District, Shenzhen