



FPC TFT 600nits Sunlight Readable Lcd Display 1024x600 Thin Lcd Display Module

Basic Information

- Place of Origin: ShenZhen, China
- Brand Name: Chenghao/Oem
- Certification: ROHS ISO9001 CE
- Model Number: CH700WS10C
- Minimum Order Quantity: 100 pcs
- Price: /
- Packaging Details: All the products are packed in right way to keep it safe. For small sizes of products we use tray + carton, For bigger sizes we use foam slot + carton. we also design packages according to customers' requirements
- Delivery Time: 7-15 working days
- Payment Terms: T/T
- Supply Ability: 300Kpcs/month



Product Specification

- Product Name: 600 Nits Sunlight Readable Lcd Display
- Resolution: 1024*(RGB)*600
- MODEL NO: CH700WS10C
- Outline Dimension: 16.49×10.0(H)×0.35(T) Cm
- Display Area: 15.421(W)×8.592(H) Cm
- Backlight Type: 30 White LED
- Highlight: **600nits Sunlight Readable Lcd Display ,
FPC TFT Sunlight Readable Lcd Display ,
1024x600 Thin Lcd Display Module**



Product Description

1. Specification

ITEM	STANDARD VALUES	UNITS
Resolution	1024x600	dots
MODEL NO	CH700WS10C	--
Size / Inch	7 inch	
Outline Dimension	164.9(W)×100.0(H)×3.5(T)	mm
Display Area	154.21(W)×85.92(H)	mm
Dot Pitch	0.1506(W)×0.1432(H)	mm
Backlight Type	30 White LED	--
Operating temperature	-20~+70	°C
Storage temperature	-30~+80	°C

2. Description

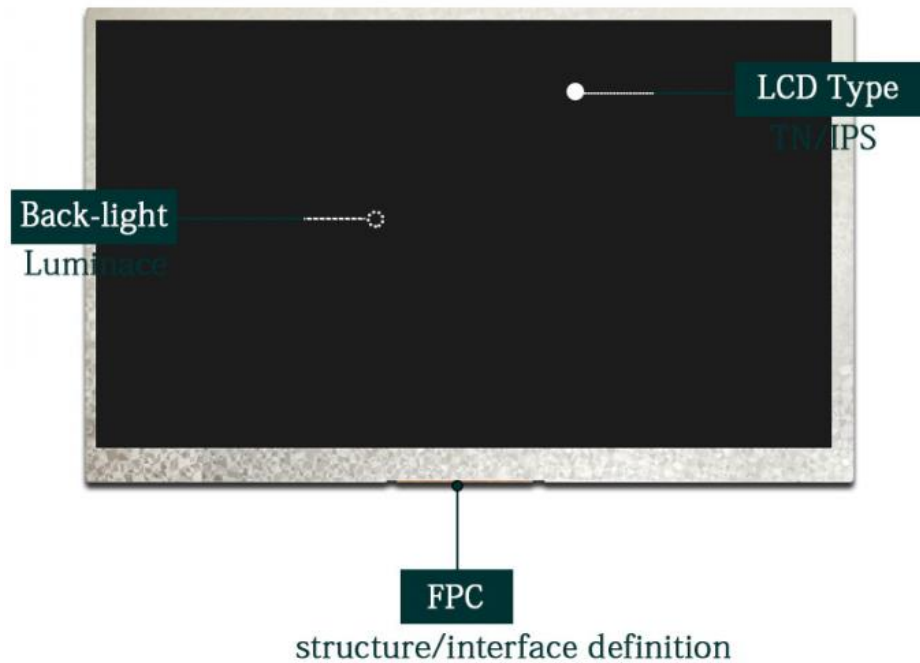
- * CH700WS10C is a color active matrix thin film transistor (TFT) liquid crystal display (LCD) that uses amorphous silicon TFT as a switching device.
- * It is composed of a TFT LCD panel, driver IC, FPC, a high brightness back-light .
- * 7 inch color screen display
- * It is 1024 (RGB) x 600 Dots Hight Resolution TFT Screen Module , clear display
- * It is equipped with a high backlight of 600 cd/m2 and is normally readable in sunlight . Backlight with different brightness options from 200 - 1500 cd/m2 are available.
- * RoHS & REACH compliant.
- * Using 24-bit Parallel RGB Interface
- * Provide a rich sample program
- * Military-grade process standards, long-term stable work
- * Provide underlying driver technical support
- * Long term stable production and guaranteed supply
- * Specific touch panel can be designed & customized.
- * Support customized service! Customizable content includes FPC/backlight brightness/installation of touch panel, etc.

3. Quick Detail

- * LCD name: 600 Nits Sunlight Readable Lcd Display 1024x600 Thin Lcd Display Module
- * Part No.: CH700WS10C
- * Size.: 7"
- * Display type: 7"TFT
- * Display colors: 16.7M
- * Resolution (pixels): 1024 (RGB)*600
- * Pixel pitch: 0.1506(W)×0.1432(H) mm
- * Viewing direction: all Viewing Angle
- * Controller IC: //
- * Display mode: Transmissive / Normally Black / IPS
- * Overall size: 16.49(W)×10.00(H)×0.35(T) cm
- * Active Area: 15.421(W)×8.592(H) cm
- * Luminance: 600nits
- * Contrast: 800:1
- * Interface type: 24bits RGB Interface
- * Pin NO.: 40pins
- * Pin pitch: 0.5mm
- * Connecting type: Connector type
- * Backlight type and color: 30 LED backlight / white
- * LED Life span: 20000h
- * Whether to support the installation of touch panel: Yes
- * Support Touch Panel type: Capacitive / Resistive Touch Panel

Product Customization

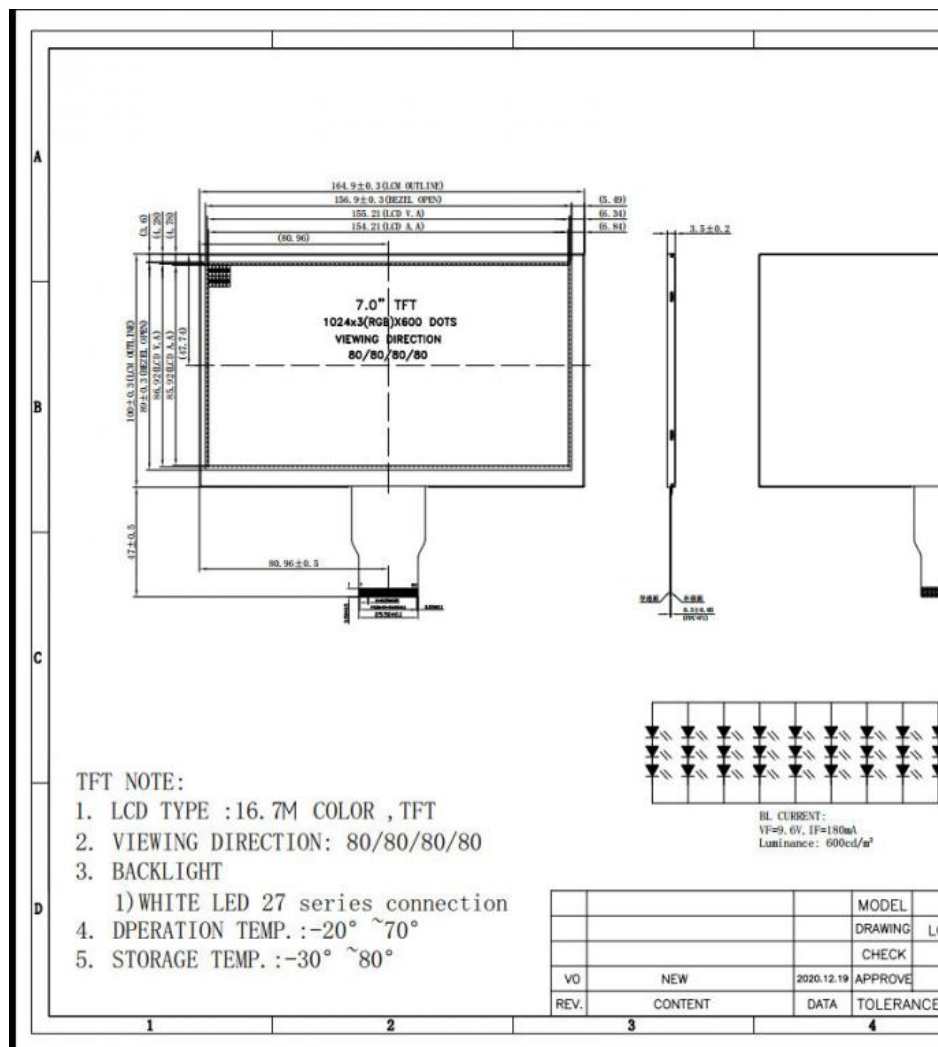
The part marked in the figure below is the content that can be customized according to customer's request



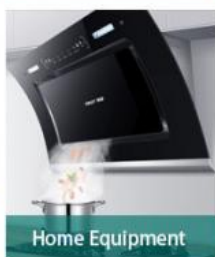
4. Drawings

Notes:

- (1) Display Type : 7inch-TFT
- (2) Viewing Direction : 80/80/80/80
- (3) Lcd Drive IC : *****
- (4) Polarizer Mode : Transmissive / Negative
- (5) Operating Temp : -20~70 °C
- (6) Storage Temp : -30~80 °C
- (7) Unmarker Tolerance: ± 0.20
- (8) Protection : ROHS



5. Application



6. Products quality assurance

(1)High-quality raw material supplier :

after-sales guarantee and long-term stable supplier, LCD panel and Driver IC made of A-regulated raw materials.

(2)Other materials:

such as polarizers, backlight film materials, etc. We also use brand new A-regulated raw materials

(3)Strict quality control:

Through rate up to 98.5%,Customer online defect rate as low as 0.3%.

Inspection is done in FOG==>LCM==>LCM+RTP/CTP==> production online inspection ==>Q.C inspection==>aging test 4 hours with load in 60 °C special room (as option)==>OQC.

A product must pass 5 tests before shipment: incoming inspection, 100% online inspection, QC on-site inspection, aging test and OQC inspection, etc.

7. FAQ

Q1: Are you manufacturer ?

A: Yes, we are manufacturer.

Q2: How long is your delivery time?

A: Normally 3-5 working days after payment; Special requirement orders, delivery time is negotiable.

Q3: If the products can't work after receiving it,what should I do?

A: We will replace new items for you at once and then we make the judgement for the issue.

Q4: Do you accept OEM design?

A: Yes,we do.We can design according to your requirement, MOQ usually 100-1000.

Q5: Do you accept pay 30% in advance?

A: Yes,we do.We can start to prepare your goods when receive 30% payment, and send them after get the rest 70% payment.

Q6: What payment terms you accept?

A: We accept Paypal, T/T, Western Union, Wechat, Alipay, in Cash (RMB or USD).



Shenzhen ChengHao Optoelectronic Co., Ltd.



+86 755-27806536



add@chenghaolcm.com



chenghaolcd.com

7th floor, building C5, Hengfeng Industrial City, Hangcheng street, Bao'an District, Shenzhen