



4.3 Inch TFT NT35510 480*800 Small LCD Touch Screen For POS Machine

Our Product Introduction

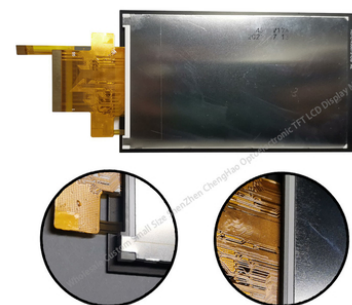
Basic Information

- Place of Origin: ShenZhen, China
- Brand Name: Chenghao/Oem
- Certification: ROHS ISO9001 CE
- Model Number: CH430WV17A-CT
- Minimum Order Quantity: 100 pcs
- Price: /
- Packaging Details: All the products are packed in right way to keep it safe. For small sizes of products we use tray + carton, For bigger sizes we use foam slot + carton. we also design packages according to customers' requirements
- Delivery Time: 7-15 working days
- Payment Terms: T/T
- Supply Ability: 300Kpcs/month



Product Specification

- Product Name: 4.3 Inch TFT Touch Display
- LCD Type: TFT+CTP
- Dot Arrangement: 480×800(RGB)
- Color Filter Array: RGB Vertical Stripe
- Display Mode: IPS/ Transmissive/ NormallyBlack
- Viewing Angle: ALL
- TFTDriver IC: NT35510
- Highlight: 4.3inch TFT Small LCD Touch Screen, NT35510 Small LCD Touch Screen, 4.3inch POS Machine LCD Screen



Product Description

4.3 Inch TFT NT35510 480*800 Small LCD Touch Screen For POS Machine

4.3 Inch TFT Touch Display NT35510 480*800 Lcd Display Oem For Pos Machine

1. Specification

ITEM	STANDARD VALUES	UNITS
LCD type	TFT+CTP	--
Dot arrangement	480×(RGB)×800	dots
Color filter array	RGB vertical stripe	--
Display mode	IPS/ Transmissive/ NormallyBlack	--
Viewing Direction	ALL	--
TFT Driver IC	NT35510	--
CTP type	G+F+F	--

2. Description

ChengHao Display model CH430WV17A-CT is a color active matrix thin film transistor (TFT) liquid crystal display (LCD) that uses amorphous silicon TFT as a switching device. This model is composed of a TFT LCD panel, a driving IC, a high brightness back-light, a capacitive touch panel and FPC.

This TFT LCD has a 4.3 (16:9) inch diagonally measured active display area with WVGA (480 horizontal by 800 vertical pixel) resolution. The driver used for this project is the NT35510 or compatible and can display 16M colors by 24 bit R.G.B. signal input. The driver is mounted on the glass and the interconnection via FPC including components to drive the display module. Support RGB interface.

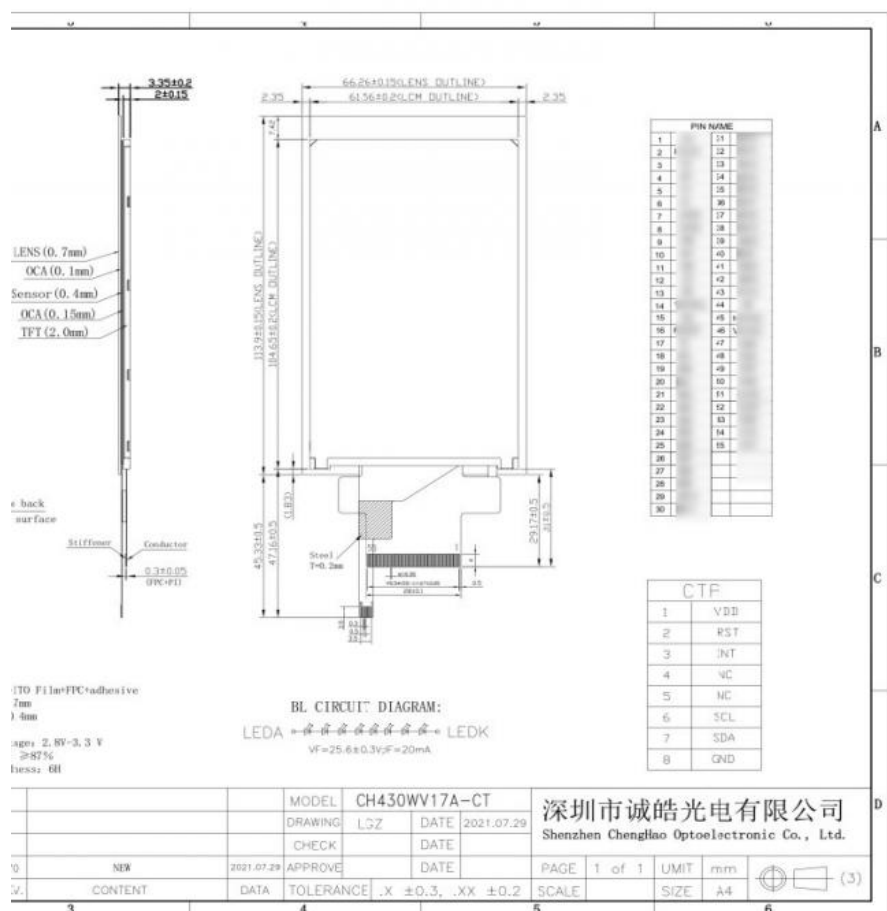
In addition, FPC can also be customized according to customer requirements, such as modifying back-light and CTP structure, interface definition, etc.

RoHS Compliance & Halogen Free.

3. Drawings

Notes:

- (1) Display Type : TFT
- (2) Viewing Direction : All
- (3) Lcd Drive IC : NT35510
- (4) Polarizer Mode : IPS/ Transmissive/ NormallyBlack
- (5) Operating Temp : -20~70 °C
- (6) Storage Temp : -30~80 °C
- (7) Unmarker Tolerance: ± 0.20
- (8) Protection : ROHS



V0

5/17

©All Rights Reserved

4. Quick Detail

* LCD name: **4.3 Inch TFT Touch Display NT35510 480*800 Lcd Display Oem For Pos Machine**

* Part No.: CH430WV17A-CT

* Size.: 4.3 inch

* With touch panel or not: Yes

* Touch type: Capacitive

* Display type: TFT

* Display colors: 16.7M

* Resolution (pixels): 480x800 dots

* Pixel pitch: 0.117(W)×0.117(H) mm

* Viewing direction: All Viewing Angle

* Controller IC: NT35510

* Display mode: IPS/ Transmissive/ NormallyBlack

* Overall size: 66.26(W)×113.9(H)×3.35(T) mm

* TFT / CTP Active Area: 56.16(W)×93.6(H) mm

* Luminance: 400 cd/m2

* Contrast: 800:1

* Interface type: 8-/16-/18-/24-bit80-system interface

SPI+16-/18-/24-bitRGB interface

MIPI DSI

* Pin NO.: 20pins

* Pin pitch: 0.5mm

* Connecting type: Connector type

* Input voltage: 3.3V

* Backlight type and color: LED backlight/white

Backlight: 8White LED in serial

If=20mA, Vf =25.6

* LED Life span: 20000h

5. Application

Products are widely used in general communications, household appliances, industrial control, medical equipment, POS machines, instruments, meters, GPS navigation, digital photo frames, netbooks, financial electronics, communication electronics, consumer electronics, information appliances, culture, education, sports and entertainment, etc. field. Such as attendance machine, fingerprint device, access control machine, stock machine, walkie-talkie, video doorbell, learning machine, point reading machine, GPS navigator, and so on .



Smart Wearable Device



Car Equipment



Payment Equipment



Client Terminal



Elevator Display



Industrial Equipment



Instrument Equipment



Artificial Intelligence



Medical Equipment



Home Equipment



Identify The Device



Fingerprint Recognition

6. Products quality assurance

(1)High-quality raw material supplier :

after-sales guarantee and long-term stable supplier, LCD panel and Driver IC made of A-regulated raw materials.

(2)Other materials:

such as polarizers, backlight film materials, etc. We also use brand new A-regulated raw materials

(3)Strict quality control:

Through rate up to 98.5%,Customer online defect rate as low as 0.3%.

Inspection is done in FOG==>LCM==>LCM+RTP/CTP==> production online inspection ==>Q.C inspection==>aging test 4 hours with load in 60 °C special room (as option)==>OQC.

A product must pass 5 tests before shipment: incoming inspection, 100% online inspection, QC on-site inspection, aging test and OQC inspection, etc.

7. FAQ

Q1: Do you accept customization displays and touch screens?

A: Sure, you can customization the FPC, Backlight and the touch screen.

Q2: What type of interface is your display screen?

A: Small sized of displays generally support SPI, MCU, RGB, MIPI. Medium sized displays generally support LVDS, MIPI, EDP. Different specifications use different interfaces.

Q3: Do you used capacitive touch screen or resistive touch screen.

A: We have capacitive touch screen and resistive touch screen .

Q4: What is your sample policy?

A: If there is stock, you can sample at any time, if there is no stock, it will take some time, and then wait for the materials to come back to sample. But the customer needs to pay the sample fee and express fee.

Q5: How long is your lead time for mass production?

A: It takes about 20 - 45 working days for mass production, depending on the model and order quantity.

Q6: How to ensure long-term stable delivery?

A: First, we will recommend products that can be delivered for a long time to customers, and second, we will have a large number of stocks in advance for a long time.

Q7: What is your mode of payment for mass production?

A: Generally, after receiving 50%-100% deposit from customers, they begin to prepare materials. Delivery is about 5 working days after receipt of the final payment.

Q8: Will you inspect the goods before delivery?

A: Yes, we'll ship the goods after 100% inspection.

Q9: How long is your warranty period?

A: We guarantee the quality for one year.



Shenzhen ChengHao Optoelectronic Co., Ltd.



+86 755-27806536



add@chenghaolcm.com



chenghaolcd.com

7th floor, building C5, Hengfeng Industrial City, Hangcheng street, Bao'an District, Shenzhen