



3.95 Inch LCD IPS Panel 2 Lane MIPI DSI Interface LCD Display Module

Our Product Introduction

Basic Information

- Place of Origin: ShenZhen, China
- Brand Name: Chenghao/Oem
- Certification: ROHS ISO9001 CE
- Model Number: CH400WV13
- Minimum Order Quantity: 100 pcs
- Price: /
- Packaging Details: All the products are packed in right way to keep it safe. For small sizes of products we use tray + carton, For bigger sizes we use foam slot + carton. we also design packages according to customers' requirements
- Delivery Time: 7-15 working days
- Payment Terms: T/T
- Supply Ability: 300Kpcs/month



Product Specification

- Product Name: 3.95 Inch LCD IPS Panel
- Module Type: 3.95"TFT
- Display Mode: IPS / Transmissive / Normally Black
- Number Of Dots: 480*3(RGB)*800 Dots
- Viewing Direction: ALL
- Module Size: 61.0(W)*102.0(H)*2.0(T)mm
- TFT Active Area: 51.84(W)*86.4(H)mm
- Highlight: 3.95 Inch LCD IPS Panel, ROHS LCD IPS Panel, 3.95 Inch LCD Display Module



Product Description

3.95 Inch LCD IPS Panel 2 Lane MIPI DSI Interface LCD Display Module

3.95 Inch LCD IPS Panel 480*800 2 Lane MIPI DSI Interface Lcd Display Module

1. Specification

ITEM	STANDARD VALUES	UNITS
LCD type	3.95" TFT	--
Dot arrangement	480(RGB)×800	dots
Color filter array	RGB vertical stripe	--
Display mode	IPS/ Transmissive/ NormallyBlack	--
Viewing Direction	All	--
TFT Driver IC	ST7701S	--
Weight	TBD	g

2. Description

- * CH400WV13 is a Transmissive type color active matrix liquid crystal display (LCD).
- * It is composed of a TFT LCD panel, driver IC, FPC, backlight .
- * It is 480 (RGB) × 800 resolution TFT LCD module, clear display
- * 4-inch color screen display
- * Using 2-lane MIPI DSI Interface
- * Backlight with different brightness options from 200 - 1500 cd/m2 are available.
- * Military-grade process standards, long-term stable work
- * Provide underlying driver technical support
- * Support customized service! Customizable content includes FPC/backlight brightness/installation of touch panel, etc.
- * Specific touch panel can be designed & customized.
- * RoHS & REACH compliant.
- * If you can't find a suitable one, contact us to get a recommendation.

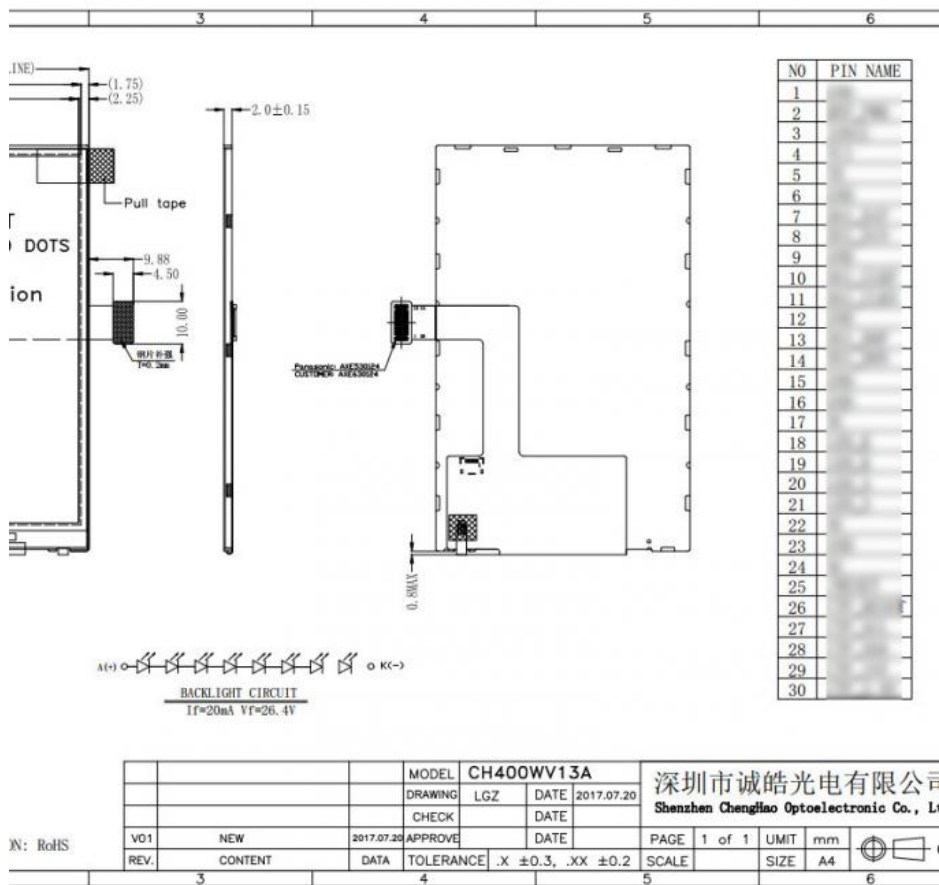
3. Quick Detail

- * LCD name: **3.95 Inch LCD IPS Panel 480*800 2 Lane MIPI DSI Interface Lcd Display Module**
- * Part No.: CH400WV13
- * Size.: 4.0 inch
- * With touch panel or not: Not
- * Support Touch type: Capacitive Touch Panel or Resistive Touch Panel
- * Display type: 4.0" TFT
- * Display colors: 16.7M/262K/65K
- * Resolution (pixels): 480(RGB)*800
- * Pixel pitch: 0.108(W)×0.108(H) mm
- * Viewing direction: 80/80/80/80
- * Controller IC: ST7701S
- * Display mode: Transmissive / Normally White / IPS
- * Overall size: 56.34(W)×95.70(H)×2.0(T) mm
- * Active Area: 51.84(W)×86.4(H) mm
- * Luminance: 400 cd/m2
- * Contrast: 800:1
- * Interface type: 8/9/16/18Bit MCU 16/18/24bit RGB 3-line/4-line Serial
- * Pin NO.: 30pins
- * Pin pitch: 0.5mm
- * Connecting type: Connector type
- * Input voltage: 3.3V
- * Backlight type and color: LED backlight/white
- Backlight: 6 LED parallel
- If=20mA, Vf =26.4V
- * LED Life span: 50000h

4. Drawings

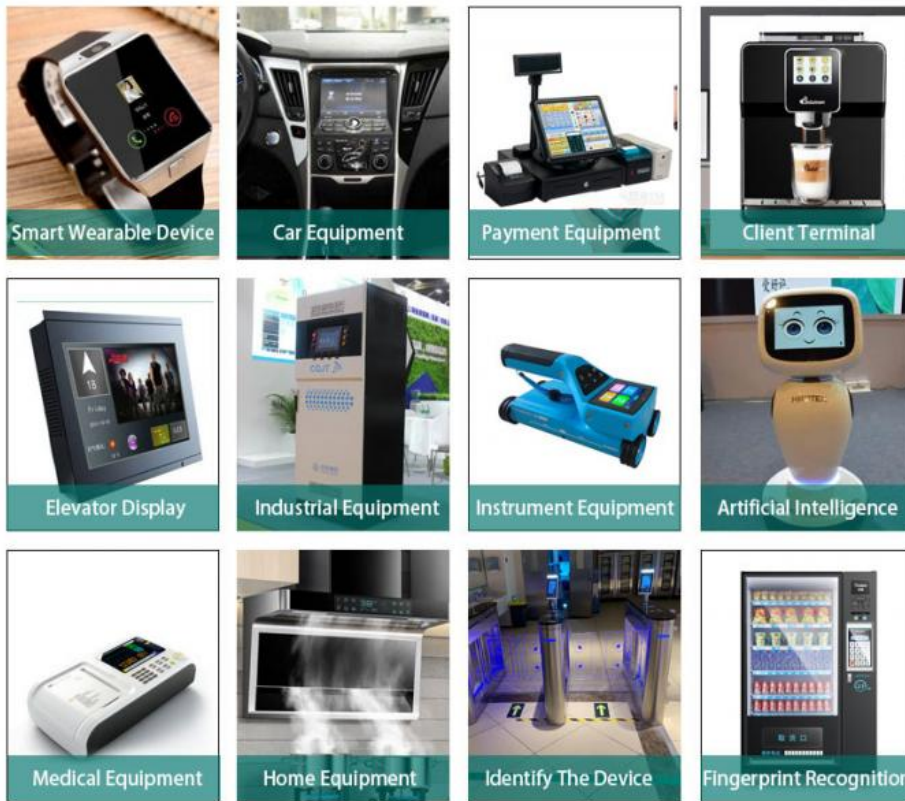
Notes:

- (1) Display Type : 3.95" TFT
- (2) Viewing Direction : 80/80/80/80
- (3) Lcd Drive IC : ST7701S
- (4) Polarizer Mode : IPS/ Transmissive/ NormallyBlack
- (5) Operating Temp : -20~70 °C
- (6) Storage Temp : -30~80 °C
- (7) Unmarker Tolerance: ±0.20
- (8) Protection : ROHS



5. Application

- (1) communications
- (2) household appliances
- (3) industrial control
- (4) medical equipment
- (5) POS machines
- (6) instrumentation
- (7) GPS navigation
- (8) digital photo frames
- (9) netbooks
- (10) financial electronics
- (11) communication electronics
- (12) consumer electronics
- (13) information appliances
- (14) culture,
- (15) education,
- (16) sports and entertainment and other fields .



6. Why Choose Us ?

The high quality products enable it to build a long-term relationship with world-famous enterprises in the industries

(1) Competitive Price

Own-owned factories offer lower prices and better quality assurance.

(2) Strong Technical Strength

We are a top supplier specializing in the production of color LCD screens. We have a technical team with rich experience in product research and development, and can provide customers with professional technical support and customized consulting services at any time, which is very important for cooperative customers with special project needs.

(3) Long-term Partner

Products are sold to more than 40 countries, so from Chenghao Optoelectronic you can get more stable supplying promise;

(4) Professional Service

We have a professional after-sales team that can provide you with after-sales consulting services 24 hours a day. At the same time, if you encounter any problems in the process of using our products, you can give us feedback, and our technical engineers will provide you with online remote consulting services at any time.

(5) Quality to be ensure

All panels are 100% brand new, without false panels; All packages have labels and serial numbers for easy viewing by customers;

7. FAQ

Q1: Do you accept customization displays and touch screens?

A: Sure, you can customization the FPC, Backlight and the touch screen.

Q2: What type of interface is your display screen?

A: Small sized of displays generally support SPI, MCU, RGB, MIPI. Medium sized displays generally support LVDS, MIPI, EDP. Different specifications use different interfaces.

Q3: Do you used capacitive touch screen or resistive touch screen.

A: We have capacitive touch screen and resistive touch screen .

Q4: What is your sample policy?

A: If there is stock, you can sample at any time, if there is no stock, it will take some time, and then wait for the materials to come back to sample. But the customer needs to pay the sample fee and express fee.

Q5: How long is your lead time for mass production?

A: It takes about 20 - 45 working days for mass production, depending on the model and order quantity.

Q6: How to ensure long-term stable delivery?

A: First, we will recommend products that can be delivered for a long time to customers, and second, we will have a large number of stocks in advance for a long time.

Q7: What is your mode of payment for mass production?

A: Generally, after receiving 50%-100% deposit from customers, they begin to prepare materials. Delivery is about 5 working days after receipt of the final payment.

Q8: Will you inspect the goods before delivery?

A: Yes, we'll ship the goods after 100% inspection.

Q9: How long is your warranty period?

A: We guarantee the quality for one year.



Shenzhen ChengHao Optoelectronic Co., Ltd.



+86 755-27806536



add@chenghaolcm.com



chenghaolcd.com

7th floor, building C5, Hengfeng Industrial City, Hangcheng street, Bao'an District, Shenzhen