



## 1.77inch TFT LCD Color Monitor 8bit 8080 Series System Interface

### Basic Information

- Place of Origin: ShenZhen, China
- Brand Name: Chenghao/Oem
- Certification: ROHS ISO9001 CE
- Model Number: CH180QQ21A
- Minimum Order Quantity: 100 pcs
- Price: /
- Packaging Details: All the products are packed in right way to keep it safe. For small sizes of products we use tray + carton, For bigger sizes we use foam slot + carton. we also design packages according to customers' requirements
- Delivery Time: 7-15 working days
- Payment Terms: T/T
- Supply Ability: 300Kpcs/month



### Product Specification

- Product Name: Tft Lcd Color Monitor
- Size: 1.8 Inch
- Dot Arrangement: 128(RGB)×160 Dots
- Viewing Direction: 6:00
- IC Model: ST7735S
- Interface: 8 Bit 8080 Series System Interface
- Back Light: 2pcs White LED
- Highlight: 1.77inch TFT LCD Color Monitor ,  
8bit TFT LCD Color Monitor ,  
1.77inch TFT LCD Display Module



## Product Description

### 1.77inch TFT LCD Color Monitor 8bit 8080 Series System Interface

#### 1.77" TFT Lcd Color Monitor 8bit 8080 Series System Interface Display Module

##### 1. Specification

ITEM	STANDARD VALUES	UNITS
LCD type	1.77" TFT	--
Dot arrangement	128(RGB)×160	dots
Color filter array	RGB vertical stripe	--
Display mode	TN / Transmissive / Normally White	--
Viewing Direction	6o'clock	--
GrayScaleInversiondirection	12o'clock	--
Driver IC	ST7735S	--

##### 2. Quick Detail

\* LCD name: **1.77" Tft Lcd Color Monitor 8bit 8080 Series System Interface Display Module**

\* Part No.: CH180QQ21A

\* Size.: 1.77 inch

\* With touch panel or not: No

\* Support Touch type: Capacitive or Resistive Touch Panel

\* Display type: TFT

\* Display colors: 65K

\* Resolution (pixels): 128(RGB)\*160 Dots

\* Pixel pitch: 0.219(W)×0.219(H)

\* Viewing direction: 6:00

\* Controller IC: ST7735S

\* Display mode: Transmissive/ Normally White/ TN

\* Overall size: 34.7(W)×46.7(H)×2.3(T) mm

\* Active Area: 28.032(W)×35.04(H) mm

\* Luminance: 500 cd/m2

\* Contrast: 500:1

\* Support Interface type: 8/9/16/18Bit MCU 16/18/24bit RGB 3-line/4-line Serial

\* Pin NO.: 24pins or Optional

\* Pin pitch: 0.5mm

\* Connecting type: Connector type

\* Backlight type and color: LED backlight/white

Backlight: 2pcs White LED

If=20mA, Vf =5.6~6.6 V

\* LED Life span: 20000 h

##### 2. Description

\* CH180QQ21A is a Transmissive type color active matrix liquid crystal display (LCD).

\* It is composed of a TFT LCD panel, driver IC, FPC, backlight,.

\* It is 320(RGB)×240 resolution TFT LCD module,clear display

\* 1.77 inch color screen display

\* Using 8-bit 8080-series system interface

\* Backlight with different brightness options from 200 - 1500cd/m2 are available.

\* Military-grade process standards, long-term stable work

\* Provide underlying driver technical support

\* Support customized service! Customizable content includes FPC/backlight brightness/installation of touch panel, etc.

\* Specific touch panel can be designed & customized.

\* RoHS & REACH compliant.

\* If you can't find a suitable one, contact us to get a recommendation.

##### 3. Drawings

Notes:

(1) Display Type : 1.77" TFT

(2) Viewing Direction : 6:00

(3) Lcd Drive IC : ST7735S

(4) Polarizer Mode : Transmissive/Positive

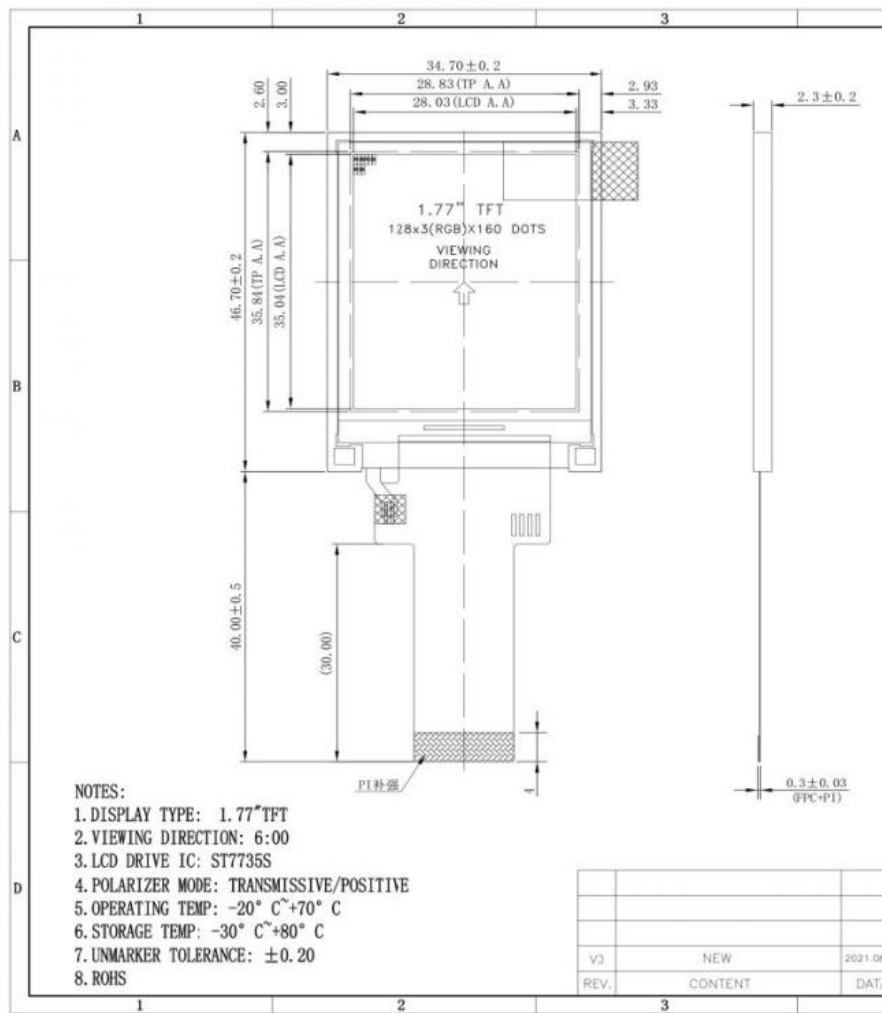
(5) Operating Temp : -20~70 °C

(6) Storage Temp : -30~80 °C

(7) Unmarker Tolerance: ±0.20

(8) Protection : ROHS

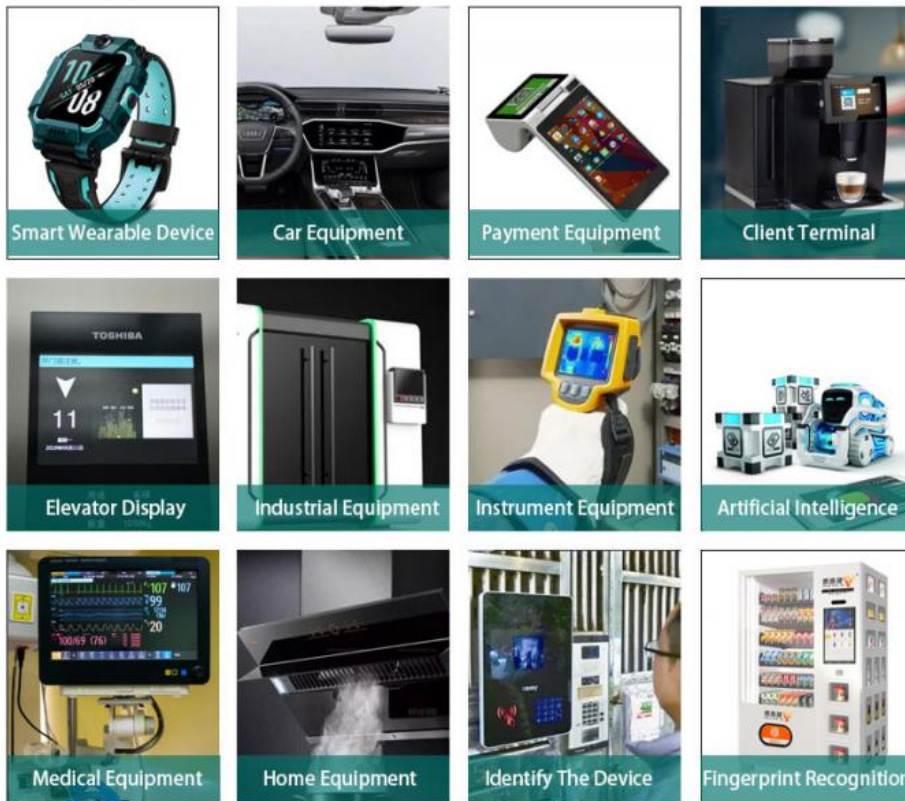
### 3. External Dimensions



### 4. Application

Field of application or equipment:

- (1) attendance machine
- (2) fingerprint device
- (3) access control machine
- (4) stock machine
- (5) walkie-talkie
- (6) video doorbell
- (7) learning machine
- (8) point reading machine
- (9) GPS navigator, and so on .



## 5. Our Service

- (1) Fully / Semi-automated production line ensure the best quality.
- (2) Custom Design, can specially meet your needs.
- (3) Fast Delivery ,about 20 days for lead time
- (4) Samples available on request; Small MOQ orders can be negotiated.
- (5) Provide best pre-sale and after-sale service to you.

Our service is not only this, if you have other requirements or special service needs, please contact us, we will be very happy to communicate with you!

## 7. FAQ

Q1: Are you manufacturer ?

A: Yes, we are manufacturer.

Q2: How long is your delivery time?

A: Normally 3-5 working days after payment; Special requirement orders, delivery time is negotiable.

Q3: If the products can't work after receiving it, what should I do?

A: We will replace new items for you at once and then we make the judgement for the issue.

Q4: Do you accept OEM design?

A: Yes, we do. We can design according to your requirement, MOQ usually 100-1000.

Q5: Do you accept pay 30% in advance?

A: Yes, we do. We can start to prepare your goods when receive 30% payment, and send them after get the rest 70% payment.

Q6: What payment terms you accept?

A: We accept Paypal, T/T, Western Union, Wechat, Alipay, in Cash (RMB or USD).



**Shenzhen ChengHao Optoelectronic Co., Ltd.**



+86 755-27806536



add@chenghaolcm.com



chenghaolcd.com

7th floor, building C5, Hengfeng Industrial City, Hangcheng street, Bao'an District, Shenzhen