



4.3inch Small LCD Touch Screen Module NT35510 TFT Driver IC

Basic Information

- Place of Origin: ShenZhen, China
- Brand Name: Chenghao/Oem
- Certification: ROHS ISO9001 CE
- Model Number: CH430WV15A-CT 0
- Minimum Order Quantity: 100 pcs
- Price: /
- Packaging Details: All the products are packed in right way to keep it safe. For small sizes of products we use tray + carton, For bigger sizes we use foam slot + carton. we also design packages according to customers' requirements
- Delivery Time: 7-15 working days
- Payment Terms: T/T
- Supply Ability: 300Kpcs/month



Product Specification

- Product Name: 4.3inch Touch Screen Module
- LCD Type: 4.3" TFT+CTP
- Dot Arrangement: 480×(RGB)×800 Dots
- Color Filter Array: RGB Vertical Stripe
- Display Mode: IPS/ Transmissive/ NormallyBlack
- Viewing Direction: ALL
- TFT Driver IC: NT35510
- CTP Type: G+F+F
- Highlight: 4.3inch Small LCD Touch Screen, NT35510 Small LCD Touch Screen, 4.3inch LCD Touch Screen Module



Product Description

4.3inch Small LCD Touch Screen Module NT35510 TFT Driver IC

4.3inch Touch Screen Module 480*800 Pixel Tft Lcd Display With CTP

1. Specification

MODEL NO.	CH430WV15A-CT
Module type	4.3" TFT+CTP
Display Mode	IPS/ Transmissive/ NormallyBlack
Number of Dots	480×(RGB)×800
Viewing Direction	ALL
Module size	66.26(W)×113.9(H)×3.35(T) mm
TFT Active area	56.16(W)×93.6(H) mm
TFT Dot pitch	0.117(W)×0.117(H) mm
Interface	2 lane-MIPI DSI
Backlight Type	8 White LED in serial
Color filter array	RGB vertical stripe

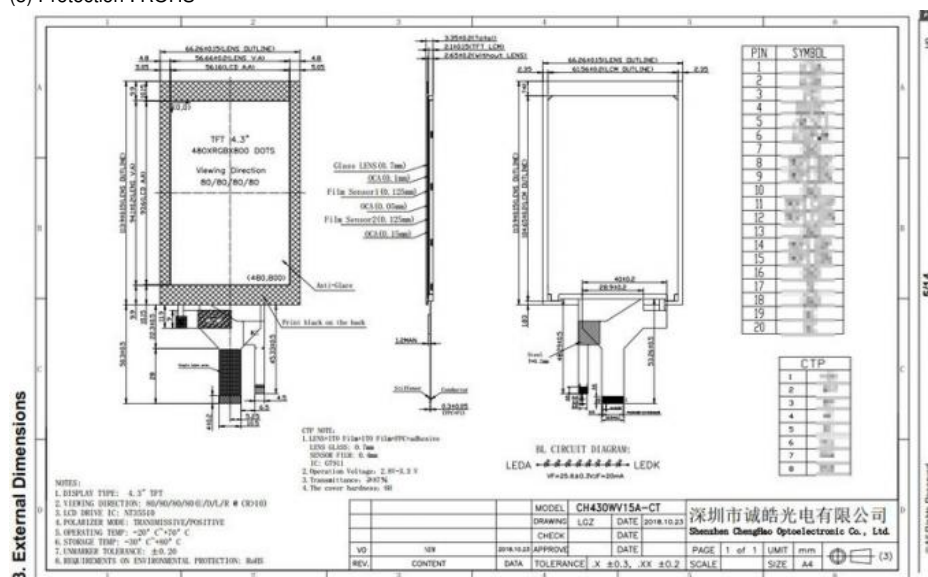
2. Description

- * CH430WV15A-CT is a Transmissive type color active matrix liquid crystal display (LCD).
- * It is composed of a TFT LCD panel, driver IC, FPC, backlight , Capacitive touch panel
- * It is 480*(RGB)*800 resolution TFT LCD module.
- * Backlight with different brightness options from 200 - 1500cd/m2 are available.
- * Specific touch panel can be designed & customized.
- * RoHS & REACH compliant.
- * If you can't find a suitable one, contact us to get a recommendation.

3. Drawings

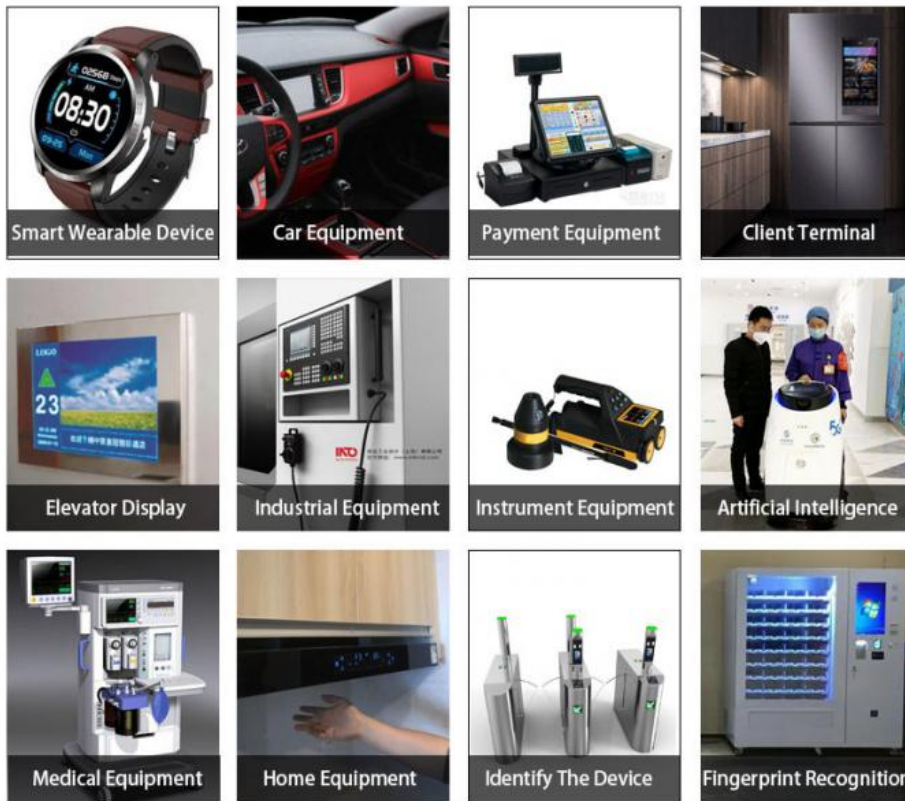
Notes:

- (1) Display Type : 4.3" TFT+CTP
- (2) Viewing Direction : 80/80/80/80
- (3) Lcd Drive IC : NT35510
- (4) Polarizer Mode : Transmissive / Negative
- (5) Operating Temp : -20~70 °C
- (6) Storage Temp : -30~80 °C
- (7) Unmarker Tolerance: ±0.20
- (8) Protection : ROHS



4. Application

Our products are widely used for banking machines, communication tools, household appliances, automobile instruments, mobile phone, video door phone, E-book, stock mobile, MP5, tablet PC, GPS navigator and so on.



5. Our Service ?

1. We provide one-year product after-sales guarantee service to all customers who purchase our products.
2. For any technical problems encountered by customers in the process of testing or using our products, our technical team will provide customers with remote online technical support services at any time.
3. We are a factory-type supplier with ISO certification. Our products on sale have undergone strict quality inspection and testing before shipment, and have also passed CE/ROHS certification.
4. We have a professional after-sales service team, which can provide strong guarantee and logistical technical services for your orders.
5. Replacement within 30 days after the shipment of products from us due to products' problems.
6. We have long cooperation with many shipping companies and our export volume is large. The shipping companies can offer us good discounts.
7. All goods will be inspected and tested before shipment.
8. Customer's satisfactory is most important to us. If you have any problem or questions regarding our transaction, please contact us by Email. It will be responded within 24 hours.

6. FAQ

Q1: Do you accept customization displays and touch screens?

A: Sure, you can customize the FPC, Backlight and the touch screen.

Q2: What type of interface is your display screen?

A: Small sized of displays generally support SPI, MCU, RGB, MIPI. Medium sized displays generally support LVDS, MIPI, EDP. Different specifications use different interfaces.

Q3: Do you use capacitive touch screen or resistive touch screen.

A: We have capacitive touch screen and resistive touch screen.

Q4: What is your sample policy?

A: If there is stock, you can sample at any time, if there is no stock, it will take some time, and then wait for the materials to come back to sample. But the customer needs to pay the sample fee and express fee.

Q5: How long is your lead time for mass production?

A: It takes about 20 - 45 working days for mass production, depending on the model and order quantity.

Q6: How to ensure long-term stable delivery?

A: First, we will recommend products that can be delivered for a long time to customers, and second, we will have a large number of stocks in advance for a long time.

Q7: What is your mode of payment for mass production?

A: Generally, after receiving 50%-100% deposit from customers, they begin to prepare materials. Delivery is about 5 working days after receipt of the final payment.

Q8: Will you inspect the goods before delivery?

A: Yes, we'll ship the goods after 100% inspection.

Q9: How long is your warranty period?

A: We guarantee the quality for one year.



Shenzhen ChengHao Optoelectronic Co., Ltd.



+86 755-27806536



add@chenghaolcm.com



chenghaolcd.com

7th floor, building C5, Hengfeng Industrial City, Hangcheng street, Bao'an District, Shenzhen