



4.3 Inch 480*800 Dots LCD Touch Display IPS Transmissive Normally Black

Our Product Introduction

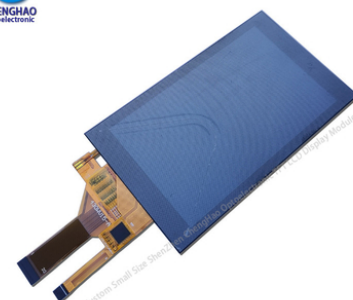
Basic Information

- Place of Origin: ShenZhen, China
- Brand Name: Chenghao/Oem
- Certification: ROHS ISO9001 CE
- Model Number: CH430WV15A-CT 2
- Minimum Order Quantity: 100 pcs
- Price: /
- Packaging Details: All the products are packed in right way to keep it safe. For small sizes of products we use tray + carton, For bigger sizes we use foam slot + carton. we also design packages according to customers' requirements
- Delivery Time: 7-15 working days
- Payment Terms: T/T
- Supply Ability: 300Kpcs/month

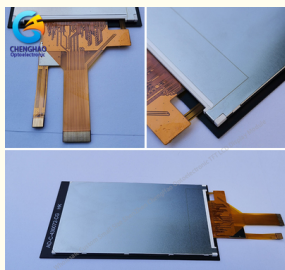


Product Specification

- Product Name: 4.3 TFT LCD Module
- LCM Type: 4.3inch TFT +CTP
- Number Of Dots: 480x800
- Module Size: 66.26(W)×113.9(H)×3.35(T) Mm
- TFT Active Area: 56.16(W)×93.6(H) Mm
- TFT Dot Pitch: 0.117(W)×0.117(H) Mm
- Interface: 2 Lane-MIPI DSI
- Backlight Type: 8 White LED In Serial
- Highlight: 4.3inch LCD Touch Display,
ROHS 4.3 Inch LCD Display,
ROHS LCD Touch Display



More Images



Product Description

4.3 Inch 480*800 Dots LCD Touch Display IPS Transmissive Normally Black

4.3 TFT LCD Module 480*800 Dots Capacitive Touch Display Panel IPS Transmissive Normally Black

1. Specification

Part No	CH430WV15A-CT	--
LCM Type	4.3inch TFT +CTP	--
Number of dots	480x800	--
Module size	66.26(W)×113.9(H)×3.35(T)	mm
TFT/CTPActive area	56.16(W)×93.6(H)	mm
Dot pitch	0.117(W)×0.117(H)	mm
Interface	2 lane-MIPI DSI	
Operating temperature	-20~+70	°C
Storage temperature	-30~+80	°C
Back Light	8White LED in serial	--
Weight	TBD	--

2. Description

Product Name:

4.3 TFT LCD Module 480*800 Dots Capacitive Touch Display Panel IPS Transmissive Normally Black

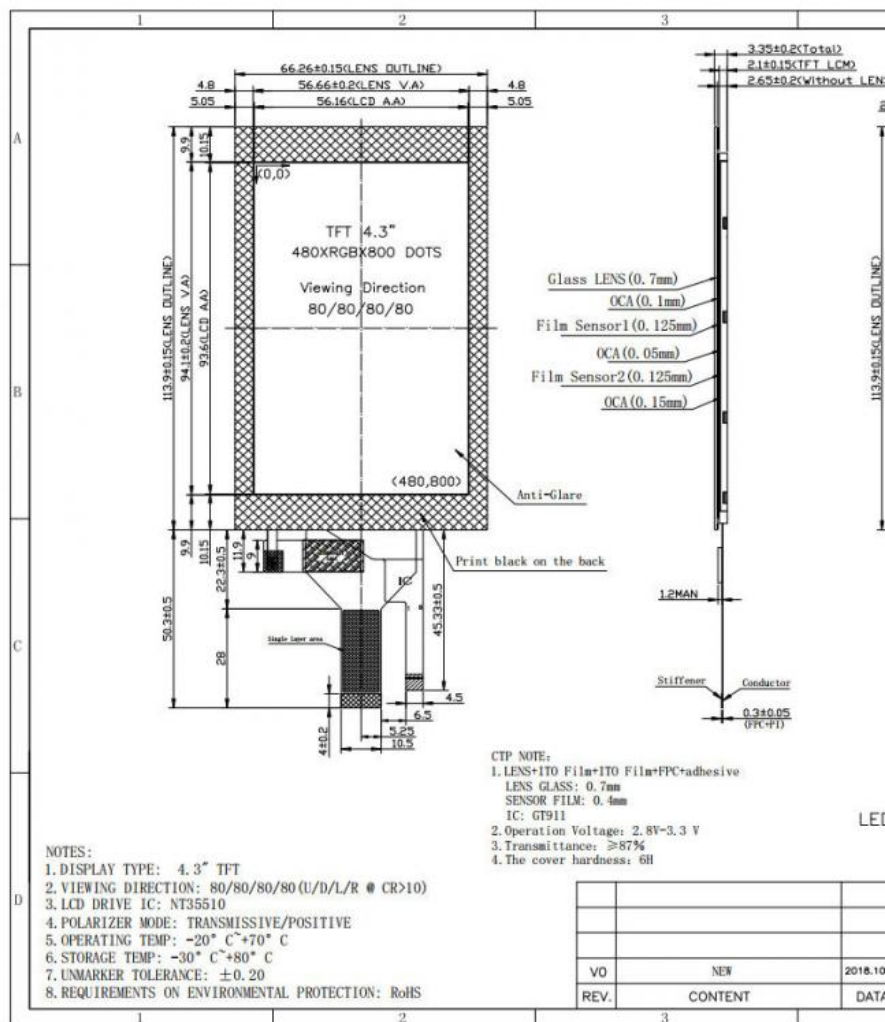
- * 4.3-inch color screen display
- * 480*800 resolution, clear display
- * Using 2 lane-MIPI DSI interface
- * Provide a rich sample program
- * Military-grade process standards, long-term stable work
- * Provide underlying driver technical support
- * Long term stable production and guaranteed supply
- * Support customized service! Customizable content includes FPC/backlight brightness/installation of touch panel, etc.

3. Drawings

Notes:

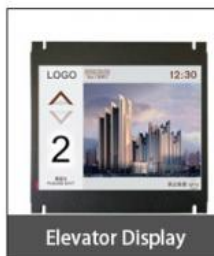
- (1) Display Type : 4.3 inch TFT+CTP
- (2) Viewing Direction : 80/80/80/80
- (3) Lcd Drive IC : NT35510
- (4) Polarizer Mode : Transmissive / Negative
- (5) Operating Temp : -20~70 °C
- (6) Storage Temp : -30~80 °C
- (7) Unmarker Tolerance: ±0.20
- (8) Protection : ROHS

3. External Dimensions



4. Application

Our products are widely used for banking machines, communication tools, household appliances, auto-mobile instruments, mobile phone, video door phone, E-book, stock mobile, MP5, tablet PC, GPS navigator and so on.



5. Why Choose Us ?

1. We have a professional technical team with rich TFT-LCD work experience.
2. We have many years of experience in global customer cooperation, and we have the ability to solve the needs of most customers' personalized customized products.
3. We have advanced tft-lcd production equipment and a first-class production team, which can provide customers with high-quality products.
4. We are equipped with a professional after-sales service team, which can provide customers with a full range of after-sales services.
5. We provide a full range of products and services, including display screens and touch screens, Technical support and customization.
6. We manage strictly in accordance with the ISO9001 management system, and our products conform to Rosh Certification.

6. FAQ

Q1: Do you accept customization displays and touch screens?

A: Sure, you can customization the FPC, Backlight and the touch screen.

Q2: What type of interface is your display screen?

A: Small sized of displays generally support SPI, MCU, RGB, MIPI. Medium sized displays generally support LVDS, MIPI, EDP. Different specifications use different interfaces.

Q3: Do you used capacitive touch screen or resistive touch screen.

A: We have capacitive touch screen and resistive touch screen .

Q4: What is your sample policy?

A: If there is stock, you can sample at any time, if there is no stock, it will take some time, and then wait for the materials to come back to sample. But the customer needs to pay the sample fee and express fee.

Q5: How long is your lead time for mass production?

A: It takes about 20 - 45 working days for mass production, depending on the model and order quantity.

Q6: How to ensure long-term stable delivery?

A: First, we will recommend products that can be delivered for a long time to customers, and second, we will have a large number of stocks in advance for a long time.

Q7: What is your mode of payment for mass production?

A: Generally, after receiving 50%-100% deposit from customers, they begin to prepare materials. Delivery is about 5 working days after receipt of the final payment.

Q8: Will you inspect the goods before delivery?

A: Yes, we'll ship the goods after 100% inspection.

Q9: How long is your warranty period?

A: We guarantee the quality for one year.



Shenzhen ChengHao Optoelectronic Co., Ltd.



+86 755-27806536



add@chenghaolcm.com



chenghaolcd.com

7th floor, building C5, Hengfeng Industrial City, Hangcheng street, Bao'an District, Shenzhen