

1.8 Inch Small TFT LCD Display 128*160 With Driver IC ST7735S

Our Product Introduction

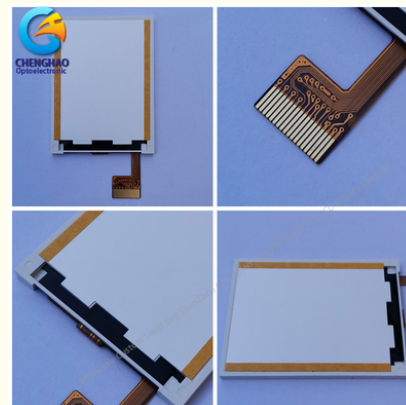
Basic Information

- Place of Origin: ShenZhen, China
- Brand Name: Chenghao/Oem
- Certification: ROHS ISO9001 CE
- Model Number: CH180QQ19A
- Minimum Order Quantity: 100 pcs
- Price: /
- Packaging Details: All the products are packed in right way to keep it safe. For small sizes of products we use tray + carton, For bigger sizes we use foam slot + carton. we also design packages according to customers' requirements
- Delivery Time: 7-15 working days
- Payment Terms: T/T
- Supply Ability: 300Kpcs/month

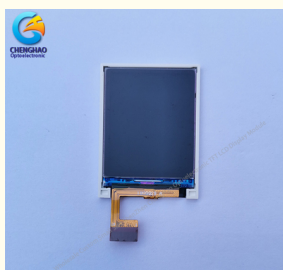


Product Specification

- Product Name: 1.8 Inch Small TFT Display
- Module Type: 1.77"TFT
- Display Mode: TN / Transmissive / Normally White
- TN / Transmissive / Normally White: 128(RGB)×160
- Viewing Direction: 6 O'clock
- Module Size: 34.7(W)×46.7(H)×2.3(T) Mm
- TFT Active Area: 28.032(W)×35.04(H) Mm
- TFT Dot Pitch: 0.219(W)×0.219(H) Mm
- Highlight: **1.8 Inch Small TFT LCD Display,
128*160 Small TFT LCD Display,
128x160 Small TFT Display**



More Images



Product Description

1.8 Inch Small TFT LCD Display 128*160 With Driver IC ST7735S

1.8 Inch Small TFT Display 128*160 Resolution Tn Lcd Module With Driver Ic ST7735S

1. Specification

MODEL NO.	CH180QQ19A
Module type	1.77" TFT
Display Mode	TN / Transmissive / Normally White
Number of Dots	128(RGB)×160
Viewing Direction	6 o'clock
Module size	34.7(W)×46.7(H)×2.3(T) mm
TFT Active area	28.032(W)×35.04(H) mm
TFT Dot pitch	0.219(W)×0.219(H) mm
Interface	4line SPI 8-bit8080-seriessystem interface
Backlight Type	White LED
Color filter array	RGB vertical stripe

2. Description

ChengHao Display model CH180QQ19A is a color active matrix thin film transistor (TFT) liquid crystal display (LCD) that uses amorphous silicon TFT as a switching device. This model is composed of a TFT LCD panel, a driving IC, a 250 cd/m2 back-light, and FPC.

This TFT LCD has a 1.8 inch diagonally measured active display area with 128(RGB)*160 (128 horizontal by 160 vertical pixel) resolution.

The driver used for this project is the ST7735S and can display 65K colors by R.G.B. signal input. The driver is mounted on the glass and the interconnection via FPC including components to drive the display module. Support 4line SPI 8-bit8080-seriessystem interfaceinterface.

In addition, FPC can also be customized according to customer requirements, such as modifying back-light structure, interface definition, etc.

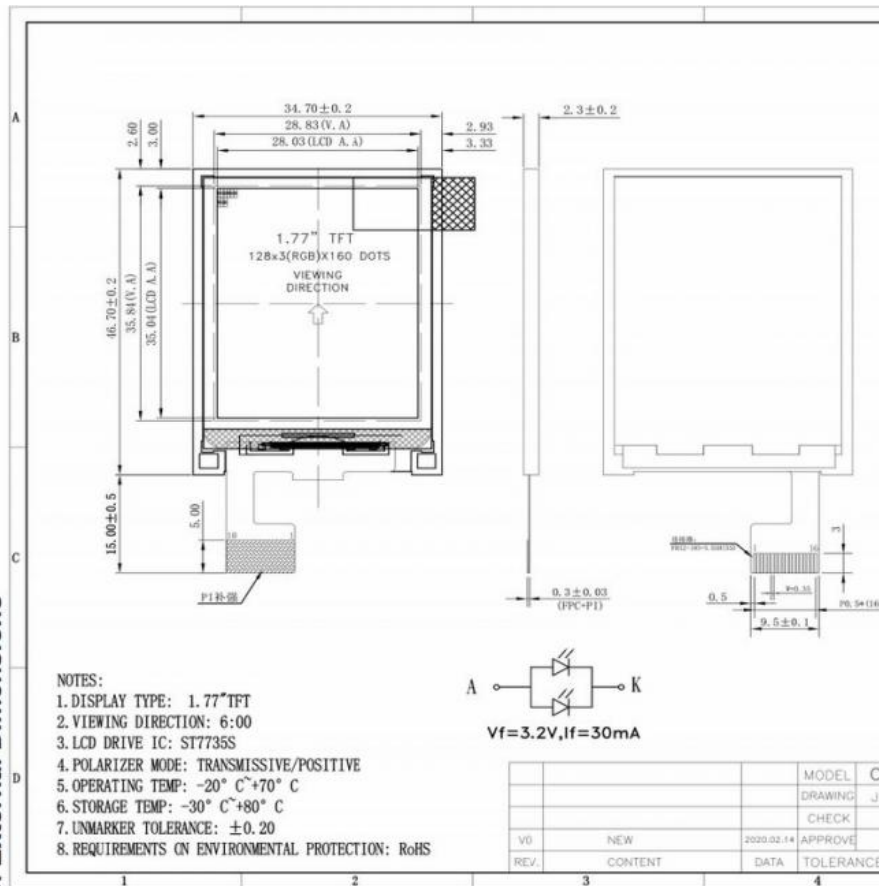
RoHS Compliance & Halogen Free.

3. Drawings

Notes:

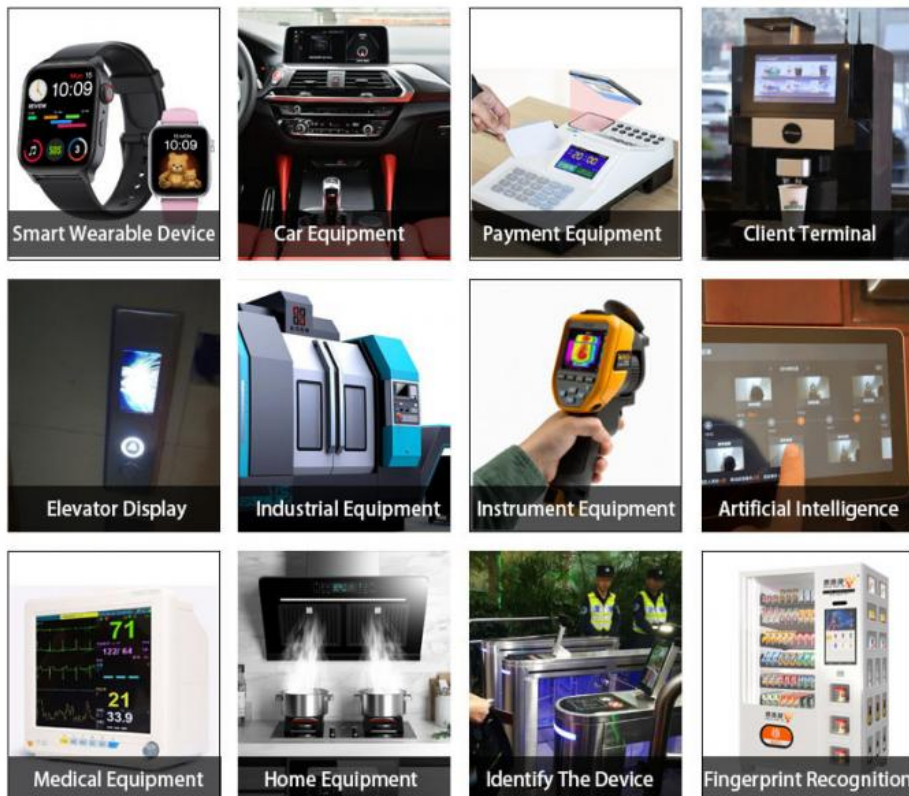
- (1) Display Type : 1.8 inch TFT
- (2) Viewing Direction : 6o'clock
- (3) Lcd Drive IC : ST7735S
- (4) Polarizer Mode : Transmissive / Positive
- (5) Operating Temp : -20~70 °C
- (6) Storage Temp : -30~80 °C
- (7) Unmarker Tolerance: ±0.20
- (8) Protection : ROHS

3. External Dimensions



4. Application

Products are widely used in general communications, household appliances, industrial control, medical equipment, POS machines, instruments, meters, GPS navigation, digital photo frames, netbooks, financial electronics, communication electronics, consumer electronics, information appliances, culture, education, sports and entertainment, etc. field. Such as attendance machine, fingerprint device, access control machine, stock machine, walkie-talkie, video doorbell, learning machine, point reading machine, GPS navigator, and so on.



5. Our Service

- (1) Fully / Semi-automated production line ensure the best quality.
- (2) Custom Design,can specially meet your needs.
- (3) Fast Delivery ,about 20 days for lead time
- (4) Samples available on request; Small MOQ orders can be negotiated.
- (5) Provide best pre-sale and after-sale service to you.

6. FAQ

Q: Payment methods?

A: T/T, Paypal and Western union etc.

For samples: payment in advance.

For mass production: 50% deposit and 50% balance before shipment.

Q: What is the lead time of the products?

A:Samples in stock will be sent within 3 days after payment.

Two to Four weeks for mass production

Q: How long is the warranty period?

A: Generally the warranty period is one year. It depends on different products.

Q: What is the Product MOQ?

A: Different product has the different MOQ, please contact us sales for detailed information.

Q: What's your after-sale service?

A: If any problems, you will get our reply within 24 hours. Solution will be offered instantly by our professional technical team.

Q: Can you provide OEM service?

A: yes, we can provide both OEM and ODM service,can customize products according to the drawings you supply

Q: How can I trust your product quality?

A: The company has advanced the incoming inspection, on-line test and reliability test equipment and system, the company products through the ROHS,CE testing



Shenzhen ChengHao Optoelectronic Co., Ltd.



+86 755-27806536



add@chenghaolcm.com



chenghaolcd.com

7th floor, building C5, Hengfeng Industrial City, Hangcheng street, Bao'an District, Shenzhen