



1.8inch Colour LCD Module 128*160 Dots With 4line SPI Interface

Our Product Introduction

Basic Information

- Place of Origin: ShenZhen, China
- Brand Name: Chenghao/Oem
- Certification: ROHS ISO9001 CE
- Model Number: CH180QQ19A
- Minimum Order Quantity: 100 pcs
- Price: /
- Packaging Details: All the products are packed in right way to keep it safe. For small sizes of products we use tray + carton, For bigger sizes we use foam slot + carton. we also design packages according to customers' requirements
- Delivery Time: 7-15 working days
- Payment Terms: T/T
- Supply Ability: 300Kpcs/month

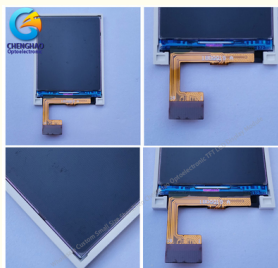


Product Specification

- Product Name: 1.8" Colour Lcd Module
- LCD Type: 1.77"TFT
- Dot Arrangement: 128(RGB)×160 Dots
- Color Filter Array: RGB Vertical Stripe
- Display Mode: TN / Transmissive / Normally White
- Viewing Direction: 6 O'clock
- GrayScaleInversiondirection: 12 O'clock
- Driver IC: ST7735S
- Highlight: 1.8inch Colour LCD Module,
ST7735S Colour LCD Module,
1.8 Inch LCD Module



More Images



Product Description

1.8inch Colour LCD Module 128*160 Dots With 4line SPI Interface

1.8" Colour Lcd Module 128*160 Dots Rgb Screen Panel With 4line SPI Interface

1. Specification

Product Name	1.8" Colour Lcd Module	
LCD type	1.77"TFT	--
Dot arrangement	128(RGB)×160	dots
Color filter array	RGB vertical stripe	--
Display mode	TN / Transmissive / Normally White	--
Viewing Direction	6o'clock	--
GrayScaleInversiondirection	12o'clock	--
Driver IC	ST7735S	--
Module size	34.7(W)×46.7(H)×2.3(T)	mm
Active area	28.032(W)×35.04(H)	mm

2. Description

Product Name:

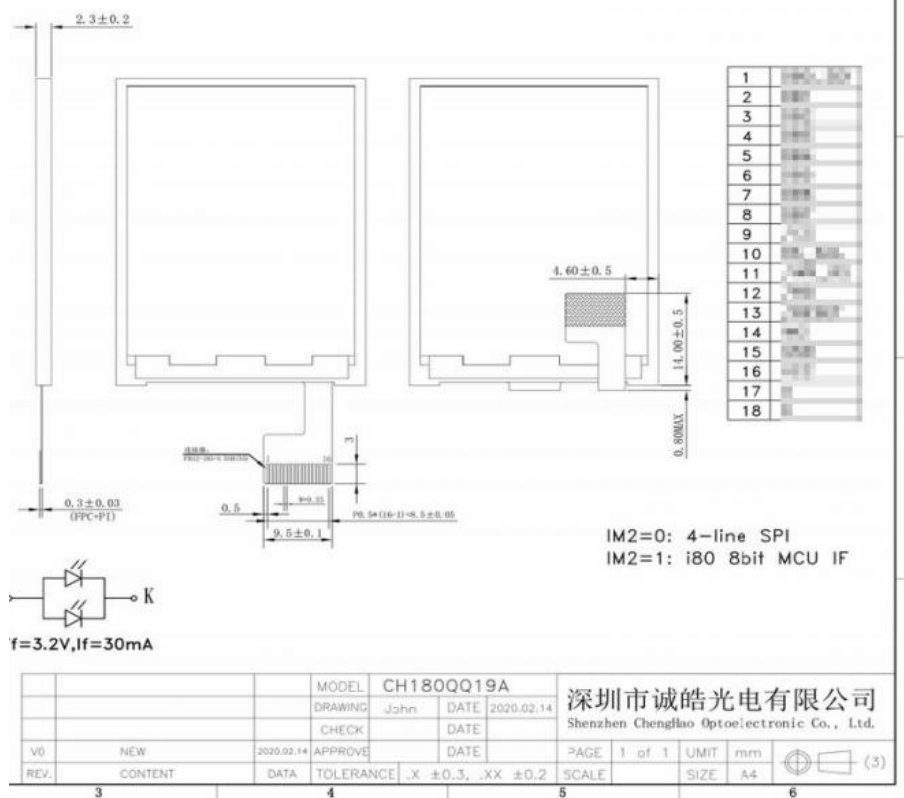
1.8" Colour Lcd Module 128*160 Dots Rgb Screen Panel With 4line SPI Interface

- * 1.8-inch color screen display
- * 128(RGB)*160 resolution, clear display
- * Using 4line SPI 8-bit8080-series system interface
- * Provide a rich sample program
- * Military-grade process standards, long-term stable work
- * Provide underlying driver technical support
- * Long term stable production and guaranteed supply
- * Support customized service! Customizable content includes FPC/backlight brightness/installation of touch panel, etc.

3. Drawings

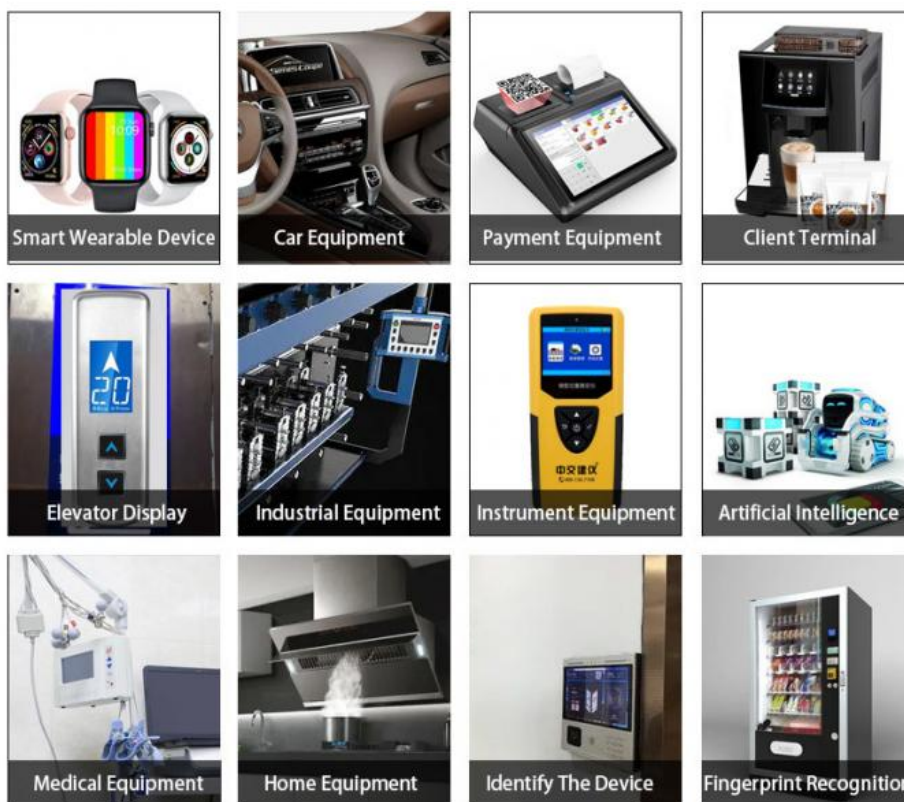
Notes:

- (1) Display Type : 1.8" TFT
- (2) Viewing Direction : 6:00
- (3) Lcd Drive IC : ST7735S
- (4) Polarizer Mode : Transmissive / Positive
- (5) Operating Temp : -20~70 °C
- (6) Storage Temp : -30~80 °C
- (7) Unmarker Tolerance: ±0.20
- (8) Protection : ROHS



4. Application

Products are widely used in general communications, household appliances, industrial control, medical equipment, POS machines, instruments, meters, GPS navigation, digital photo frames, netbooks, financial electronics, communication electronics, consumer electronics, information appliances, culture, education, sports and entertainment, etc. field. Such as attendance machine, fingerprint device, access control machine, stock machine, walkie-talkie, video doorbell, learning machine, point reading machine, GPS navigator, and so on .



5. Our Product

(1). Module

* Size: 1.14"/ 1.47"/1.44"/1.50"/1.54"/1.77"/1.80"/2.0"/2.1"/2.31"/2.40"/2.80"/3.50"/3.90"/3.95"/3.97"/3.98"/4.0"/4.3"/5.0"/5.5"/6.0"/7.0"/8.0"/9.0"/10.1"/12.3"

- * Shape: Round shape/Square(Horizontal/vertical)
- * Interface: MIPI / RGB/ SPI / MCU
- * Number of Dots: Optional
- * Brightness
- Regular: 100-500 nits
- Sun Readable: 500-1000 nits
- (2). Touch Panel
- * Touch Type: Non touch / Resistive touch / Capacitive touch
- * Interface Type: I2C / USB
- (3). Logo: Silk-screened/laser Engraved
- (4). Glass: Anti-Reflective/Anti Glare/Vandal-resistant
- (5). Interface: HDMI/VGA/DVI/USB/BNC

6. FAQ

Q: Payment methods?

A: T/T, Paypal and Western union etc.
For samples: payment in advance.
For mass production: 50% deposit and 50% balance before shipment.

Q: What is the lead time of the products?

A: Samples in stock will be sent within 3 days after payment.
Two to Four weeks for mass production

Q: How long is the warranty period?

A: Generally the warranty period is one year. It depends on different products.

Q: What is the Product MOQ?

A: Different product has the different MOQ, please contact us sales for detailed information.

Q: What's your after-sale service?

A: If any problems, you will get our reply within 24 hours. Solution will be offered instantly by our professional technical team.

Q: Can you provide OEM service?

A: yes, we can provide both OEM and ODM service, can customize products according to the drawings you supply

Q: How can I trust your product quality?

A: The company has advanced the incoming inspection, on-line test and reliability test equipment and system, the company products through the ROHS, CE testing



Shenzhen ChengHao Optoelectronic Co., Ltd.



+86 755-27806536



add@chenghaolcm.com



chenghaolcd.com

7th floor, building C5, Hengfeng Industrial City, Hangcheng street, Bao'an District, Shenzhen