



1.14inch Small IPS LCD Display 135*240 Resolution With 4 Lines 8bit SPI

Our Product Introduction

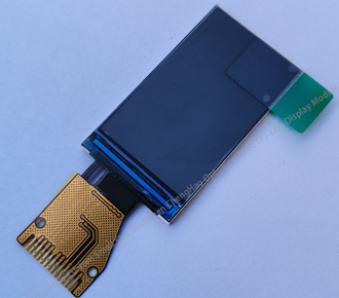
Basic Information

- Place of Origin: ShenZhen, China
- Brand Name: Chenghao/Oem
- Certification: ROHS ISO9001 CE
- Model Number: CH114QV01A
- Minimum Order Quantity: 100 pcs
- Price: /
- Packaging Details: All the products are packed in right way to keep it safe. For small sizes of products we use tray + carton, For bigger sizes we use foam slot + carton. we also design packages according to customers' requirements
- Delivery Time: 7-15 working days
- Payment Terms: T/T
- Supply Ability: 300Kpcs/month



Product Specification

- Product Name: 1.14inch Small Lcd Display Screens
- LCD Type: 1.14"TFT
- Dot Arrangement: 135(RGB)×240
- Color Filter Array: RGB Vertical Stripe
- Display Mode: IPS/ Transmissive / NormallyBlack
- Viewing Direction: 80/80/80/80
- Driver IC: ST7789V
- Module Size: 17.6(H)×31.0(V)×1.6(T) Mm
- Highlight: 1.14inch IPS LCD Display,
ST7789V IPS LCD Display,
1.14inch Small LCD Display Screens



Product Description

1.14inch Small IPS LCD Display 135*240 Resolution With 4 Lines 8bit SPI

1.14inch Small Lcd Display Screens 135*240 Resolution TFT module with 4-lines_8bit SPI

1. Specification

Product Name	1.14inch Small Lcd Display Screens
Resolution	135×240 dots
Viewing Direction	Free Viewing angle
Outline Dimension	17.6(H)×31.0(V)×1.6(T) mm
Display Area	14.864(H)×24.912(V) mm
Driver IC	ST7789V
Operating temperature	-20~+70 °C
Storage temperature	-30~+80 °C
Pixel Pitch	0.1101(H)×0.1038(V) mm
Backlight Type and Color	1White LED

2. Description

Product Name: << 1.14inch Small Lcd Display Screens 135*240 Resolution TFT module with 4-lines_8bit SPI >>

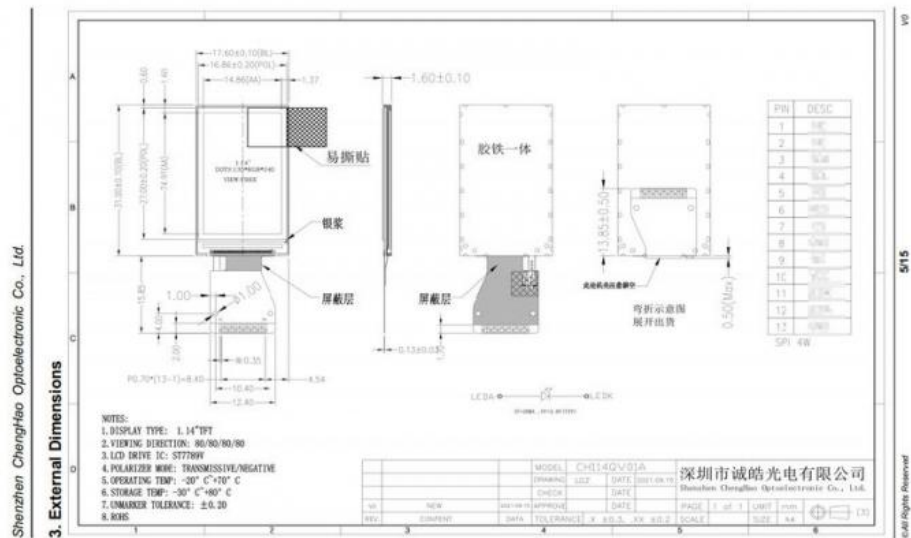
CH114QV01A is a TFT-LCD module. It is composed of a TFT-LCD panel, driver IC, FPC, a back light unit. The 1.14 display area contains 135*240 pixels. This product accords with RoHS environmental criterion.



3. Drawings

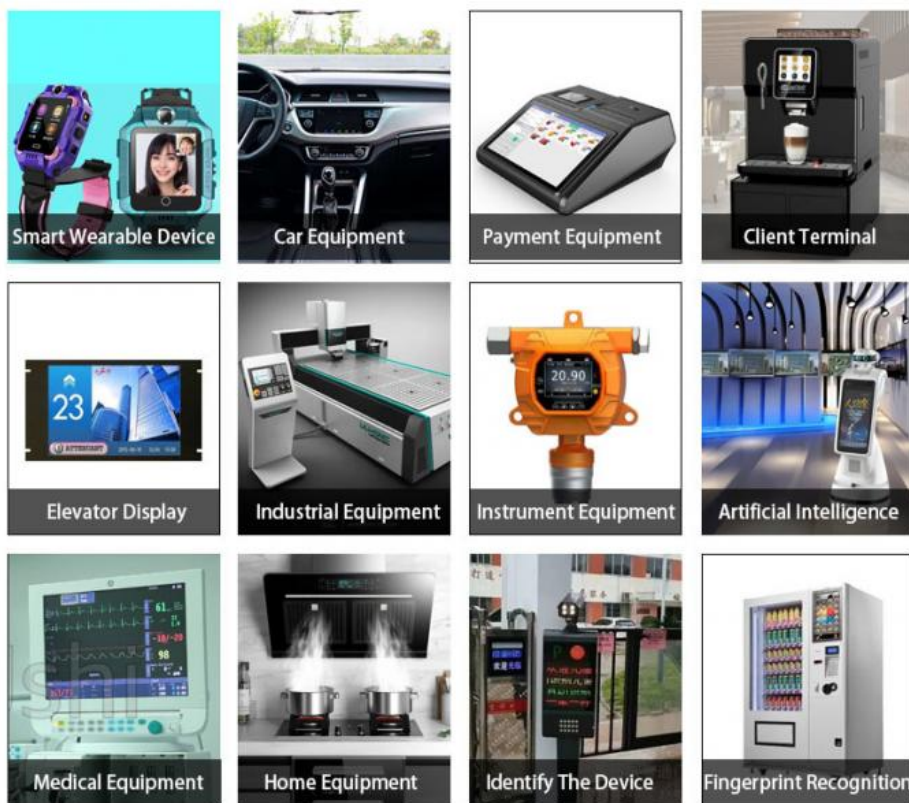
Notes:

- (1) Display Type : 1.14inch TFT
- (2) Viewing Direction :all viewing angle
- (3) Lcd Drive IC :ST7789V
- (4) Polarizer Mode : Transmissive / Negative
- (5) Operating Temp : -20~70 °C
- (6) Storage Temp : -30~80 °C
- (7) Unmarker Tolerance: ±0.20
- (8) Protection : ROHS



4. Application

Products are widely used in general communications, household appliances, industrial control, medical equipment, POS machines, instruments, meters, GPS navigation, digital photo frames, netbooks, financial electronics, communication electronics, consumer electronics, information appliances, culture, education, sports and entertainment, etc. field. Such as attendance machine, fingerprint device, access control machine, stock machine, walkie-talkie, video doorbell, learning machine, point reading machine, GPS navigator, and so on.



5. Why Choose Us ?

1. We have a professional technical team with rich TFT-LCD work experience.
2. We have many years of experience in global customer cooperation, and we have the ability to solve the needs of most customers' personalized customized products.
3. We have advanced tft-lcd production equipment and a first-class production team, which can provide customers with high-quality products.
4. We are equipped with a professional after-sales service team, which can provide customers with a full range of after-sales services.
5. We provide a full range of products and services, including display screens and touch screens, Technical support and customization.
6. We manage strictly in accordance with the ISO9001 management system, and our products conform to Rosh Certification.

6. FAQ

Q1: Do you accept customization displays and touch screens?

A: Sure, you can customization the FPC, Backlight and the touch screen.

Q2: What type of interface is your display screen?

A: Small sized of displays generally support SPI,MCU,RGB,MIPI.Medium sized displays generally support LVDS,MIPI,EDP.Different specifications use different interfaces.

Q3: Do you used capacitive touch screen or resistive touch screen.

A: We have capacitive touch screen and resistive touch screen .

Q4: What is your sample policy?

A: If there is stock,you can sample at any time,if there is no stock,it will take some time,and then wait for the materials to come back to sample. But the customer needs to pay the sample fee and express fee.

Q5: How long is your lead time for mass production?

A: It takes about 20 - 45 working days for mass production,depending on the model and order quantity.

Q6: How to ensure long-term stable delivery?

A: First,we will recommend products that can be delivered for a long time to customers,and second,we will have a large number of stocks in advance for a long time.

Q7: What is your mode of payment for mass production?

A: Generally,after receiving 50%-100% deposit from customers,they begin to prepare materials. Delivery is about 5 working days after receipt of the final payment.

Q8: Will you inspect the goods before delivery?

A: Yes, we'll ship the goods after 100% inspection.

Q9: How long is your warranty perio

A: We guarantee the quality for one year.



Shenzhen ChengHao Optoelectronic Co., Ltd.



+86 755-27806536



add@chenghaolcm.com



chenghaolcd.com

7th floor, building C5, Hengfeng Industrial City, Hangcheng street, Bao'an District, Shenzhen