



Industrial Open Frame 3.2 Inch TFT LCD Module with SPI Interface

Our Product Introduction

Basic Information

- Place of Origin: ShenZhen, China
- Brand Name: Chenghao/Oem
- Certification: ROHS ISO9001 CE
- Model Number: CH320QV15A-T
- Minimum Order Quantity: 100 pcs
- Price: /
- Packaging Details: All the products are packed in right way to keep it safe. For small sizes of products we use tray + carton, For bigger sizes we use foam slot + carton. we also design packages according to customers' requirements
- Delivery Time: 7-15 working days
- Payment Terms: T/T
- Supply Ability: 300Kpcs/month



Product Specification

- Product Name: 3.2 Inch Industrial Open Frame Monitor
- LCD Type: 3.2" TFT
- Dot Arrangement: 240(RGB)×320 Dots
- Color Filter Array: RGB Vertical Stripe
- Display Mode: TN / Transmission/ Normally White
- Viewing Direction: 6o'clock
- Driver IC: ILI9341
- Highlight: 3.2 Inch TFT LCD Module, ILI9341 TFT LCD Module, 3.2 Inch Industrial TFT Display



More Images



Product Description

Industrial Open Frame 3.2 Inch TFT LCD Module With SPI Interface

3.2 Inch Industrial Open Frame Monitor 240*320 Resolution 8 Bit 9 Bit Spi Interface TFT Lcd Module

1. Specification

ITEM	STANDARD VALUES	UNITS
LCD type	3.2" TFT	--
Dot arrangement	240(RGB)×320	dots
Color filter array	RGB vertical stripe	--
Display mode	TN / Transmission/ Normally White	--
Viewing Direction	6o'clock	--
Driver IC	ILI9341	--
Module size	54.34(W)×77.7(H)×3.5(T)	mm
Active area	48.6(W)×64.8(H)	mm
Dot pitch	0.2025(W)×0.2025(H)	mm

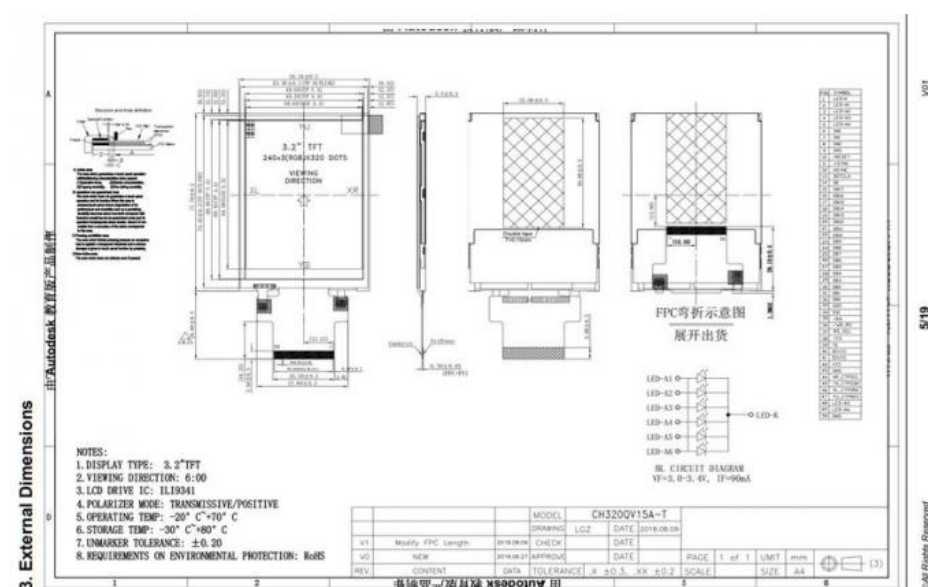
2. Description

- * CH320QV15A-T is a Transmissive type color active matrix liquid crystal display (LCD).
- * It is composed of a TFT LCD panel, driver IC, FPC, backlight, RTP.
- * It is 240*320 resolution TFT LCD module.
- * Backlight with different brightness options from 200 - 1500cd/m2 are available.
- * Specific touch panel can be designed & customized.
- * RoHS & REACH compliant.
- * If you can't find a suitable one, contact us to get a recommendation.

3. Drawings

Notes:

- (1) Display Type : 3.2" TFT
- (2) Viewing Direction : 6:00
- (3) Lcd Drive IC : ILI9341
- (4) Polarizer Mode : Transmissive / Positive
- (5) Operating Temp : -20~70 °C
- (6) Storage Temp : -30~80 °C
- (7) Unmarker Tolerance: ±0.20
- (8) Protection : ROHS



4. Application

Products are widely used in general communications, household appliances, industrial control, medical equipment, POS machines, instruments, meters, GPS navigation, digital photo frames, netbooks, financial electronics, communication electronics, consumer electronics, information appliances, culture, education, sports and entertainment, etc. field. Such as meter, Charging Pile, Data Collector, Monitoring equipment, Medical instruments, Pos Machine, Telephone, Testing equipment, Ventilator, and so on.



5. Our Service

- (1) We are a professional tft display production supplier, we have our own factory, which can provide personalized customization for your project;
- (2) We have a professional R&D team. During your use of our products, if you encounter any technical problems about the product, you can contact us, and our technical engineers will provide you with remote technical support at any time;
- (3) Our customer service is online 24 hours a day. If you have any questions, you can contact us at any time by email or international phone;
- (4) Engaging in international trade for a long time has accumulated rich experience for our products to be exported to the world, which ensures that our cooperation with you will be smoother and more pleasant!
- (5) All of our products have strict quality tests before they leave the factory and are in line with CE/ROHS certification, which will ensure that the goods delivered to you are products that meet your requirements.
- (6) We have long-term cooperation with many international couriers. These couriers are cheaper under the premise of ensuring timeliness and cargo safety, which will save you a lot of costs.

6. FAQ

Q1: Do you accept customization displays and touch screens?

A: Sure, you can customize the FPC, Backlight and the touch screen.

Q2: What type of interface is your display screen?

A: Small sized displays generally support SPI, MCU, RGB, MIPI. Medium sized displays generally support LVDS, MIPI, EDP. Different specifications use different interfaces.

Q3: Do you use capacitive touch screen or resistive touch screen?

A: We have capacitive touch screen and resistive touch screen.

Q4: What is your sample policy?

A: If there is stock, you can sample at any time, if there is no stock, it will take some time, and then wait for the materials to come back to sample. But the customer needs to pay the sample fee and express fee.

Q5: How long is your lead time for mass production?

A: It takes about 20 - 45 working days for mass production, depending on the model and order quantity.

Q6: How to ensure long-term stable delivery?

A: First, we will recommend products that can be delivered for a long time to customers, and second, we will have a large number of stocks in advance for a long time.

Q7: What is your mode of payment for mass production?

A: Generally, after receiving 50%-100% deposit from customers, they begin to prepare materials. Delivery is about 5 working days after receipt of the final payment.

Q8: Will you inspect the goods before delivery?

A: Yes, we'll ship the goods after 100% inspection.

Q9: How long is your warranty period?

A: We guarantee the quality for one year.



Shenzhen ChengHao Optoelectronic Co., Ltd.



+86 755-27806536



add@chenghaolcm.com



chenghaolcd.com

