



Square 3.5inch Small LCD Touch Screen 320x240 With HX8238D Driver IC

Our Product Introduction

Basic Information

- Place of Origin: ShenZhen, China
- Brand Name: Chenghao/Oem
- Certification: ROHS ISO9001 CE
- Model Number: CH350QV01B
- Minimum Order Quantity: 100 pcs
- Price: /
- Packaging Details: All the products are packed in right way to keep it safe. For small sizes of products we use tray + carton, For bigger sizes we use foam slot + carton. we also design packages according to customers' requirements
- Delivery Time: 7-15 working days
- Payment Terms: T/T
- Supply Ability: 300Kpcs/month



Product Specification

- Product Name: 3.5 Inch Square Lcd Screen
- Luminance: 300cd/m2
- Interface: RGB
- Weight: TBD G
- Back Light: 6 White LED In Serial
- Storage Temperature: -30 ~ +80 °C
- Operating Temperature: -20 ~ +70 °C
- Highlight: 3.5inch Small LCD Touch Screen, HX8238D Driver IC Square LCD Screen, 3.5inch TFT Display Module



More Images



Product Description

Square 3.5inch Small LCD Touch Screen 320x240 With HX8238D Driver IC

3.5 inch square lcd screen 320x240 Resolution tft display module with HX8238D Driver IC

1. Specification of 3.5 inch square lcd screen

LCD type	3.5" TFT
Dot arrangement	320(RGB)×240
Color filter array	RGB vertical stripe
Display mode	TN / Transmission / Normally White
Viewing Direction	6 o'clock
Driver IC	HX8238D
Module size	76.9(W)×63.9(H)×3.26(T)
Active area	70.08(W)×52.56(H)

2. Description of 3.5 inch square lcd screen

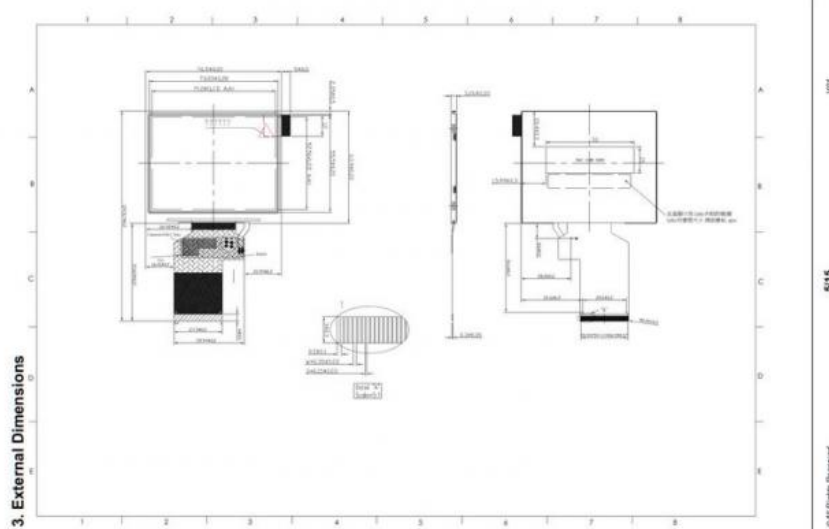
- * 3.5-inch color screen display
- * 320*240 resolution, clear display
- * Using 24bit RGB interface Interface
- * Provide a rich sample program
- * Military-grade process standards, long-term stable work
- * Provide underlying driver technical support
- * Long term stable production and guaranteed supply
- * Support customized service! Customizable content includes FPC/backlight brightness/installation of touch panel, etc.

** We also have several other MP products with similar configurations, but with different interface, pin map, FPC shape, outline dimension, brightness, etc.

Please contact us to provide datasheet for your checking.

We can according to your demand to customized your touch screen like customized cover glass's shape, ink-printing color, touch with water, touch with gloves and so on.

3. Drawings of 3.5 inch square lcd screen



4. Why Choose Us ?

1. We have a professional team with more than 15 years of TFT-LCD work experience.
2. A strong team of designers and sales team.
3. Own the professional skill and updated machine.
4. All-round after sales services can be provided to our clients.

5. Application



6. Our Product

(1). Module

* Size: 1.44"/1.50"/1.54"/1.77"/1.80"/2.0"/2.1"/2.31"/2.40"/2.80"/3.50"/3.90"/3.95"/3.97"/3.98"/4.0"/4.3"/5.0"/5.5"/6.0"/7.0"/8.0"/9.0"/10.1"

* Shape: Round shape/Square(Horizontal/vertical)

* Interface: MIPI / RGB/ SPI / MCU

* Number of Dots: Optional

* Brightness

Regular: 100-500 nits

Sun Readable: 500-1000 nits

(2). Touch Panel

* Touch Type: Non touch / Resistive touch / Capacitive touch

* Interface Type: I2C / USB

(3). Logo: Silk-screened/ Laser Engraved

(4). Glass: Anti-Reflective/Anti Glare/Vandal-resistant



7. FAQ

Q1: Do you accept customization displays and touch screens?

A: Sure, you can customization the FPC, Backlight and the touch screen.

Q2: What type of interface is your display screen?

A: Small sized of displays generally support SPI, MCU, RGB, MIPI. Medium sized displays generally support LVDS, MIPI, EDP. Different specifications use different interfaces.

Q3: Do you used capacitive touch screen or resistive touch screen.

A: We have capacitive touch screen and resistive touch screen .

Q4: What is your sample policy?

A: If there is stock,you can sample at any time,if there is no stock,it will take some time,and then wait for the materials to come back to sample.
But the customer needs to pay the sample fee and express fee.

Q5: How long is your lead time for mass production?

A: It takes about 20 - 45 working days for mass production,depending on the model and order quantity.

Q6: How to ensure long-term stable delivery?

A: First,we will recommend products that can be delivered for a long time to customers,and second,we will have a large number of stocks in advance for a long time.

Q7: What is your mode of payment for mass production?

A: Generally,after receiving 50%-100% deposit from customers,they begin to prepare materials. Delivery is about 5 working days after receipt of the final payment.

Q8: Will you inspect the goods before delivery?

A: Yes, we'll ship the goods after 100% inspection.

Q9: How long is your warranty period?

A: We guarantee the quality for one year.



Shenzhen ChengHao Optoelectronic Co., Ltd.



+86 755-27806536



add@chenghaolcm.com



chenghaolcd.com

7th floor, building C5, Hengfeng Industrial City, Hangcheng street, Bao'an District, Shenzhen