

## 9" TFT LCD Display Module HD Screen Panel With 24bit RGB Interface

### Our Product Introduction

#### Basic Information

- Place of Origin: ShenZhen , China
- Brand Name: OEM
- Certification: ROHS ISO9001 CE
- Model Number: CH900WS01A
- Minimum Order Quantity: 100 pcs
- Price: /
- Packaging Details: All the products are packed in right way to keep it safe. For small sizes of products we use tray + carton, For bigger sizes we use foam slot + carton. we also design packages according to customers' requirements
- Delivery Time: 7 - 15 working days
- Payment Terms: T/T
- Supply Ability: 200K PCS / Month

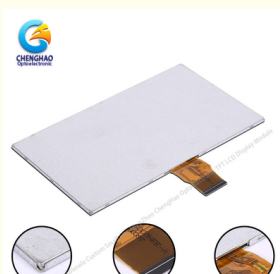


#### Product Specification

- Product Name: TFT LCD Display Module
- Module Type: 9"TFT
- Number Of Dots: 1024\*3(RGB)\*600
- Viewing Direction: 12 O'clock
- Gray Scale Inversion Direction: 6 O'clock
- Module Size: 211.1(W)\*126.5(H)\*3.5(T)mm
- TFT Active Area: 196.61(W)\*114.15(H)mm
- TFT Dot Pitch: 0.192(W)\*0.19025(H)mm
- Highlight: 9" TFT LCD Display Module, 24bit RGB LCD Display Module, ROHS Full HD LCD Panel



#### More Images



## Product Description

### 9" TFT LCD Display Module HD Screen Panel With 24bit RGB Interface

#### 1. Specification

MODEL NO.	CH900WS01A
Module type	9"TFT
Display Mode	TN/Transmissive/Normally white
Number of Dots	1024*3(RGB)*600
Viewing Direction	12 o'clock
Gray Scale Inversion Direction	6 o'clock
Module size	211.1(W)*126.5(H)*3.5(T)mm
TFT Active area	196.61(W)*114.15(H)mm
TFT Dot pitch	0.192(W)*0.19025(H)mm

#### 2. Description



CH900WS01A is a TFT-LCD module. It is composed of a TFT-LCD panel, driver IC, FPC, a back light unit. The 9.0 display area contains 1024x600 pixels and can display up to 262K colors. This product accords with RoHS environmental criterion.

#### 3. Quick Detail

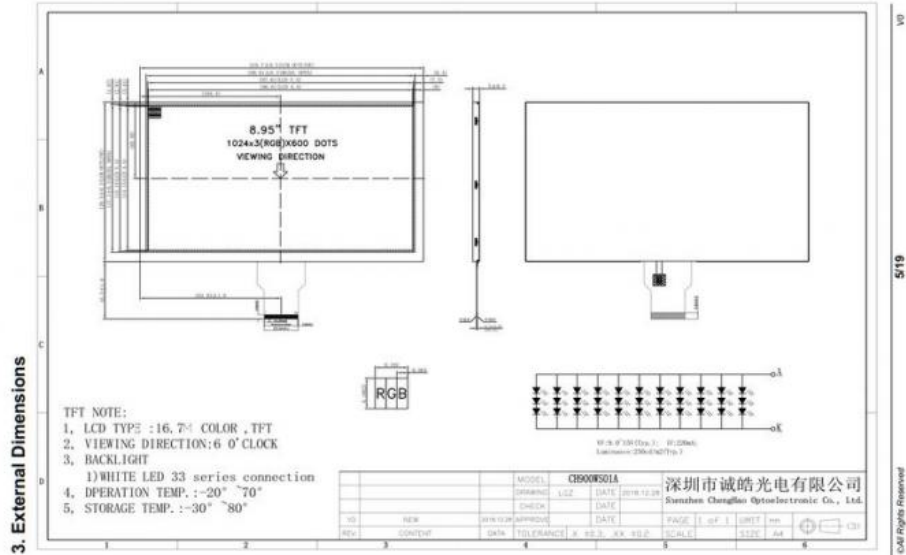
- \* LCD name: 9 Inch TFT LCD Display Module 1024\*600 HD Screen Panel With 24bit Rgb Interface
- \* Part No: CH900WS01A
- \* Size: 9 inch
- \* With touch panel or not: NO
- \* Display type: TFT
- \* Display colors: 16.7M/262K/165K
- \* Resolution (pixels): 1024(RGB)\*600
- \* Viewing direction: 12:00
- \* Display mode: TN/Transmissive/Normally white
- \* Overall size: 211.1(W)\*126.5(H)\*3.5(T)mm
- \* Viewing area: 197.61(W)\*115.15(H)mm
- \* Active Area: 196.61(W)\*114.15(H)mm
- \* Luminance: 200cd/m2
- \* Interface type: 24bit Parallel RGB Interface (optional)
- \* Connecting type: plugging type
- \* Backlight type and color: White LED

\* LED Life span: 20000h

#### 4. Drawings

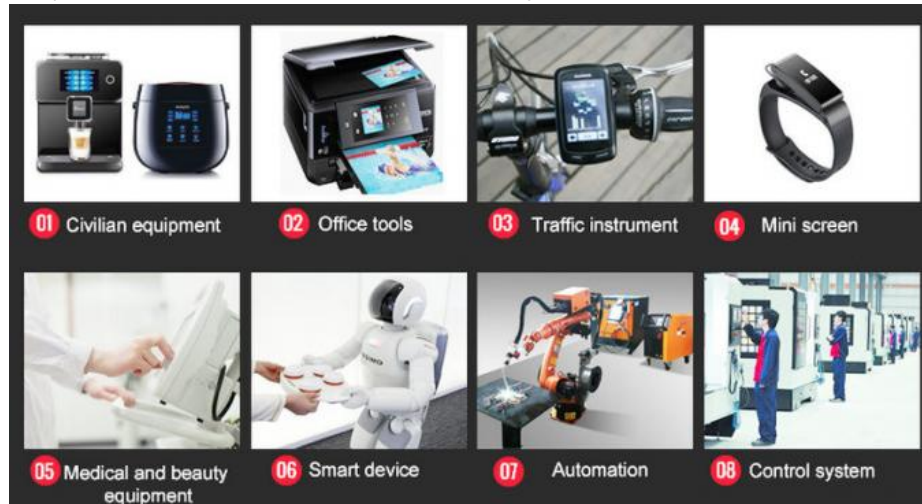
Notes:

- (1) Display Type : 9" TFT
- (2) Viewing Direction : 12 o'clock
- (3) Backlight: while LED 33 series connection
- (4) Operating Temp : -20~70 °C
- (5) Storage Temp : -30~80 °C
- (6) Unmarker Tolerance: ±0.20
- (7) Protection : ROHS



#### 5. Application

Our products are widely used for banking machines, communication tools, household appliances, automobile instruments, mobile phone, video door phone, E-book, stock mobile, MP5, tablet PC, GPS navigator and so on.



#### 6. Our Service

- (1) Fully / Semi-automated production line ensure the best quality.
- (2) Custom Design, can specially meet your needs.
- (3) Fast Delivery, about 20 days for lead time
- (4) Samples available on request; Small MOQ orders can be negotiated.
- (5) Provide best pre-sale and after-sale service to you.

#### 7. Why Choose Us ?

- (1) Professional Team (Nearly 15 years experience);
- (2) One-stop Service (from design, manufacture to after-sale service);
- (3) complete production line (80% applied to automation);
- (4) Quality assurance (CE, ROHS and so on);
- (5) Management (ISO9001, SGS)
- (6) Support customization (Driver Boards For AV, VGA, MCU and other interfaces, support LCD Screens of different sizes and resolutions)

#### 8. FAQ

##### 1.Q: Order process

A: PO is placed by clients → PI is issued by Chenghao → Payment by clients → Lead time is

confirmed by Chenghao → Shipping instruction by Clients → Delivery → Cargo tracking → Receipt of cargo.

**2.Q: Lead time ( after payment is confirmed)**

A: Sample: 1-10 working days

Volume: 3-60 working days.

**3.Q: Payment**

A: T/T , Western union, L/C, Credit card, and Cash.

**4.Q: Warranty**

A: 12 months warranty.

**5.Q:RMA Process**

A: Claimed by cliens with photos or videos → Sales rep of Chenghao confirm if have questions → Sales rep issue RMA No to clients if confirmed by QA → Return to Chenghao → Formal report after goods received by Chenghao → Clients confirm the analysis report → Proceeding as per the Report both agreed



**Shenzhen ChengHao Optoelectronic Co., Ltd.**



+86 755-27806536



add@chenghaolcm.com



chenghaolcd.com

7th floor, building C5, Hengfeng Industrial City, Hangcheng street, Bao'an District, Shenzhen