



## 4.3 Inch TFT IPS Display All Viewing Direction With RGB Interface

### Our Product Introduction

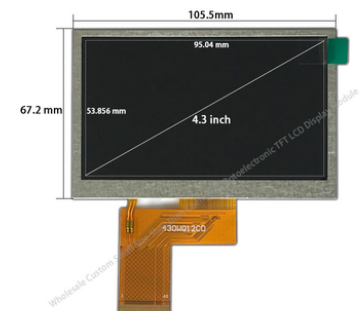
#### Basic Information

- Place of Origin: ShenZhen , China
- Brand Name: OEM
- Certification: ROHS ISO9001 CE
- Model Number: CH430WQ12D
- Minimum Order Quantity: 100 pcs
- Price: /
- Packaging Details: All the products are packed in right way to keep it safe. For small sizes of products we use tray + carton, For bigger sizes we use foam slot + carton. we also design packages according to customers' requirements
- Delivery Time: 7 - 15 working days
- Payment Terms: T/T
- Supply Ability: 200K PCS / Month

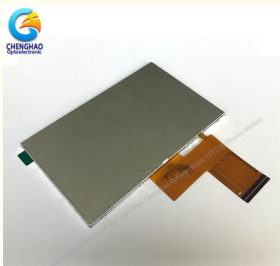


#### Product Specification

- Product Name: TFT IPS Display
- Module Type: 4.3" TFT
- Display Mode: IPS/Transmissive/Normally Black
- Number Of Dots: 480\*3(RGB)\*272
- Viewing Direction: ALL
- Module Size: 105.5(W)\*67.2(H)\*3.0(T)mm
- TFT Active Area: TFT Active Area
- Highlight: 4.3 Inch TFT IPS Display ,  
ROHS TFT IPS Display ,  
4.3inch IPS Screen Panel



#### More Images



## Product Description

### 4.3 Inch TFT IPS Display All Viewing Direction With RGB Interface

#### 1. Specification of TFT IPS Display

MODEL NO.	CH430WQ12D
Module type	4.3"TFT
Display Mode	IPS/Transmissive/Normally black
Number of Dots	480*3(RGB)*272
Viewing Direction	ALL
Module size	105.5(W)*67.2(H)*3.0(T)mm
TFT Active area	95.04(W)*53.856(H)mm

#### 2. Description of TFT IPS Display

- ChengHao Display model CH430WQ12D is a color active matrix thin film transistor (TFT) liquid crystal display (LCD) that uses amorphous silicon TFT as a switching device. This model is composed of a TFT LCD panel, a driving IC, a back-light and FPC.
- This TFT LCD has a 4.3 (Horizontal screen) inch diagonally measured active display area with 480 horizontal by 272 vertical pixel.
- The driver used for this project is the ST7282 and can display 16M / 65K / 262K (Optional) colors by R.G.B. signal input. The driver is mounted on the glass and the interconnection via FPC including components to drive the display module. Support RGB interface.
- In addition, FPC can also be customized according to customer requirements, such as modifying back-light and CTP structure, interface definition, etc.
- RoHS Compliance & Halogen Free.

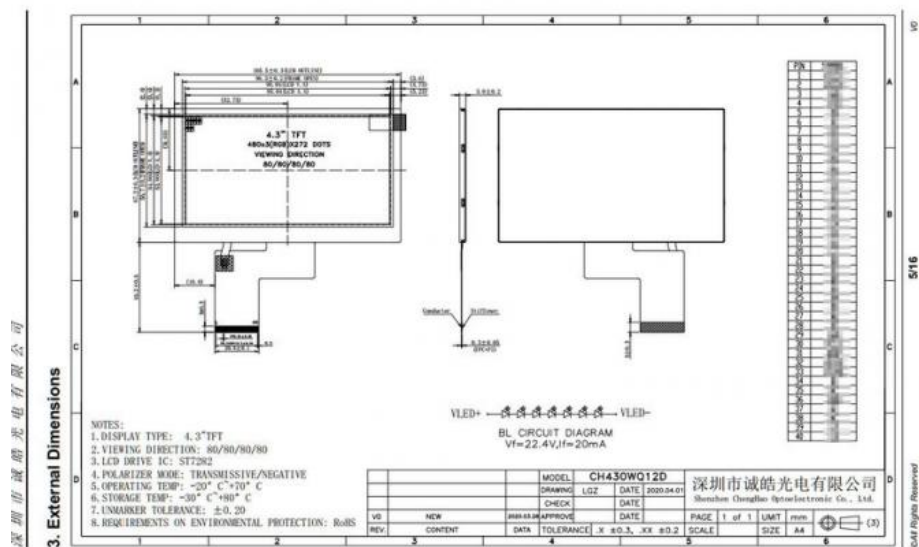
#### 3. Quick Detail of TFT IPS Display

- \* LCD name: 4.3 Inch TFT IPS Display 300cd/M2 All Viewing Direction Lcd Module With Rgb Interface
- \* Part No.: CH430WQ12D
- \* Size.: 4.3 inch
- \* With touch panel or not: NO
- \* Display type: TFT
- \* Display colors: 16.7M/262K/165K
- \* Resolution (pixels): 480(RGB)\*272
- \* Viewing direction: 80/80/80/80
- \* Controller IC: ST7282
- \* Display mode: IPS/Transmissive/Normally black
- \* Overall size: 105.5(W)\*67.2(H)\*3.0(T) mm
- \* Viewing area: 96.04(W)\*54.86(H) mm
- \* Active Area: 95.04(W)\*53.856(H) mm
- \* Luminance: 300 cd/m2
- \* Interface type: SPI/(SPI+RGB)/MCU /MIPI (optional)
- \* Pin NO: 40pins
- \* Connecting type: plugging type
- \* Backlight type and color: LED backlight/white
- \* LED Life span: 20000h

#### 4. Drawings of TFT IPS Display

Notes:

- (1) Display Type : 4.3" TFT
- (2) Viewing Direction : All
- (3) Lcd Drive IC : ST7282
- (4) Operating Temp : -20~70 °C
- (5) Storage Temp : -30~80 °C
- (6) Unmarker Tolerance: ±0.20
- (7) Protection : ROHS



## 5. Application of TFT IPS Display

4.3 inch TFT IPS Display, widely used in medical, communication, instruments and other Application.



## 6. Our Service

1. We provide one-year product after-sales guarantee service to all customers who purchase our products.
2. For any technical problems encountered by customers in the process of testing or using our products, our technical team will provide customers with remote online technical support services at any time.
3. We are a factory-type supplier with ISO certification. Our products on sale have undergone strict quality inspection and testing before shipment, and have also passed CE/ROHS certification.
4. We have a professional after-sales service team, which can provide strong guarantee and logistical technical services for your orders.
5. Replacement within 30 days after the shipment of products from us due to products' problems.
6. We have long cooperation with many shipping companies and our export volume is large. The shipping companies can offer us good discounts.
7. All goods will be inspected and tested before shipment.
8. Customer's satisfactory is most important to us. If you have any problem or questions regarding our transaction. Please contact us by Email. It will be responded within 24 hours.

## 7. Why Choose Us ?

The high quality products enable it to build a long-term relationship with world-famous enterprises in the industries

### (1) Competitive Price

Own-owned factories offer lower prices and better quality assurance.

### (2) Strong Technical Strength

We are a top supplier specializing in the production of color LCD screens. We have a technical team with rich experience in product research and development, and can provide customers with professional technical support and customized consulting services at any time, which is very important for cooperative customers with special project needs.

### (3) Long-term Partner

Products are sold to more than 40 countries, so from Chenghao Optoelectronic you can get more stable supplying promise;

### (4) Professional Service

We have a professional after-sales team that can provide you with after-sales consulting services 24 hours a day. At the same time, if you encounter any problems in the process of using our products, you can give us feedback, and our technical engineers will provide you with online remote consulting services at any time.

### (5) Quality to be ensure

All panels are 100% brand new, without false panels; All packages have labels and serial numbers for easy viewing by customers;

## 8. FAQ

**Q1: How long for the delivery time ?**

A: 1-2 weeks for samples ;

4-12 weeks for mass production;

7-10 weeks for various modules mass production.

**Q2: Do you offer custom solution?**

A: In addition to modifying displays, we offer custom LCD/FPC/PCB/TP,

LED backlight and complete assembly productions.

And we provide technical support on software and hardware.

**Q3: What is your after-sale service?**

A: Yes, we offer 12 months warranty for our products.

Damage due to misuse, ill treatment and unauthorized modifications.

and repairs are not covered by our warranty.

but we can provide repairment service after your payment.



**Shenzhen ChengHao Optoelectronic Co., Ltd.**



+86 755-27806536



add@chenghaolcm.com



chenghaolcd.com

7th floor, building C5, Hengfeng Industrial City, Hangcheng street, Bao'an District, Shenzhen