



2.8inch Square 240x320 RGB TFT LCD Display With SPI MCU Interface

Our Product Introduction

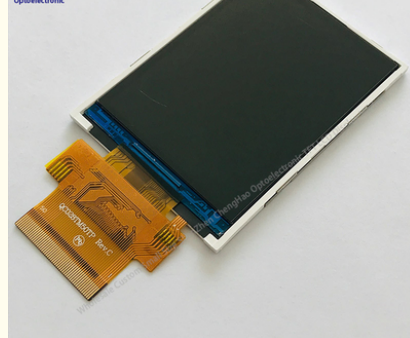
Basic Information

- Place of Origin: ShenZhen , China
- Brand Name: OEM
- Certification: ROHS ISO9001 CE
- Model Number: CH280QV07A
- Minimum Order Quantity: 100 pcs
- Price: /
- Packaging Details: All the products are packed in right way to keep it safe. For small sizes of products we use tray + carton, For bigger sizes we use foam slot + carton. we also design packages according to customers' requirements
- Delivery Time: 7 - 15 working days
- Payment Terms: T/T
- Supply Ability: 200K PCS / Month

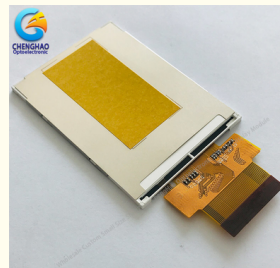
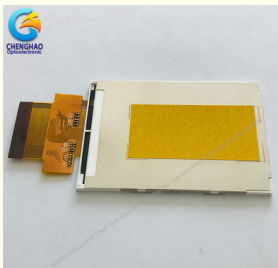
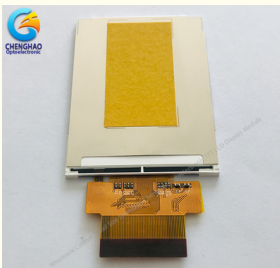


Product Specification

- Product Name: Square LCD Display
- Type: TFT
- Viewing Direction: 6 O'clock
- Operating Temperature: 20°C~70°C
- Storage Temperature: 30°C~80°C
- Driver IC: ILI9341V
- Brightness: 300 Cd/m2
- Highlight: 240x320 RGB TFT LCD Display, 2.8inch TFT LCD Module, 2.8inch TFT LCD Display



More Images



Product Description

2.8inch Square 240x320 RGB TFT LCD Display With SPI MCU Interface

1. Specification of Small LCD Display Screens

Module Size	2.8 inches
Type:	TFT
Viewing Directio	6 o' Clock
Operating temperature:	20°C~70°C
Storage temperature:	30°C~80°C
Driver IC:	ILI9488
Interface type:	4line SPI/3line SPI 8/9/16/18bit MCU interface SPI + 6/16/18bit RGB interface
Brightness:	150 CD/

2. Description of Small LCD Display Screens

- * 2.8-inch color screen display
- * 240*320 resolution, clear display
- * Using SPI / MCU / SPI+RGB Interface (Optional)
- * Provide a rich sample program
- * Military-grade process standards, long-term stable work
- * Provide underlying driver technical support
- * Long term stable production and guaranteed supply
- * Support customized service! Customizable content includes FPC/backlight brightness/installation of touch panel, etc.

3. Features of Small LCD Display Screens

Module features

- Interface:
MCU/SPI / SPI+RGB(optional)
Can be designed as customer's requirements.
(Including FPC shape and size can be customized)
- BLU:
4*LED in parrel. IBL=60mA, VBL=3.2V;
Can be designed as requirements.
- LCM outline dimension:
50.0(W)*69.2(H)*2.45(T)mm
Can be customized as requirements.

Lens features

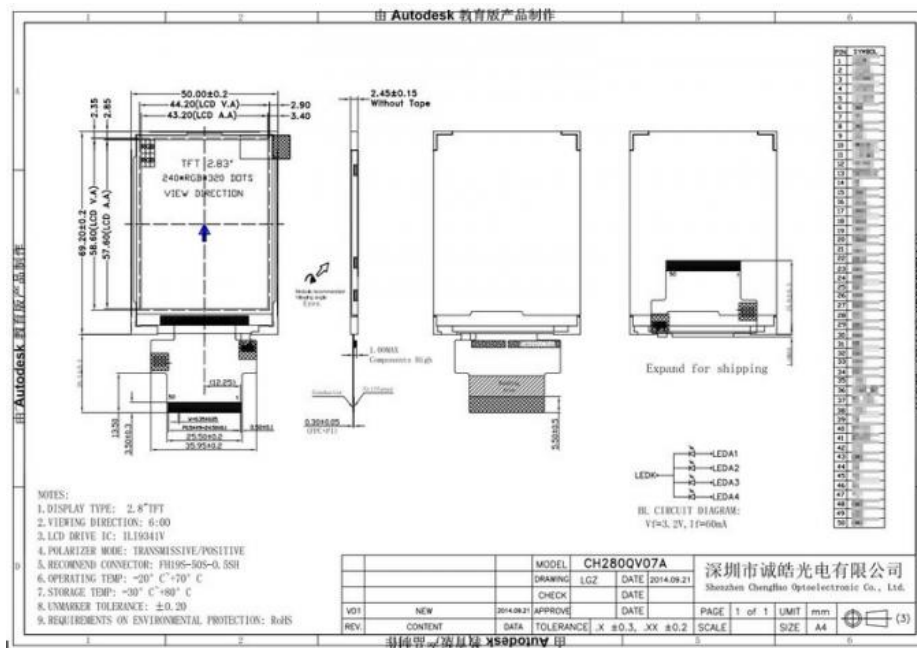
- Shape : Irregular and hole
- Color: Silk printing, Logo
- Glass Materials: Glass, PMMA
- Treatments: AG, AR, AF, Anti-explosion
- Thickness: 0.55mm, 0.7mm, 1.0mm, 1.1mm, 1.8mm, 2.0mm, 3.0mm, 4.0mm, 5.0mm, 6.0mm

We also have several other MP products with similar configurations, but **with different** capacitive & touch screen & interface & pin map & FPC shape & outline dimension & brightness & thickness etc.
Please contact us to provide datasheet for your checking.

4. Drawings of Small LCD Display Screens

Notes:

- (1) Display Type : 2.8" TFT
- (2) Viewing Direction : 6:00
- (3) Lcd Drive IC : ILI9341V
- (4) Polarizer Mode : Transmissive/Positive
- (5) Operating Temp : -20~70 °C
- (6) Storage Temp : -30~80 °C
- (7) Unmarker Tolerance: ±0.20
- (8) Protection : ROHS



5. Application of Small LCD Display Screens

2.8 inch Small LCD Display Screens,widely used in medical,communication,instruments and other Application.



6. Our Service

1. We provide one-year product after-sales guarantee service to all customers who purchase our products.
2. For any technical problems encountered by customers in the process of testing or using our products, our technical team will provide customers with remote online technical support services at any time.
3. We are a factory-type supplier with ISO certification. Our products on sale have undergone strict quality inspection and testing before shipment, and have also passed CE/ROHS certification.
4. We have a professional after-sales service team, which can provide strong guarantee and logistical technical services for your orders.
5. Replacement within 30 days after the shipment of products from us due to products' problems.
6. We have long cooperation with many shipping companies and our export volume is large. The shipping companies can offer us good discounts.
7. All goods will be inspected and tested before shipment.
8. Customer's satisfactory is most important to us. If you have any problem or questions regarding our transaction. Please contact us by Email. It will be responded within 24 hours.

7. Why Choose Us ?

The high quality products enable it to build a long-term relationship with world-famous enterprises in the industries

1. We have a professional technical team with rich TFT-LCD work experience.
2. We have many years of experience in global customer cooperation, and we have the ability to solve the needs of most customers' personalized customized products.
3. We have advanced tft-lcd production equipment and a first-class production team, which can provide customers with high-quality products.
4. We are equipped with a professional after-sales service team, which can provide customers with a full range of after-sales services.
5. We provide a full range of products and services, including display screens and touch screens, Technical support and customization.
6. We manage strictly in accordance with the ISO9001 management system, and our products conform to Rosh Certification.

8. FAQ

Q:Payment methods?

T/T, Paypal and Western union etc.

For samples: payment in advance.

For mass production: 50% deposit and 50% balance before shipment.

Q: What is the lead time of the products?

A:Samples in stock will be sent within 3 days after payment.

Two to Four weeks for mass production.

Q:How long is the warranty period?

A:Generally the warranty period is one year. It depends on different products.

Q:What is the Product MOQ?

A:Different product has the different MOQ, please contact us sales for detailed information.

Q: What's your after-sale service?

A: If any problems, you will get our reply within 24 hours. Solution will be offered instantly by our professional technical team.

Q:Can you provide OEM service?

A:yes, we can provide both OEM and ODM service,can customize products according to the drawings you supply.

Q: How can I trust your product quality?

A:The company has advanced the incoming inspection, on-line test and reliability test equipment and system, the company products through the ROHS,CE testing



Shenzhen ChengHao Optoelectronic Co., Ltd.



+86 755-27806536



add@chenghaolcm.com



chenghaolcd.com

7th floor, building C5, Hengfeng Industrial City, Hangcheng street, Bao'an District, Shenzhen