



## ILI9341V IC 2.8 Inch Small LCD Display Screens 240\*320 TFT Module

### Our Product Introduction

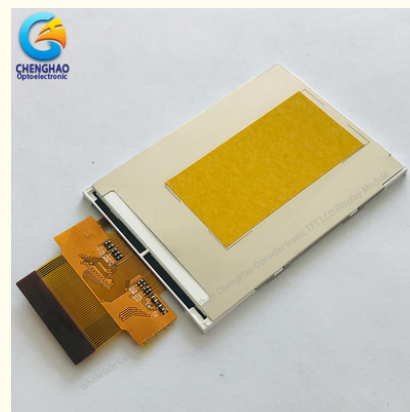
#### Basic Information

- Place of Origin: ShenZhen , China
- Brand Name: OEM
- Certification: ROHS ISO9001 CE
- Model Number: CH280QV07A
- Minimum Order Quantity: 100 pcs
- Price: /
- Packaging Details: All the products are packed in right way to keep it safe. For small sizes of products we use tray + carton, For bigger sizes we use foam slot + carton. we also design packages according to customers' requirements
- Delivery Time: 7 - 15 working days
- Payment Terms: T/T
- Supply Ability: 200K PCS / Month



#### Product Specification

- Product Name: Small LCD Display Screens
- LCD Type: 2.8" TFT
- Dot Arrangement: 240\*3(RGB)\*320
- Driver IC: ILI9341V
- Module Size: 50.0(W)\*69.2(H)\*2.45(T)
- Active Area: 43.2(W)\*57.6(H)
- Highlight: 2.8inch Small LCD Display Screens, ILI9341V Small LCD Display Screens, ILI9341V 2.8 Inch TFT Display



#### More Images



## Product Description

### ILI9341V IC 2.8 Inch Small LCD Display Screens 240\*320 TFT Module

#### 1. Specification of Small LCD Display Screens

ITEM	STANDARD VALUES	UNITS
LCD type	2.8"TFT	--
Dot arrangement	240*3(RGB)*320	dots
Driver IC	ILI9341V	--
Module size	50.0(W)*69.2(H)*2.45(T)	mm
Active area	43.2(W)*57.6(H)	mm
Operating temperature	- 20 ~ + 70	°C
Storage temperature	- 30 ~ + 80	°C
Back Light	4 White LED In Paralle	--
Weight	TBD	g

#### 2. Description of Small LCD Display Screens

- ChengHao Display model CH280QV07A is a color active matrix thin film transistor (TFT) liquid crystal display (LCD) that uses amorphous silicon TFT as a switching device. This model is composed of a TFT LCD panel, a driving IC, a back-light and FPC.
- This TFT LCD has a 2.8 (Vertical screen) inch diagonally measured active display area with 240 horizontal by 320 vertical pixel. The driver used for this project is the ILI9341V and can display 65K/262K colors by R.G.B. signal input. The driver is mounted on the glass and the interconnection via FPC including components to drive the display module. Support RGB interface.
- In addition, FPC can also be customized according to customer requirements, such as modifying back-light and CTP structure, interface definition, etc.
- RoHS Compliance & Halogen Free.

#### 3. Features of Small LCD Display Screens

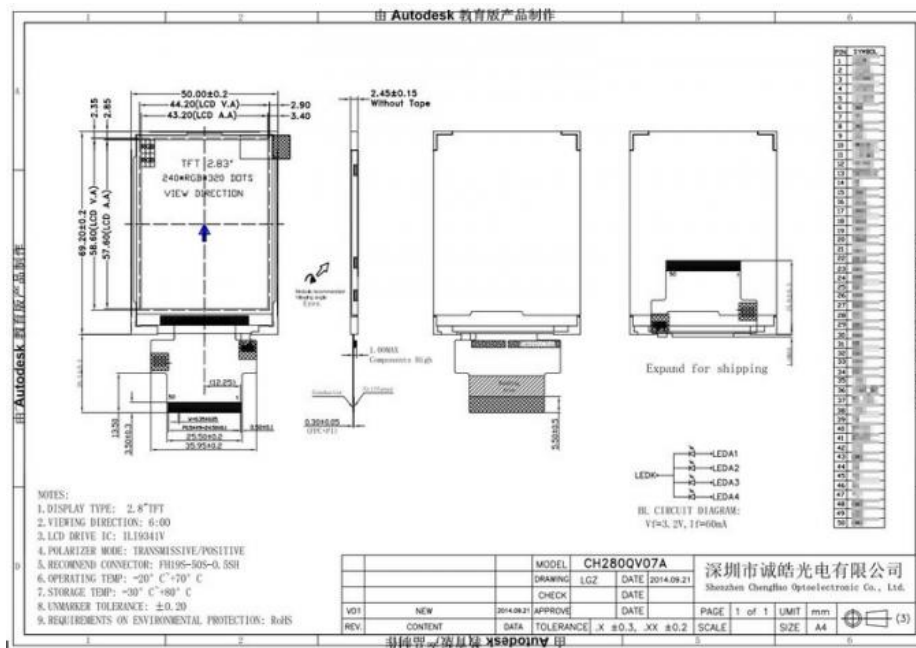
- \* Interface (Optional):  
4line SPI/3line SPI  
8/9/16/18bit MCU  
SPI + 6/16/18bit RGB  
Can be designed as customer's requirements.(Including FPC shape and size can be customized)
- \* BLU:  
4 LED (4\*LED in parallel) IBL= 60mA, VBL= 3.2 V;  
Can be designed as requirements.
- \* LCM outline dimension:  
50.0(H)\*46.9.2(V)\*2.45(T) mm  
Can be customized as requirements.
- \* Touch Panel  
This model does not have a touch panel, touch panel can be customized as requirements.
- \* Temperature  
Working : -10~60  
Storing: -20~70
- \* Weight : TBD g

We also have several other MP products with similar configurations, but **with different** capacitive & touch screen & interface & pin map & FPC shape & outline dimension & brightness & thickness etc. Please contact us to provide datasheet for your checking.

#### 4. Drawings of Small LCD Display Screens

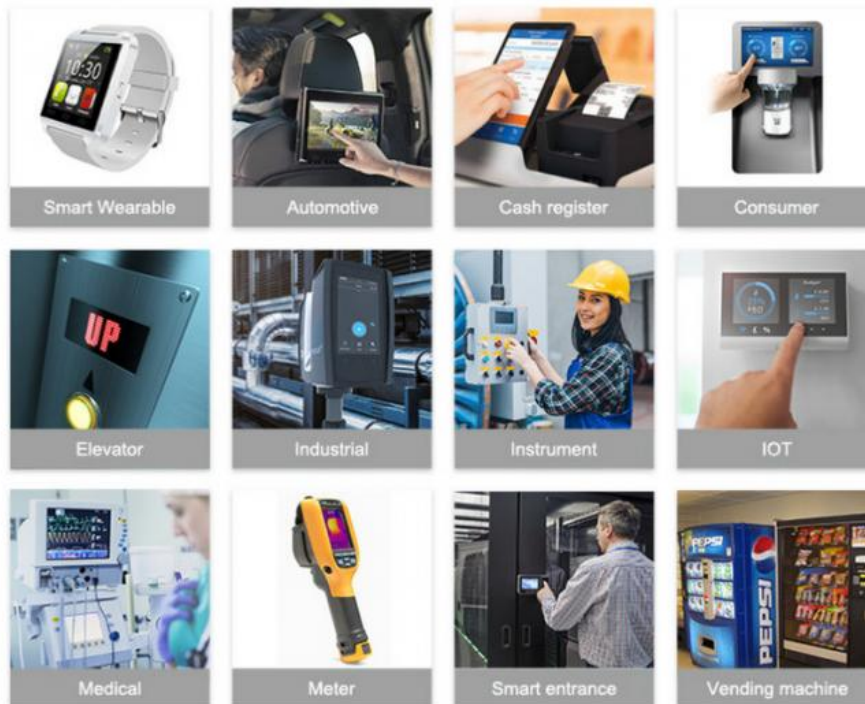
Notes:

- (1) Display Type : 2.8" TFT
- (2) Viewing Direction : 6:00
- (3) Lcd Drive IC : ILI9341V
- (4) Polarizer Mode : Transmissive/Positive
- (5) Operating Temp : -20~70 °C
- (6) Storage Temp : -30~80 °C
- (7) Unmarker Tolerance: ±0.20
- (8) Protection : ROHS



## 5. Application of Small LCD Display Screens

2.8 inch Small LCD Display Screens, widely used in medical, communication, instruments and other Application.



## 6. Our Service

1. We provide one-year product after-sales guarantee service to all customers who purchase our products.
2. For any technical problems encountered by customers in the process of testing or using our products, our technical team will provide customers with remote online technical support services at any time.
3. We are a factory-type supplier with ISO certification. Our products on sale have undergone strict quality inspection and testing before shipment, and have also passed CE/ROHS certification.
4. We have a professional after-sales service team, which can provide strong guarantee and logistical technical services for your orders.
5. Replacement within 30 days after the shipment of products from us due to products' problems.
6. We have long cooperation with many shipping companies and our export volume is large. The shipping companies can offer us good discounts.
7. All goods will be inspected and tested before shipment.
8. Customer's satisfactory is most important to us. If you have any problem or questions regarding our transaction. Please contact us by Email. It will be responded within 24 hours.

## 7. Why Choose Us ?

The high quality products enable it to build a long-term relationship with world-famous enterprises in the industries

- (1) Competitive Price  
Own-owned factories offer lower prices and better quality assurance.
- (2) Strong Technical Strength

We are a top supplier specializing in the production of color LCD screens. We have a technical team with rich experience in product research and development, and can provide customers with professional technical support and customized consulting services at any time, which is very important for cooperative customers with special project needs.

(3) Long-term Partner

Products are sold to more than 40 countries, so from Chenghao Optoelectronic you can get more stable supplying promise;

(4) Professional Service

We have a professional after-sales team that can provide you with after-sales consulting services 24 hours a day. At the same time, if you encounter any problems in the process of using our products, you can give us feedback, and our technical engineers will provide you with online remote consulting services at any time.

(5) Quality to be ensure

All panels are 100% brand new, without false panels; All packages have labels and serial numbers for easy viewing by customers;

## 8. FAQ

**1. What is your delivery method?**

Re: DHL , UPS , FedEx ,TNT

**2. What's your products condition?**

Re: Brand New,Original Package.

**3. What is your guarantee time?**

Re: 1 year.

**4. What payment term do you accept?**

Re: T/T,PAYPAL etc.

**5. What's the certification your products get?**

Re: Rohs Compliant.

**6. How long can you supply the industrial grade products?**

Re: at least 3-5 years.

**7. What's your MOQ of your products?**

Re: 1pcs.



**Shenzhen ChengHao Optoelectronic Co., Ltd.**



+86 755-27806536



add@chenghaolcm.com



chenghaolcd.com

7th floor, building C5, Hengfeng Industrial City, Hangcheng street, Bao'an District, Shenzhen