



2.31" High Brightness 500nits LCD Display Module ILI9342C Driver IC

Our Product Introduction

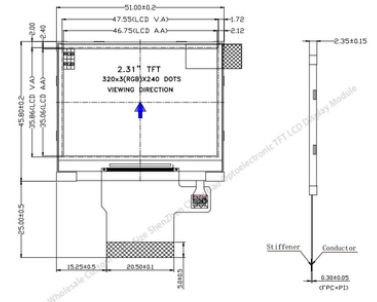
Basic Information

- Place of Origin: ShenZhen , China
- Brand Name: OEM
- Certification: ROHS ISO9001 CE
- Model Number: CH231QV07A
- Minimum Order Quantity: 100 pcs
- Price: /
- Packaging Details: All the products are packed in right way to keep it safe. For small sizes of products we use tray + carton, For bigger sizes we use foam slot + carton. we also design packages according to customers' requirements
- Delivery Time: 7 - 15 working days
- Payment Terms: T/T
- Supply Ability: 200K PCS / Month

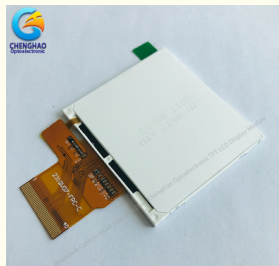
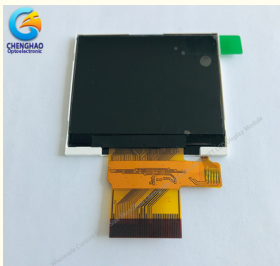


Product Specification

- Product Name: Small Lcd Display Screen
- Model Size (W*H*T)mm: 51.0*45.8*2.35
- Display Area (W*H)mm: 46.752*35.064
- Color: 65k/262k
- Pin Number: 36
- Display Mode: Transmissive /Normally White/TN
- Viewing: 6:00
- Connection: Soldering
- Highlight: 500nits LCD Display Module,
ILI9342C LCD Display Module,
500nits High Brightness LCD Module



More Images



Product Description

2.31" High Brightness 500nits LCD Display Module ILI9342C Driver IC

1. Specification of LCD Screen Module

ITEM	STANDARD VALUES	UNITS
LCD type	2.31" Tft	--
Dot arrangement	320(RGB)*240	dots
Color filter array	RGB vertical stripe	--
Display mode	TN/Transmission/Normally White	--
Viewing Direction	6 O'clock	--
Driver IC	ILI9342C	--
Module size	51.0*45.8*2.35	mm

2. Description of LCD Screen Module

- * CH231QV07A is a Transmissive type color active matrix liquid crystal display (LCD).
- * It is composed of a TFT LCD panel, driver IC, FPC, backlight, RTP.
- * It is 320(RGB)x240 resolution TFT LCD module.
- * Backlight with different brightness options from 200 - 1500cd/m2 are available.
- * Specific touch panel can be designed & customized.
- * RoHS & REACH compliant.
- * If you can't find a suitable one, contact us to get a recommendation.

3. Features of LCD Screen Module

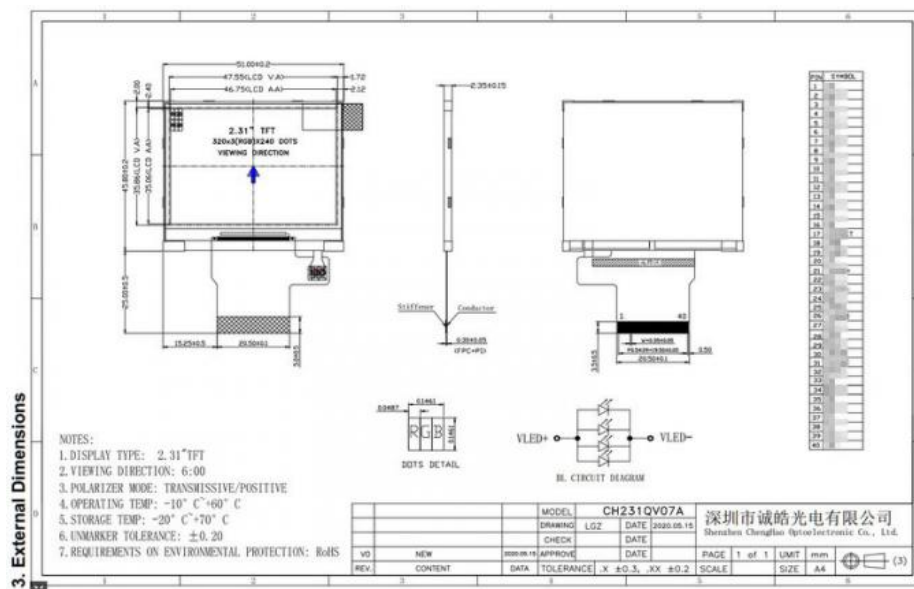
- * Interface:
3-Line SPI + 6Bit Serial RGB (Optional)
Can be designed as customer's requirements.(Including FPC shape and size can be customized)
- * BLU:
4 LED (4*LED in parallel) IBL= 80mA, VBL= 3.2 V;
Can be designed as requirements.
- * LCM outline dimension:
51.0(H)*45.8(V)*2.35(T) mm
Can be customized as requirements.
- * Touch Panel
This model does not have a touch panel, touch panel can be customized as requirements.
- * Temperature
Working : -10~60
Storing: -20~70
- * Weight : TBD g

We also have several other MP products with similar configurations, but **with different** capacitive & touch screen & interface & pin map & FPC shape & outline dimension & brightness & thickness etc.
Please contact us to provide datasheet for your checking.

4. Drawings of LCD Screen Module

Notes:

- (1) Display Type : 2.31" TFT
- (2) Viewing Direction : 6:00
- (3) Lcd Drive IC : ILI9342C
- (4) Polarizer Mode : Transmissive/Positive
- (5) Operating Temp : -20~70 °C
- (6) Storage Temp : -30~80 °C
- (7) Unmarker Tolerance: ±0.20
- (8) Protection : ROHS



5. Application of LCD Screen Module

2.31 inch Color Lcd monitor module, widely used in medical, communication, instruments and other Application.



6. Our Service

1. We provide one-year product after-sales guarantee service to all customers who purchase our products.
2. For any technical problems encountered by customers in the process of testing or using our products, our technical team will provide customers with remote online technical support services at any time.
3. We are a factory-type supplier with ISO certification. Our products on sale have undergone strict quality inspection and testing before shipment, and have also passed CE/ROHS certification.
4. We have a professional after-sales service team, which can provide strong guarantee and logistical technical services for your orders.
5. Replacement within 30 days after the shipment of products from us due to products' problems.
6. We have long cooperation with many shipping companies and our export volume is large. The shipping companies can offer us good discounts.
7. All goods will be inspected and tested before shipment.
8. Customer's satisfactory is most important to us. If you have any problem or questions regarding our transaction. Please contact us by Email. It will be responded within 24 hours.

7. Why Choose Us ?

1. We have a professional technical team with rich TFT-LCD work experience.
2. We have many years of experience in global customer cooperation, and we have the ability to solve the needs of most customers' personalized customized products.
3. We have advanced tft-lcd production equipment and a first-class production team, which can provide customers with high-quality products.
4. We are equipped with a professional after-sales service team, which can provide customers with a full range of after-sales services.
5. We provide a full range of products and services, including display screens and touch screens, Technical support and customization.

6. We manage strictly in accordance with the ISO9001 management system, and our products conform to Rosh Certification.

8. FAQ

1. What is your delivery method?

Re: DHL , UPS , FedEx ,TNT

2. What's your products condition?

Re: Brand New,Original Package.

3. What is your guarantee time?

Re: 1 year

4. What payment term do you accept?

Re: T/T,PAYPAL etc.

5. What's the certification your products get?

Re: Rohs Compliant.

6. How long can you supply the industrial grade products?

Re: at least 3-5 years.

7. What's your MOQ of your products?

Re: 1pcs.



Shenzhen ChengHao Optoelectronic Co., Ltd.



+86 755-27806536



add@chenghaolcm.com



chenghaolcd.com

7th floor, building C5, Hengfeng Industrial City, Hangcheng street, Bao'an District, Shenzhen