



## 2.31 Inch Custom LCD Module 320\*240 TFT Display Transmissive mode

### Basic Information

- Place of Origin: ShenZhen , China
- Brand Name: OEM
- Certification: ROHS ISO9001 CE
- Model Number: CH231QV07A
- Minimum Order Quantity: 100 pcs
- Price: /
- Packaging Details: All the products are packed in right way to keep it safe. For small sizes of products we use tray + carton, For bigger sizes we use foam slot + carton. we also design packages according to customers' requirements
- Delivery Time: 7 - 15 working days
- Payment Terms: T/T
- Supply Ability: 200K PCS / Month

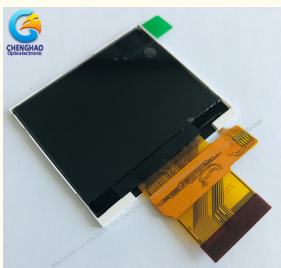


### Product Specification

- Product Name: Lcd Screen Module
- Module Type: 2.31"TFT
- Display Mode: TN/Transmissive/Normally White
- Number Of Dots: 320\*3(RGB)\*240
- Viewing Direction: 6 O'clock
- Module Size: 51.0(W)\*45.8(H)\*2.35(T)mm
- TFT Active Area: 46.752(W)\*35.064(H)mm
- Interface: SPI + RGB
- Luminance: 500cd/m2
- Highlight: 2.31 Inch Custom LCD Module, ILI9342C Custom LCD Module, ILI9342C Custom TFT Display



### More Images



## Product Description

### 2.31 Inch Custom LCD Module 320\*240 TFT Display Transmissive Mode

#### 1. Specification of LCD Screen Module

MODEL NO.	CH231QV07A
Module type	2.31" TFT
Display Mode	TN/Transmissive/Normally white
Number of Dots	320*3(RGB)*240
Viewing Direction	6 o'clock
Module size	51.0(W)*45.8(H)*2.35(T)mm
TFT Active area	46.752(W)*35.064(H)mm
Interface	SPI + RGB
Luminance	500cd/m2

#### 2. Features of LCD Screen Module

\* Interface:

3-Line SPI + 6Bit Serial RGB (Optional)

Can be designed as customer's requirements.(Including FPC shape and size can be customized)

\* BLU:

4 LED (4\*LED in parallel) IBL= 80mA, VBL= 3.2 V;

Can be designed as requirements.

\* LCM outline dimension:

51.0(H)\*45.8(V)\*22.35(T) mm

Can be customized as requirements.

\* Touch Panel

This model does not have a touch panel, touch panel can be customized as requirements.

We also have several other MP products with similar configurations,

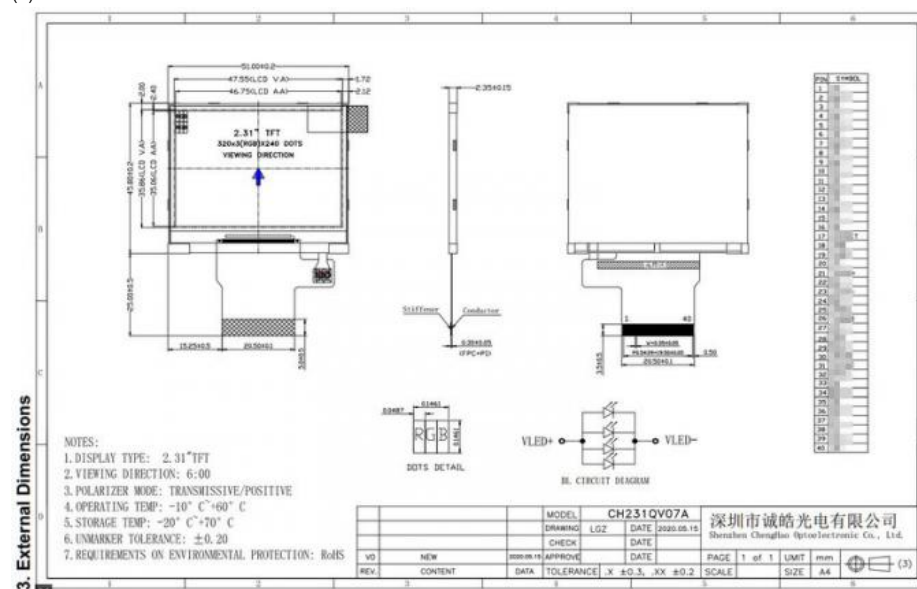
but **with different** capacitive & touch screen & interface & pin map & FPC shape & outline dimension & brightness & thickness etc.

Please contact us to provide datasheet for your checking.

#### 3. Drawings of LCD Screen Module

Notes:

- (1) Display Type : 2.31" TFT
- (2) Viewing Direction : 6:00
- (3) Lcd Drive IC : ILI9342C
- (4) Polarizer Mode : Transmissive/Positive
- (5) Operating Temp : -20~70 °C
- (6) Storage Temp : -30~80 °C
- (7) Unmarker Tolerance:  $\pm 0.20$
- (8) Protection : ROHS



#### 4. Application of LCD Screen Module

2.31 inch Color Lcd monitor module,widely used in medical,communication,instruments and other Application.



#### 5. Our Service

1. We provide one-year product after-sales guarantee service to all customers who purchase our products.
2. For any technical problems encountered by customers in the process of testing or using our products, our technical team will provide customers with remote online technical support services at any time.
3. We are a factory-type supplier with ISO certification. Our products on sale have undergone strict quality inspection and testing before shipment, and have also passed CE/ROHS certification.
4. We have a professional after-sales service team, which can provide strong guarantee and logistical technical services for your orders.
5. Replacement within 30 days after the shipment of products from us due to products' problems.
6. We have long cooperation with many shipping companies and our export volume is large. The shipping companies can offer us good discounts.
7. All goods will be inspected and tested before shipment.
8. Customer's satisfactory is most important to us. If you have any problem or questions regarding our transaction, please contact us by Email. It will be responded within 24 hours.

#### 6. Why Choose Us ?

1. We have a professional technical team with rich TFT-LCD work experience.
2. We have many years of experience in global customer cooperation, and we have the ability to solve the needs of most customers' personalized customized products.
3. We have advanced tft-lcd production equipment and a first-class production team, which can provide customers with high-quality products.
4. We are equipped with a professional after-sales service team, which can provide customers with a full range of after-sales services.
5. We provide a full range of products and services, including display screens and touch screens, Technical support and customization.
6. We manage strictly in accordance with the ISO9001 management system, and our products conform to Rosh Certification.

#### 7. FAQ

##### Q: How long is your warranty time?

A: In general, our warranty time is one year (counting from the date when we ship the products). We guarantee the quality of our products to be free from manufacturing defects. We will support you and fix all the problems (except from man-made defaults and irresistible factors).

##### Q: What is your MOQ?

A: Our MOQ is 1 piece.

**Q: Do you have data sheets?**

A: Yes, we have data sheets of our LCD modules. You may ask our sales for help.

**Q: Do you have LCD modules in stock?**

A: We don't have products in stock now. But we may prepare some later on, please feel free to ask our staff to check.

**Q: How can I know which size is suitable for our application?**

A: Please ask your engineer for guidance to make sure the size of your product(length\*width\*thickness in mm) and the function of it. Based on the above information, we will suggest the ideal size of the LCD module for your product.

**Q: How to choose a suitable model of LCD display for a new project?**

A: Think about the following key points to define a model you need, such as size/resolution/thickness/LCD interface/view angle/brightness/operation temperature and so on.

**Q: When I get the LCD display sample, how can I tell its performance meets up with our standard or not?**

A: You can ask us for a demo board, if possible, and check by yourself. If you need any guidance, we are willing to help.

**Q: What is the normal payment terms?**

A: For samples and small-quantity orders, we recommend 100% payment in advance. As for mass orders, we require 30% in advance, and balance before our delivery.

**Q: What is the normal lead time?**

A: If we still have samples in stock, delivery can be made within one week. If not, it generally takes about one month to manufacture the samples. Please confirm with us to check.



**Shenzhen ChengHao Optoelectronic Co., Ltd.**



+86 755-27806536



add@chenghaolcm.com



chenghaolcd.com

7th floor, building C5, Hengfeng Industrial City, Hangcheng street, Bao'an District, Shenzhen