



1.54 Inch Mini LCD Display 240*240 4 Line SPI TFT Display Module

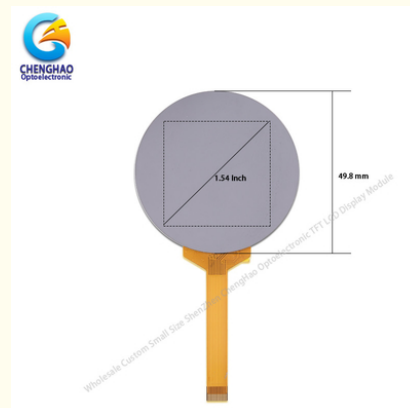
Basic Information

- Place of Origin: ShenZhen , China
- Brand Name: OEM
- Certification: ROHS ISO9001 CE
- Model Number: CH154QV09A-LS
- Minimum Order Quantity: 100 pcs
- Price: /
- Packaging Details: All the products are packed in right way to keep it safe. For small sizes of products we use tray + carton, For bigger sizes we use foam slot + carton. we also design packages according to customers' requirements
- Delivery Time: 7 - 15 working days
- Payment Terms: T/T
- Supply Ability: 200K PCS / Month



Product Specification

- Product Name: Mini Display LCD
- Size Inch: 1.54"
- Model Size (W*H*T)mm: $\phi 49.8 \times 3.52$
- Display Area (W*H)mm: 27.72*27.72
- Color: 65k/262k
- Display Mode: Normally Black IPS, Transmissive
- Viewing: Free Viewing Angle
- Highlight: 1.54 Inch Mini LCD Display ,
262k Mini LCD Display ,
1.54 Inch TFT Display Module



More Images



Product Description

1.54 Inch Mini LCD Display 240*240 4 Line SPI TFT Display Module

1. Specification of Mini Display Lcd

Size Inch	1.54 inch
Model Name	CH154QV09A-LS
Resolution	240*(RGB)*240
Model Size (W*H*T)mm	φ49.8*3.52
Display Area (W*H)mm	27.72*27.72
Color	65k/262k
Display Mode	Normally Black IPS, Transmissive
Viewing	ALL
Connection	Connector
Pin number	12
Interface	4line SPI

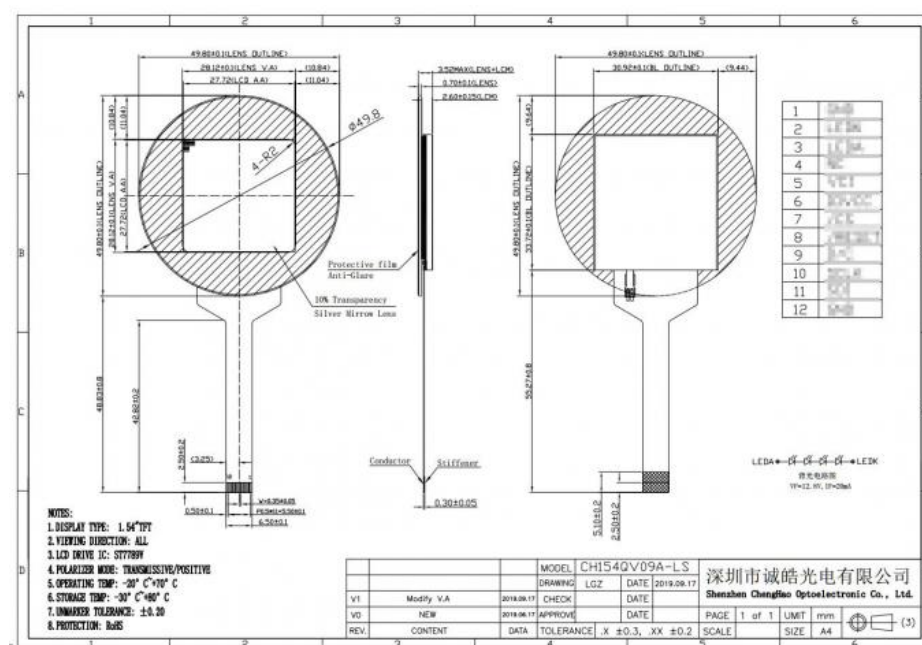
2. Description of Min Display Lcd

- * 1.54-inch color screen display
- * 240*240 resolution, clear display
- * Using SPI Interface
- * Provide a rich sample program
- * Military-grade process standards, long-term stable work
- * Provide underlying driver technical support
- * Long term stable production and guaranteed supply
- * Support customized service! Customizable content includes FPC/backlight brightness/installation of touch panel, etc.

3. Drawings of Mini Display Lcd

Notes:

- (1) Display Type : 1.54" TFT
- (2) Viewing Direction : ALL
- (3) Lcd Drive IC : ST7789V
- (4) Polarizer Mode : Transmissive/Positive
- (5) Operating Temp : -20~70 °C
- (6) Storage Temp : -30~80 °C
- (7) Unmarker Tolerance: ±0.20
- (8) Protection : ROHS



4. Application of Mini Display Lcd

a wide range of industrial, instrument, medical, electronic equipment and other fields.



5. Our Service

1. We provide one-year product after-sales guarantee service to all customers who purchase our products.
2. For any technical problems encountered by customers in the process of testing or using our products, our technical team will provide customers with remote online technical support services at any time.
3. We are a factory-type supplier with ISO certification. Our products on sale have undergone strict quality inspection and testing before shipment, and have also passed CE/ROHS certification.
4. We have a professional after-sales service team, which can provide strong guarantee and logistical technical services for your orders.

6. Why Choose Us ?

1. We have a professional technical team with rich TFT-LCD work experience.
2. We have many years of experience in global customer cooperation, and we have the ability to solve the needs of most customers' personalized customized products.
3. We have advanced tft-lcd production equipment and a first-class production team, which can provide customers with high-quality products.
4. We are equipped with a professional after-sales service team, which can provide customers with a full range of after-sales services.
5. We provide a full range of products and services, including display screens and touch screens, Technical support and customization.
6. We manage strictly in accordance with the ISO9001 management system, and our products conform to Rosh Certification.

7. FAQ

Q1. What is the MOQ?

Re: No MOQ for standard products, different MOQ requirements for customization.

Q2. What about the leading time?

Re: For standard product, within 1 week for samples, 3-4 weeks for bulk order;
For customization, 2-3 weeks for samples, 4 weeks for mass production after sample confirmation.

Q3. Is there any warranty for your products?

Re: Yes, we offer 12-months warranty for unartificial defect.

Q4. What is your shipping method?

Re: We can ship as buyer's requirements, our suggestions:
For small quantity, ship by DHL/Fedex/TNT/EMS Express service, delivery time: 4-6 business days;
For large quantity, ship by sea transportation or air transportation for saving shipping charge.

Q5. What is your payment method?

Re: We support make payment via TT/West Union/Paypal,50%-100% deposit in advance and balance before shipping as order amount.

Q6. Do you offer customization service?

Re: Yes,welcome OEM&ODM,please send us your requirements for assessment.

Q7. How to control the quality of products?

A: Toppop owns professional quality control team,100% inspection before shipment.

Q8. Can you provide product drawings and test reports?

A: According to customer's requirements,Toppop can offer technical documents and test reports.



Shenzhen ChengHao Optoelectronic Co., Ltd.



+86 755-27806536



add@chenghaolcm.com



chenghaolcd.com

7th floor, building C5, Hengfeng Industrial City, Hangcheng street, Bao'an District, Shenzhen